

# Statistics on local government productivity 2008

## Productivity of municipalities and joint municipal boards developed positively in 2008

1 July 2010

*An error has been detected in data concerning 2008 in the statistics on local government productivity. The error relates to the change in the output volume of health care and it also affects the figure on the total productivity of health care as well as data at the activities total level. Corrected data will be released on 15 July 2010.*

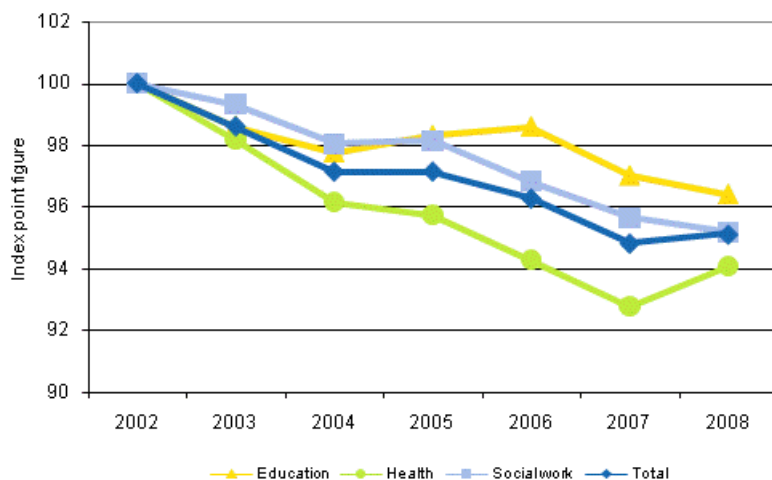
According to revised data of Statistics Finland's statistics on local government productivity, the combined total productivity of education, health care and social work of local government improved by 0.3 per cent in 2008. Productivity improved because the volume of output grew by more than the volume of total input. The volume of output grew by 2.8 per cent, while the volume of total input grew by 2.5 per cent.

### Volume changes in the output and total input and changes in total productivity of local government by industry in 2008, per cent from the year before

2008	Education	Health	Social work	Total
Output	-1.4	5.3	3.7	2.8
Total input	-0.7	3.9	4.2	2.5
Total productivity	-0.6	1.4	-0.5	0.3

Productivity improved in health care but fell in education and social work in 2008. In education, total input decreased by 0.7 per cent but because output diminished by more than this, productivity weakened by some 0.5 per cent. Productivity also weakened by approximately 0.5 per cent in social work, as total input grew by over four per cent but output by under four per cent. In health care, total input grew by nearly four per cent but a growth of up to 5.3 per cent in output put productivity into the positive by around 1.5 per cent.

**Development in the total productivity of education, health and social work of local government in 2002–2008 (2002=100)**



Between 2002 and 2008, the combined productivity of local government fell by some five per cent. In education total productivity fell by four per cent, in social work by five per cent and in health care by six per cent.

The entire 2001-2008 time series of these statistics on local government productivity has become slightly revised in this release due to the revision of the time series of national accounts published on 29 January 2010. The statistics are compiled at the level of the whole country and the data are not available by municipality or joint municipal board.

# Contents

## Tables

### Appendix tables

Volume changes in the output and total input and changes in total productivity of local government by industry in 2001–2008.....4

## Appendix tables

### Volume changes in the output and total input and changes in total productivity of local government by industry in 2001–2008

		2001	2002	2003	2004	2005	2006	2007	2008
Education	Output	0.1	0.7	0.3	0.5	0.1	-0.1	-0.9	-1.4
	Total input	1.6	2.3	1.7	1.3	-0.4	-0.4	0.7	-0.7
	Total productivity	-1.5	-1.6	-1.4	-0.9	0.6	0.3	-1.6	-0.6
Health	Output	0.3	0.5	1.1	3.5	4.3	0.1	0.9	5.3
	Total input	3.8	3.5	3.0	5.7	4.8	1.7	2.6	3.9
	Total productivity	-3.4	-2.9	-1.8	-2.1	-0.5	-1.5	-1.6	1.4
Social work	Output	-1.6	1.0	0.1	0.0	1.7	1.2	0.6	3.7
	Total input	3.9	2.9	0.8	1.3	1.6	2.6	1.8	4.2
	Total productivity	-5.3	-1.8	-0.7	-1.3	0.1	-1.3	-1.2	-0.5
Total	Output	-0.2	0.7	0.6	1.6	2.3	0.3	0.3	2.8
	Total input	3.1	2.9	2.0	3.2	2.3	1.2	1.8	2.5
	Total productivity	-3.2	-2.2	-1.4	-1.5	0.0	-0.9	-1.5	0.3

---

Suomen virallinen tilasto  
Finlands officiella statistik  
Official Statistics of Finland

Government Finance 2010

### Inquiries

Niina Suutarinen (09) 1734 3302  
Director in charge:  
Ari Tyrkkö  
[julkinen.tuottavuustilasto@stat.fi](mailto:julkinen.tuottavuustilasto@stat.fi)  
[http://www.stat.fi/til/kktu/index\\_en.html](http://www.stat.fi/til/kktu/index_en.html)