

Glossary of Geospatial Information in Statistics

Translation of the Finnish Glossary



**Funded by
the European Union**

Publisher: Statistics Finland
© Statistics Finland 2026

ISBN 978–952–244–729–6 (PDF, Statistics
Finland)

Statistics Finland
FI-00022 Statistics Finland
info(at)stat.fi
stat.fi

Finnish Terminology Centre
Runeberginkatu 4c B 20
FI-00100 Helsinki
toimisto(at)sanastokeskus.fi
sanastokeskus.fi

Contents

Contents	3
Preface	4
Structure and notations of the glossary	5
Concepts, definitions and terms	5
Structure of the glossary	5
Term record structure	5
Interpreting the concept diagrams	7
1 Basic concepts of location and geospatial information	9
2 Area concepts used in statistics	15
3 Statistical concepts	19
English index	21
Finnish index	22

Preface

This document is a translation of the Finnish glossary. The document is therefore not the result of English terminology work. The correctness of the terms and their definitions in English can only be guaranteed by doing the entire terminology work in English. This document may serve as a starting point for terminology work, but as such is not suitable for English glossary.

In the autumn of 2023, Statistics Finland and the Finnish Terminology Centre launched terminology work in support of the project GSGF in Finland – Integration of geospatial and statistical information in Finland (GSFI). The aim of the GSFI project is to gain common understanding of the state of integration of statistical and geospatial information in Finland and how it should be developed in our country. The glossary work supports the GSFI project by defining key statistical and geospatial information concepts and by clarifying the use of terms.

The Glossary of Geospatial Information in Statistics resulting from the glossary project presents the details of 31 statistical and geospatial information concepts as term records and concept diagrams. The content of the concepts is described with definitions and supplementary information. The glossary gives the recommended Finnish terms and English equivalents for each of them. Relationships between the concepts are illustrated with concept diagrams.

The glossary is designed to support cooperation between statistical and geospatial information experts. We also hope that the glossary will be of use for data producers and users in Finland and enhance data interoperability. More generally, we hope that in addition to statistical and geospatial information experts, the glossary will also meet the needs of such groups as information system developers, communicators, journalists and translators.

The [fourth edition of the Vocabulary of Geoinformatics \(TSK 45\)](#), published in 2018, has been used in the compilation of the glossary.

The following experts participated in the work of the working groups that prepared the glossary:

Paula Ahonen-Rainio, National Land Survey of Finland (NLS)

Nicola Brun, Statistics Finland

Ville Helminen, Finnish Environment Institute (Syke)

Eetu Jutila, Finnish Environment Institute (Syke)

Tesmi Laakso, Statistics Finland

Tarja Myllymäki, National Land Survey of Finland (NLS)

Tommi Mäkivaara, Statistics Finland

Kimmo Nurmio, Finnish Environment Institute (Syke)

Antti Santaharju, Statistics Finland

Rina Tammisto, Statistics Finland

Sirpa Suhonen, terminologist, Finnish Terminology Centre.

The funding for the terminological work required for the compilation of the glossary was provided by Statistics Finland with EU Grant funding (101112903-2022-EN-GEOS-GSFI).

During the glossary project, information and comments were requested from experts outside the working groups. We would like to thank the members of the glossary working groups and other actors participating in the compilation of the glossary for their valuable input.

Structure and notations of the glossary

Concepts, definitions and terms

The aim of the glossary work was to produce reliable definitions, concept systems, term recommendations and English-language equivalents for the terms. The glossary was therefore prepared systematically and in accordance with the terminological principles and methods defined in the international standards prepared by ISO/TC 37 (International Organization for Standardization/Technical Committee 37 Language and Terminology).

Terminological glossary work is characterised by conceptual focus. Whereas in dictionaries, the focus is on words and their meanings, the focus in terminological glossaries is on concepts and their relationships.

Concepts are thought models created by human mind that correspond to real-world features (objects). **Objects** have a variety of different attributes. The thought models based on these attributes are called characteristics. The content of a concept consists of a set of different characteristics and a **definition** is used to describe the essential and delimiting characteristics. Terminological definitions are described so that they can be used to identify the place of each concept in the concept system. **Terms** are designations of concepts that can be used to refer briefly to the content of the concept.

Structure of the glossary

The glossary is grouped into **thematically** structured chapters, in which related concepts are placed close to each other.

Alphabetical indexes can be found at the end of the glossary. The numbering used in them refers to the concept number in the glossary. In addition to the recommended and rejected terms, the indexes list other search terms that are closely related to a specific concept. Other search terms refer to the concept described in connection with the term in question and its number.

Term record structure

The concepts are presented as numbered term records and, as a rule, as diagrams describing the concept systems. Term records and concept diagrams are intended to be mutually supportive presentations.

In the term record, a concept is first described with **terms**. The terms of the main language of the glossary (the language used as the basis for the concept analysis) are presented first. As a rule, the terms are followed by a **definition**. The definition starts with a lowercase letter and does not end with a full stop. Any additional information supplementing the definition (**notes**) is separated from the definition by indentation. The notes are presented as ordinary sentences. They can provide examples, additional information about the concept or information about the use of the terms.

A summary of the notations used in the glossary section in connection with the concepts:

Term record notation	Explanation of the notation
1	concept number; the concepts presented in the glossary are numbered sequentially
bolding	English terms: the recommended term is shown first, followed by permitted synonyms
<i>italicised link</i>	(in definition or note) an italicised term refers to a concept defined in the glossary; the term acts as a link in the electronic version
non-italicised link	(in definition or note) the text acts as a link to a feature outside the glossary, such as a regulation or a concept used in another glossary
(1)	(number in brackets after the term) homonym; there are several terms in the glossary with identical spelling but a different meaning, such as spatial object (1) and spatial object (2)
not:	rejected term; it has a different meaning than the recommended term and should not be used in this meaning. The term may also be outdated or violates the rules of the language
fi	Finnish-language equivalents
<	the term refers to a concept that is broader than the defined concept
Concept diagram:	a reference to one or more concept diagram in which the concept appears; the name of the diagram acts as a link in the electronic version

Interpreting the concept diagrams


The concept diagrams illustrate the relationships between concepts and help understand sets of concepts. The terminological conceptual relationships found in the glossary are described with UML (Unified Modeling Language) notations (see ISO 24156-1 Graphic notations for concept modelling in terminology work and its relationship with UML – Part 1: Guidelines for using UML notation in terminology work). Not all conceptual relationships listed below necessarily appear in this glossary. Examples of describing conceptual relationships are given in the diagram on the next page.

Entering a **concept** in the concept diagram

- the first recommended term and definition have been picked for the diagram from the details of the concept described in the glossary section
- the non-bold term appears in the diagram to facilitate the interpretation of the diagram, but it is not defined in the glossary

 **Hierarchical relationship** (line ending in triangle)

- exists between a broader concept (*areal division*) and a narrower concept (*municipality-based division* and *sub-division*)
- the narrower concept contains all the characteristics of the broader concept, as well as at least one additional characteristic. However, the corresponding group of objects is narrower than the broader concept
- the narrower concept can be considered a special case of the broader concept
- the tip of the triangle points to the broader concept

 **Partitive relationship** (line ending in diamond)

- narrower concepts are parts of the broader concept
- the characteristics of the broader concept are not included in the narrower concept in the same manner as in the hierarchical concept system
- for example, a *geographic data set* consists of *geospatial information*
- the diamond is attached to the broader concept

Associative relationship (line without a symbol)

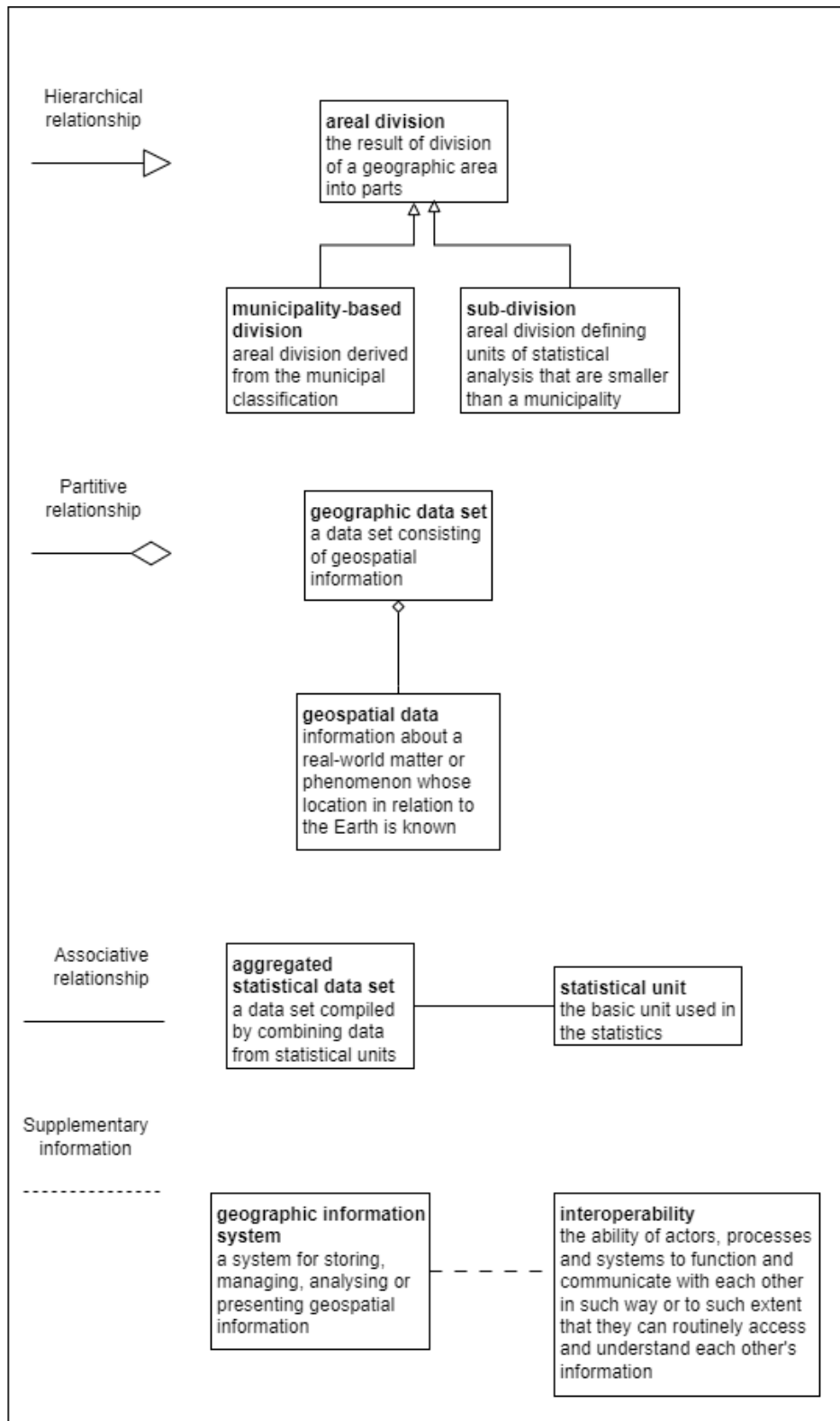
- a conceptual relationship that cannot be classified as a hierarchical or partitive relationship (for example, temporal, spatial, functional, instrumental and origin-related relationships)
- the type of associative relationship is usually evident from the linguistic form of the definition
- for example, there is an associative relationship between a *statistical unit* and an *aggregated statistical data set*: the data have been compiled by combining data contained in the statistical units

Multidimensional concept system (line with a text indicating the breakdown criterion)

- the broader concept can be used as a basis for narrower concepts of different scope (dimensions) by using a variety of different breakdown criteria
- in a hierarchy, narrower concepts belonging to one dimension (narrower concepts based on a single breakdown criterion, which are marked under the same breakdown criterion in the concept diagram) cannot be combined into a new concept. However, narrower concepts belonging to different dimensions (narrower concepts under different breakdown criteria) can be combined into new concepts (for example, an *administrative area* can be a *statistical area*)
- dimensions related to a partitive relationship can be used to present different ways of outlining the structure of the broader concept
- the designation of the breakdown criterion often appears on the line
- see [Concept diagram 2. Area](#), p. 19

Supplementary information (dashed line - - -)

- dashed lines denote conceptual relationships that are not evident from the wording of the definitions (for example, the associative relationships between the concepts *geographic information system* and *interoperability* is indicated with a dashed line because the definition of the geographic information system does not refer directly to interoperability and vice versa)
- the conceptual relationships indicated with dashed lines complement the definitions and support the understanding of the concepts
- the dashed line can denote a hierarchical relationship, a partitive relationship and an associative relationship



1 Basic concepts of location and geospatial information

1

location; position

fi sijainti

definition

a place where something expressed with a unique system is located

note

A unique system can be a *coordinate reference system* (see *direct position*) or an address or other locating system (see *indirect position*).

In geoinformatics, location means a geographic location or a place where something is located as expressed by means of a unique system in relation to the Earth.

In the ISO 19100 series of standards, the term position refers to the type of data indicating a location and the term location refers to a geographic place.

The concept corresponds to the concept of location described in [the 4th edition of the Vocabulary of Geoinformatics \(TSK 51, 2018\)](#).

Concept diagram: [Location data and geospatial information](#)

2

direct position

fi suora sijainti; koordinaattitieto

definition

a *location* expressed with the *coordinate reference system* and its *coordinates*

note

The term coordinate information is often used in communication.

The concept corresponds to the concept of direct position described in [the 4th edition of the Vocabulary of Geoinformatics \(TSK 51, 2018\)](#).

Concept diagram: [Location data and geospatial information](#)

3

indirect position

fi epäsuora sijainti

definition

a *position* expressed by means other than the *coordinate reference system*

note

For example, an indirect position can be described with an address, locating ID, linear referencing, lattice structure or other unique system.

For example, a lattice structure can mean *areal division* or an atlas grid.

The concept corresponds to the concept of indirect position described in [the 4th edition of the Vocabulary of Geoinformatics \(TSK 51, 2018\)](#).

Concept diagram: [Location data and geospatial information](#)

4

geocoding

fi geokoodaus

definition

conversion of *an indirect position* into *a direct position*

note

In reverse geocoding, a direct position is converted into an indirect position; for example, *coordinates* are converted into an address. Using reverse geocoding, the closest features can be located with the given coordinates.

The concept corresponds to the concept of geocoding described in [the 4th edition of the Vocabulary of Geoinformatics \(TSK 51, 2018\)](#).

Concept diagram: [Location data and geospatial information](#)

5

location data; location information

fi sijaintitieto

definition

information about the *location* of a feature

note

For example, location data can be described with *coordinates* or an address or by referring to a feature with known coordinates. Examples include place names and names of areas. For example, location data can indicate the location of a particular building with coordinates or an address. Cf. *geospatial information*.

Concept diagrams: [Location data and geospatial information](#) and [Set of statistics](#)

6

geospatial reference information

fi sijaintiviitetieto

definition *location data* used in *geocoding* and obtained from a jointly agreed source

note

National-level agreement is needed on the joint use of primary sources from which the location data are obtained.

Concept diagram: [Location data and geospatial information](#)

7

geospatial data; geographic data; geospatial information; geographical information; geographic information; geoinformation; not: spatial information; spatial data

fi paikkatieto

definition

information about a real-world matter or phenomenon whose *location* in relation to the Earth is known

note

Geospatial information contains a reference to a specific place or area. Geospatial information can describe the location of a feature and such matters as thematic attributes or timing attributes. Geospatial information often describes features in the natural or built environment, but it can describe any activity or phenomenon with a known location.

Geospatial information can be obtained from data by georeferencing (by connecting location information to other data).

The Act on Geospatial Data Infrastructure ([421/2009 \(in Finnish\)](#)) applies to geospatial information in electronic format relevant to the territory of Finland. The statistics are part of the national and international *infrastructure for geospatial information*.

Geospatial information can be modelled as a feature or a coverage.

In Finnish, the concept means both data and information. Data are unprocessed or slightly processed, whereas information is something that can be interpreted. Geospatial information can also be generated by humans based on information. In its glossary, the Technical Committee 211 of the International Organization for Standardization (ISO) has separately defined the concepts 'geographic data' and 'geographic information', and in English, there are separate terms for geospatial data and geospatial information.

In English, terms with the prefix geo (such as geospatial data) indicate that the location has been determined specifically in relation to the Earth. For example, the INSPIRE Directive of the European Parliament and of the Council ([2007/2/EC](#)) and related provisions use the term spatial data and spatial information when referring to geospatial data. However, the use of these terms in geoinformatics is not generally recommended, as in geoinformatics, location is specifically determined in relation to the Earth in the vast majority of cases.

In addition to geoinformatics, the terms spatial data and spatial information are also used in such fields as neuroscience and space research. In these fields, the terms refer to a concept other than the concept of geospatial information defined in this glossary.

The concept corresponds to the concept of geospatial information described in [the 4th edition of the Vocabulary of Geoinformatics \(TSK 51, 2018\)](#).

Concept diagram: [Location data and geospatial information](#)

8

geographic information system; GISpaikkatietojärjestelmä

fi paikkatietojärjestelmä

definition

a system for storing, managing, analysing or presenting *geospatial information*

note

A geographic information system consists of hardware, software, *geographic data sets*, users and practices.

Based on their intended use, geographic information systems can be divided into event-oriented and data-management-oriented information systems and analysis-oriented support systems for decision-making.

The concept corresponds to the concept of geographic information system described in [the 4th edition of the Vocabulary of Geoinformatics \(TSK 51, 2018\)](#).

Concept diagram: [Location data and geospatial information](#)

9

geospatial information system

fi sijaintitietojärjestelmä

definition

the part of a statistical information system used to process *location data* and to make them available to other systems

note

A geospatial information system can be used to manage location data on *statistical units*.

Concept diagram: [Location data and geospatial information](#)

10

geographic feature; geospatial objectpaikkatietokohde; not: spatial object (2)

fi paikkatietokohde

definition

a feature that contains *location data*

note

A *statistical unit* is a geographic feature if it has a *location*.

Feature is defined in

<https://sanastokeskus.fi/tiedostot/pdf/GeoinformatiikanSanasto.pdf?file=pdf/GeoinformatiikanSanasto.pdf>the 4th edition of the Vocabulary of Geoinformatics (TSK 51, 2018).

Concept diagrams: [Location data and geospatial information](#) and [Set of statistics](#)

11

geographic data set; geospatial data set

fi paikkatietoaineisto

definition

a data set consisting of *geospatial information*

note

All statistical data with *location data* are geographic data sets.

In statistics, geographic data sets include municipality-based statistical areas, postal code areas, population grid data and the data describing road traffic accidents.

The concept corresponds to the concept of geographic data set described in [the 4th edition of the Vocabulary of Geoinformatics \(TSK 51, 2018\)](#).

Concept diagram: [Location data and geospatial information](#)

12

infrastructure for geospatial information; geospatial data infrastructure; spatial data infrastructure; SDI

fi paikkatietoinfrastruktuuri

definition

a structure consisting of *geographic data sets*, services supporting their use, metadata describing the data and services, agreements on the disclosure, availability and use of the information and coordination and monitoring mechanisms

note

Provisions on the Infrastructure for Spatial Information in the European Community (INSPIRE) are contained in Directive [2007/2/EC](#) of the European Parliament and of the Council.

The concept corresponds to the concept of infrastructure for geospatial information described in [the 4th edition of the Vocabulary of Geoinformatics \(TSK 51, 2018\)](#).

Concept diagram: [Location data and geospatial information](#)

13

integration of statistical and geospatial information

fi tilasto- ja paikkatietojen integrointi; paikka- ja tilastotietojen integrointi

definition

an activity in which *geospatial information* is used at different stages of statistical production

note

The UN Global Statistical Geospatial Framework (GSGF) is divided into five levels. At the first or the lowest level lies the national *infrastructure for geospatial information* to enable the linking of the *location* to data uniformly. The second level comprises the uniform linking of location data to *statistical unit* data and the uniform management of geospatial information. The third level comprises the common *areal divisions* used in the distribution of statistics. The fourth level comprises interoperable statistics and geospatial information. The fifth or the highest level comprises the accessibility and usability of *geospatially enabled statistics*.

Concept diagram: [Location data and geospatial information](#)

14

interoperability

fi yhteentoimivuus

definition

the ability of actors, processes and systems to function and communicate with each other in such a way or to such an extent that they can routinely access and understand each other's information

note

Interoperability may be of a technical, semantic, organisational or legal nature.

Concept diagram: [Location data and geospatial information](#)

15

geospatial object; spatial object (1)

fi sijaintiobjekti

definition

an object used to describe attributes related to the *location* of a feature

note

A point, a curve and a surface are geospatial objects. A point, a line and an area are the most common geospatial objects in two-dimensional space (surface).

The definition of a geospatial object is based on standard ISO 19101 Geographic information.

The concept corresponds to the concept of spatial object described in [the 4th edition of the Vocabulary of Geoinformatics \(TSK 51, 2018\)](#).

Concept diagram: [Location data and geospatial information](#)

16

coordinate

fi koordinaatisto

definition

each of the numerical values of *n* that define the *location* of a point in the selected *n*-dimensional space

note

The number of numerical values is the same as the number of axes in a *coordinate system* (in geoinformatics, coordinate systems usually have two or three axes). Coordinates are usually shown on *x*, *y* and *z* axes. The order of the axes depends on the definition of the *coordinate reference system*; for example, *x* can denote north and *y* can denote east or *x* can denote east and *y* can denote north.

The concept corresponds to the concept of coordinate described in [the 4th edition of the Vocabulary of Geoinformatics \(TSK 51, 2018\)](#).

Concept diagram: [Location data and geospatial information](#)

17

coordinate system

fi koordinaatisto

definition

a set of mathematical rules defining how points are given *coordinates*

note

A coordinate system can be understood as a set of measurement axes consisting of the coordinate axes.

A rectangular coordinate system, a plane coordinate system and a geographic coordinate system are examples of coordinate systems.

The concept corresponds to the concept of coordinate system described in [the 4th edition of the Vocabulary of Geoinformatics \(TSK 51, 2018\)](#).

Concept diagram: [Location data and geospatial information](#)

18

coordinate reference system

fi koordinaattijärjestelmä

definition

a system consisting of a *coordinate system* attached to the real world by means of a datum

note

The coordinate reference system can be used to uniquely indicate the *location* of a feature.

A datum is a parameter or set of parameters that defines the origin, scale and orientation of a coordinate system.

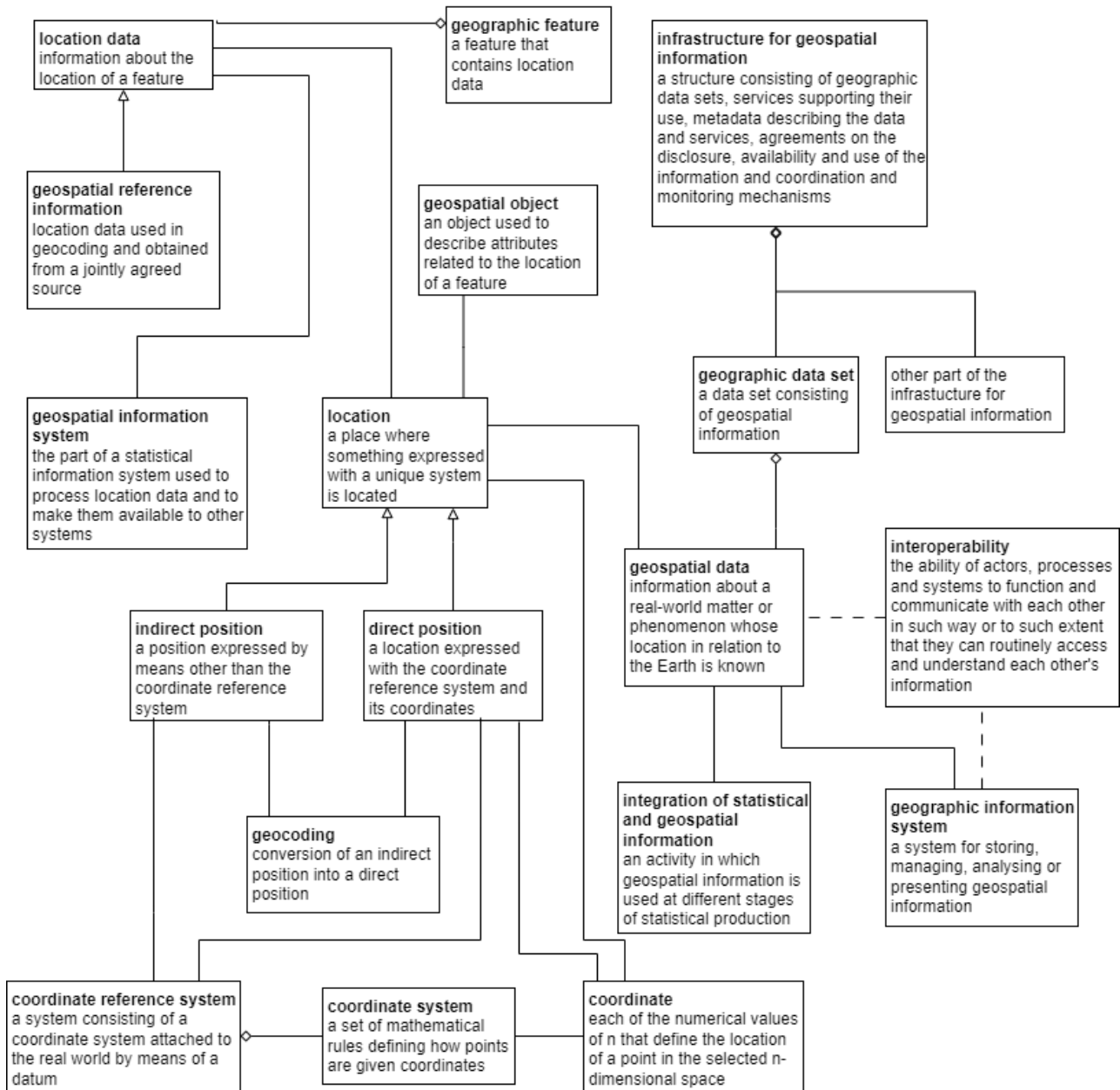
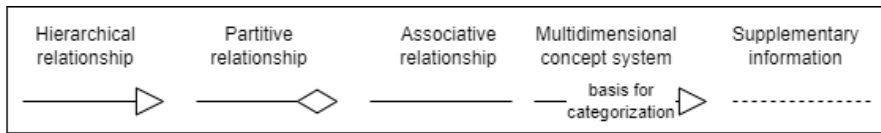
The coordinate reference system can be global, regional (used, for example in a single continent) or local (used, for example, in a single country or municipality).

According to the definition of the coordinate reference system contained in the implementing regulation of the INSPIRE Directive (Commission Regulation (EU) No [1089/2010](#) implementing Directive 2007/2/EC of the European Parliament and of the Council regarding the interoperability of spatial data sets and services), the term only refers to coordinate reference systems based on geodetic or rectangular *coordinates*, as well as to coordinate systems based on map projections.

Finland uses ETRS-TM35FIN as its national coordinate reference system and ETRS-GKn as the local-level system. Under the implementing regulation of the INSPIRE Directive, the ETRS-LAEA coordinate reference system should be used for statistical cooperation at European level. Navigation systems often use global coordinate reference systems such as WGS84.

The concept corresponds to the concept of coordinate reference system described in [the 4th edition of the Vocabulary of Geoinformatics \(TSK 51, 2018\)](#).

Concept diagram: [Location data and geospatial information](#)



Concept diagram 1. Location data and geospatial information.

2 Area concepts used in statistics

19

areal division; regional division; < spatial division

fi aluejako

definition

the result of division of a geographic area into parts

note

An area can be divided into parts based on administrative criteria (for example, administrative division based on municipal and regional division), geographic criteria (for example, geographic division based on vegetation zones) or computational criteria (for example, computational division based on [statistical grid cells](#), Voronoi areas and map sheet division).

[Location data](#) are included in the areal division.

Areal division can be based on [areal classification](#).

The areas of the areal division used in statistics are units of statistical analysis. A unit of statistical analysis means a feature to which statistical data are attached or which statistical data describe.

The English term spatial division is a broader concept than the term areal division used in Finland; the former can also be used when references are made to three-dimensional space. The use of the term regional division as the English equivalent of areal division is not recommended in the Finnish context, as the term regional division in Finland refers to regions. In other countries, the terms regional division and areal division are used interchangeably.

The concept corresponds to the concept of areal division described in [the 4th edition of the Vocabulary of Geoinformatics \(TSK 51, 2018\)](#).

Concept diagram: [Area](#)

20

municipality-based division

fi kuntapohjainen aluejako

definition

[areal division](#) derived from the municipal classification

note

In addition to municipalities, municipality-based division also refers to such concepts as regional and sub-regional divisions, which are based on municipal boundaries.

Concept diagram: [Area](#)

21

sub-division; small area division; subdivision; small-scale division

fi pienaluejako

definition

[areal division](#) defining units of statistical analysis that are smaller than a municipality

note

Sub-divisions include [administrative areas](#), such as voting districts and school districts, [statistical areas](#) or postal code areas.

Finland is in the process of creating a national system of sub-divisions and classification of sub-divisions so that nationally uniform and sufficiently accurate statistics on areas can be produced.

Concept diagram: [Area](#)

22

areal classification; regional classification

fi alueluokitus

definition

a concept created by dividing areas into groups based on specific attributes

note

The areal classifications include at least the sub-headings (the names of the classes and the codes, i.e. the numerical or alphabetical identifiers, assigned to them). Some of the areal classifications also include the descriptions of the classes.

With the aid of such codes as municipality codes, the areal classification can be combined with the [areal division](#) in effect at the same time.

Areal classifications can be produced with the aid of pre-agreed data (such as [administrative areas](#)) or divisions based on geospatial analyses (such as areal typologies).

The purpose of the areal classifications used in statistics is to describe areal changes in phenomena and the areal structure. Division into municipalities, sub-regional units and regions, as well as the statistical classification of municipalities, is the main statistical areal classification used in Finland. Other common municipality-based areal classifications used in Finnish statistics are major regions, Regional State Administrative Agencies and Centres for Economic Development, Transport and the Environment.

Concept diagram: [Area](#)

23

hierarchical areal classification; hierarchical regional classification

fi hierarkkinen alueluokitus

definition

[areal classification](#) or a set of areal classifications in which a lower-level area is part of a higher-level area and the higher-level area is divided into several lower-level areas

note

The NUTS (Nomenclature des Unités Territoriales Statistiques) classification is an example of a three-level hierarchical areal classification, which is used in the statistics sent to Eurostat, the Statistical Office of the European Union. With the classification, comparisons can be made between the statistical data produced by European countries by region.

In Finland, the NUTS 1 level refers to Mainland Finland and Åland, NUTS 2 to major regions and NUTS 3 to regions. Most of the statistics submitted to Eurostat concern NUTS 2 (major regions) and the aim is to generate all regional data at this level. Finland is divided into major regions as follows: 1) Helsinki-Uusimaa; 2) Southern Finland; 3) Western Finland; 4) Northern and Eastern Finland; and 5) Åland. Each major region consists of several smaller regions.

Concept diagram: [Area](#)

24

administrative area

fi hallinnollinen alue; not: hallintoalue

definition

an area established based on administrative criteria

note

In Finland, the INSPIRE Directive ([2007/2/EC](#)) is implemented based on the following administrative units: municipalities, wellbeing services counties, regions and Regional State Administrative Agencies. The areas under the auspices of these units are called administrative areas.

Concept diagram: [Area](#)

25

statistical areatilastollinen alue; tilastointialue

fi tilastollinen alue; tilastointialue

definition

an area defined for statistical purposes

note

In Finland, the following areas are statistical areas for the purposes of the INSPIRE Directive (2007/2/EC): municipalities, regions, wellbeing services counties, Regional State Administrative Agencies, Centres for Economic Development, Transport and the Environment, sub-regional units, major regions and constituencies. In the context of the INSPIRE Directive, these areas are referred to as units of statistical analysis.

Statistical areas can also be based on *municipality-based division*, *sub-division* or grid nets for statistics.

Concept diagram: [Area](#)

26

statistical grid cell; grid cell; statistical rectangle

fi tilastoruutu; tilastollinen ruutu

definition

rectangular *statistical area* created along coordinate axes

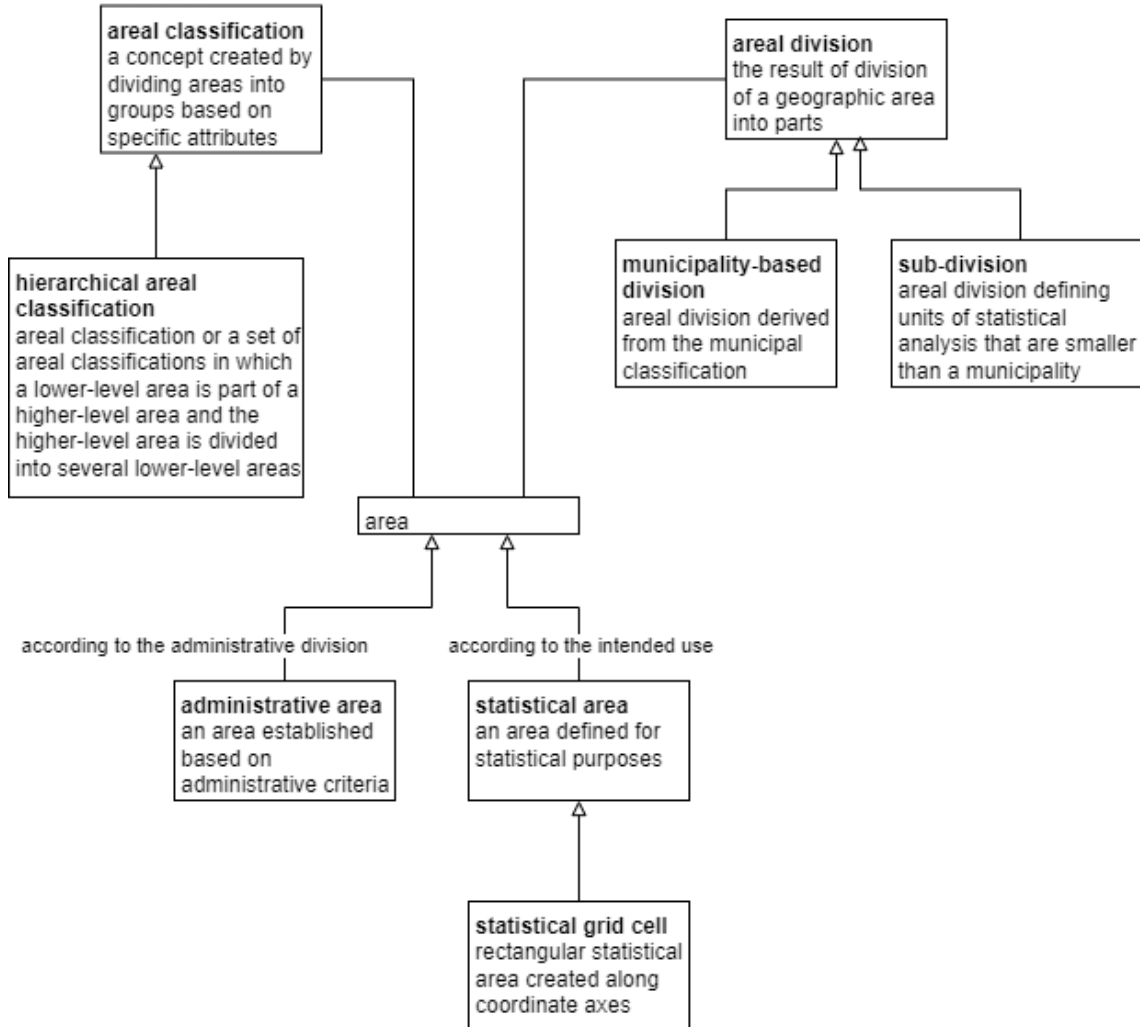
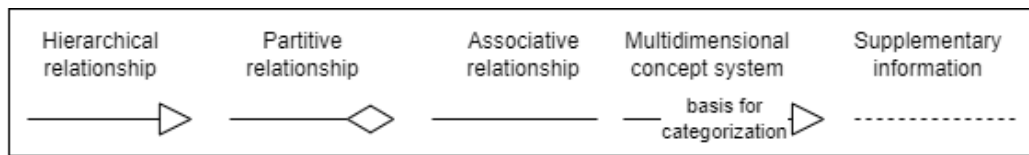
note

For example, a statistical grid cell can have a size of 250 m x 250 m or 1 km x 1 km

Each statistical grid cell has an identifier.

Statistical grid cells form a grid net for statistics (also called a statistical grid) that covers the entire territory of Finland.

Concept diagram: [Area](#)



Concept diagram 2. Area

3 Statistical concepts

27

statistical unit

fi tilastoyksikkö; not; tilastointiyksikkö

definition

the basic unit used in the compilation of statistics

note

Statistical units include a natural person, a household, a municipality and an enterprise. A statistical unit may also be an event such as a criminal offence or a traffic accident.

A statistical unit and a unit of statistical analysis are two different things. A unit of statistical analysis is a feature to which statistical data are attached or which statistical data describe. For example, areas are units of statistical analysis.

Concept diagram: [Set of statistics](#)

28

unit-based statistical data set; unit data set

fi yksikkötason tilastollinen aineisto; yksikkötason aineisto

definition

a data set containing data from individual [statistical units](#)

note

Unit-based statistical data sets are produced in a [point-based foundation for statistics](#).

Concept diagram: [Set of statistics](#)

29

aggregated statistical data set; dimensional data set

fi aggregoitu tilastollinen aineisto; aggregoitu aineisto

definition

a data set compiled by combining data from [statistical units](#)

note

Municipal statistics and the consumer price index are examples of aggregated statistical data sets.

Concept diagram: [Set of statistics](#)

30

geospatially enabled statistics; geospatial statistics; location-based statistics; location-enabled statistics

fi paikkatietotilasto

definition

statistics containing [location data](#) or statistics that can be incorporated in location data

note

For example, demographic, building and housing statistics based on the Population Information System contain location data or location data can be incorporated in them.

Concept diagram: [Set of statistics](#)

31

point-based foundation for statistics

fi pistegeometriaan perustuva tilastointi

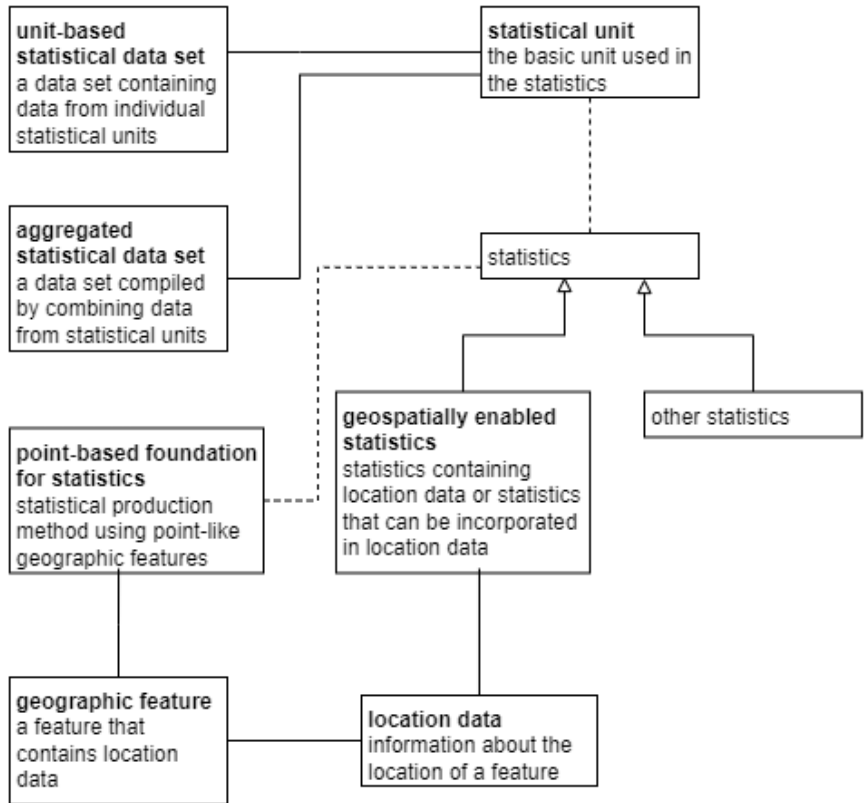
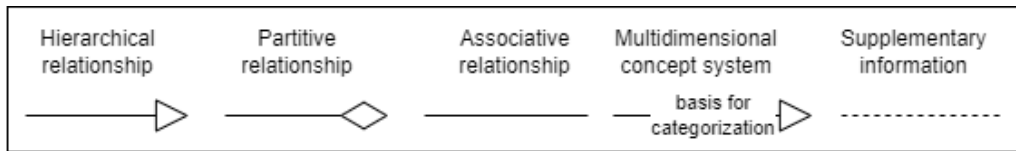
definition

a statistical production method using point-like [geographic features](#)

note

A point-based foundation for statistics uses point-like [location data](#) of [statistical units](#) such as buildings. There are also statistical production methods based on areal geometry.

Concept diagram: [Set of statistics](#)



Concept diagram 3. Set of statistics.

English index

Numbers in the index refer to the term record numbers.

administrative area	24	infrastructure for geospatial information	12
aggregated statistical data set	29	integration of statistical and geospatial information	13
areal classification	22	interoperability	14
areal division	19	location	1
coordinate	16	location data	5
coordinate reference system	18	location information	5
coordinate system	17	location-based statistics	30
dimensional data set	29	location-enabled statistics	30
direct position	2	municipality-based division	20
geocoding	4	point-based foundation for statistics	31
geographic data	7	position	1
geographic data set	11	regional classification	22
geographic feature	10	regional division	19
geographic information	7	reverse geocoding; see geocoding	4
geographic information system	8	SDI	12
geographic information	7	small area division	21
geoinformation	7	small-scale division	21
geospatial data	7	spatial data	7
geospatial data infrastructure	12	spatial data infrastructure	12
geospatial data set	11	spatial division	19
geospatial information	7	spatial information	7
geospatial information system	9	spatial object (1)	15
geospatial object	10	spatial object (2)	10
geospatial object	15	statistical area	25
geospatial reference information	6	statistical grid cell	26
geospatial statistics	30	statistical rectangle	26
geospatially enabled statistics	30	statistical unit	27
GIS	8	sub-division	21
grid cell	26	subdivision	21
hierarchical areal classification	23	unit data set	28
hierarchical regional classification	23	unit-based statistical data set	28
indirect position	3		

Finnish index

Numbers in the index refer to term record numbers.

aggregoitu aineisto	29	paikkatietotilasto	30
aggregoitu tilastollinen aineisto	29	pienaluejako	21
aluejako	19	pienalueluokitus; see pienaluejako	21
alueluokitus	22	pistegeometriaan perustuva tilastointi	31
datumi; see koordinaattijärjestelmä	18	sijainti	1
epäsuora sijainti	3	sijaintiobjekti	15
geokoodaus	4	sijaintitieto	5
hallinnollinen alue	24	sijaintitietojärjestelmä	9
hallintoalue	24	sijaintiviitetieto	6
hierarkkinen alueluokitus	23	suora sijainti	2
koordinaatisto	17	tilasto- ja paikkatietojen integrointi	13
koordinaatti	16	tilastointialue	25
koordinaattijärjestelmä	18	tilastointiyksikkö	27
koordinaattitieto	2	tilastollinen alue	25
kuntapohjainen aluejako	20	tilastollinen ruutu	26
käänteinen geokoodaus; see geokoodaus	4	tilastoruudukko; see tilastoruutu	26
NUTS; see hierarkkinen alueluokitus	23	tilastoruudusto; see tilastoruutu	26
paikka- ja tilastotietojen integrointi	13	tilastoruuduston solu; see tilastoruutu	26
paikkatieto	7	tilastoruutu	26
paikkatietoaineisto	11	tilastoyksikkö	27
paikkatietoinfrastruktuuri	12	yhteentoimivuus	14
paikkatietojärjestelmä	8	yksikkötason aineisto	28
paikkatietokohde	10	yksikkötason tilastollinen aineisto	28