

# Teollisuustuotannon volyymi-indeksi

Volymindex för industriproduktionen

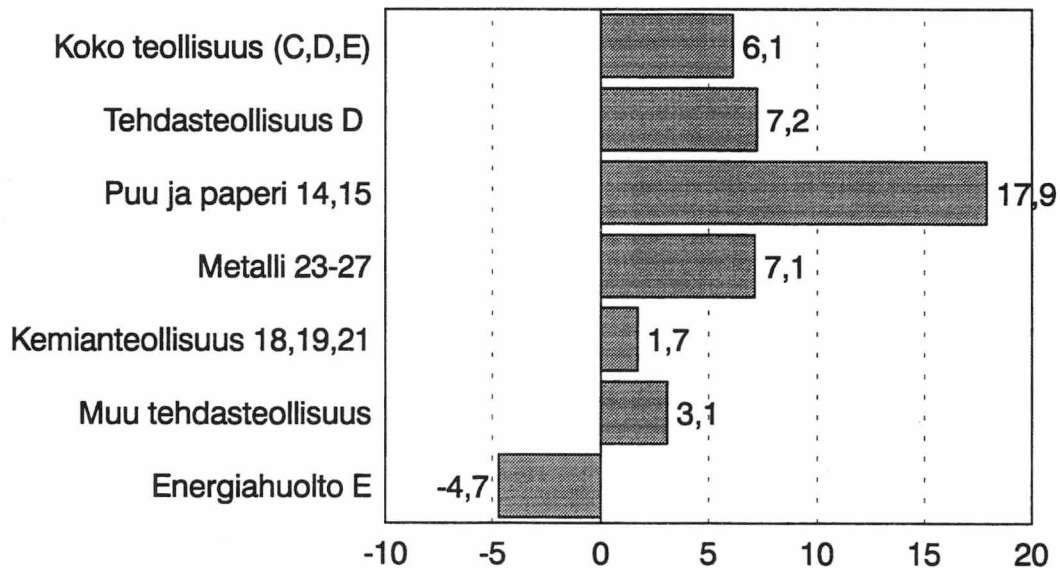
1997, tammi-toukokuu – januari-maj

1995 ja 1996

1990=100

## Teollisuustuotannon volyymien muutos

1997 / 1996 toukokuu (%) (työpäiväkorjattu)



# Teollisuustuotanto vahvalla kasvu-uralla

## Tuotanto kasvoi 6,1 prosenttia viime vuoden toukokuusta (työpäiväkorjattu)

Tuotannon kasvua pitävät yllä erityisesti paperi- ja rakennusaineteollisuuden kaksinumeroiset kasvuluvut. Paperin tuotanto kasvoi toukokuussa lähes 20 prosenttia ja tuotanto oli määrällisesti korkeimmillaan tällä vuosikymmenellä. Rakentamiseen liittyvä teollisuus kasvoi lähes 21 prosentin vauhtia. Rakennusaineteollisuudessa lähestytään määrällisesti vuoden 1990 huipulukuja. Metalliteollisuuden tuotanto kasvoi runsaat 7 prosenttia. Metalliteollisuuden päätoimialoista sähköteknisten tuotteiden valmistus kasvoi 12,5 prosenttia. Perusmetalliteollisuus kasvoi 8,5 prosenttia, koneteollisuus 6,4 prosenttia ja metallituoteteollisuus 10,4 prosenttia. Kemianteollisuuden tuotanto kasvoi toukokuussa 1,7 prosenttia ja muun tehdasteollisuuden 3,1 prosenttia. Sähkön tuotanto laski toukokuussa 4,7 prosenttia. Lasku selittyy pääosin sillä, että kotimaista tuotantoa korvattiin tuonnilla.

Teollisuustuotannon volyyymi-indeksi (1990=100) oli toukokuussa 132,1 eli 3,3 prosenttia suurempi kuin vuoden 1996 vastaava indeksi. Vuoden 1997 toukokuussa oli yksi työpäivä vähemmän kuin vuonna 1996,

mistä syystä työpäiväkorjattu indeksi kasvoi 6,1 prosenttia.

Tehdasteollisuuden kapasiteetista oli toukokuussa käytössä 88 prosenttia. Metalliteollisuuden käyttöaste oli lähes 89 prosenttia, puu- ja paperiteollisuuden käyttöaste oli 96 prosenttia, kemianteollisuuden lähes 79 prosenttia ja muun tehdasteollisuuden lähes 81 prosenttia.

Tammi-toukokuussa tuotanto kasvoi 7,7 prosenttia. Metalliteollisuuden tuotanto kasvoi vastaavana aikana 8,7 prosenttia ja puu- ja paperiteollisuuden tuotanto 15,4 prosenttia.

Ohessa julkaistaan myös vuoden 1995 lopulliset volyyymi-indeksiluvut sekä 1996 ennakkolliset tarkistetut luvut, myös alkuvuoden lukuja on tarkistettu hieman. Tarkistusten vaikutus muutosprosentteihin on pieni. Vuoden 1995 kasvu oli 7,8 prosenttia, kun ennakkollinen kasvu oli 7,5 prosenttia. Vuoden 1996 tarkitettu ennakkollinen kasvu oli 3,4 prosenttia, mikä on sama kuin helmikuussa julkaistu ensimmäinen ennakkotieto.

## Industriproduktionen i kraftig ökning

### Produktionen ökade från maj i fjol med 6,1 procent (arbetsdagskorrigerad)

Den kraftiga produktionsökningen upprätthålls framför allt av de tvåsiffriga tillväxttalen inom pappers- och byggnadsindustrin. Pappersproduktionen ökade i maj med nästan 20 procent och produktionsvolymen var som högst under detta årtionde. Produktionen inom den byggnadsanslutna industrin ökade med en hastighet på nästan 21 procent. Inom byggnadsmaterialindustrin närmar sig produktionsvolymen rekordsiffrorna från 1990. Metallindustriproduktionen ökade med drygt 7 procent. Av de huvudsakliga näringsgrenarna inom metallindustrin ökade tillverkningen av eltekniska produkter med 12,5 procent. Produktionen inom basmetallindustrin ökade med 8,5 procent, tillverkningen av maskiner med 6,4 procent och produktionen av metallvaror med 10,4 procent. Produktionen inom den kemiska industrin ökade i maj med 1,7 procent och produktionen inom den övriga tillverkningsindustrin med 3,1 procent. Elproduktionen minskade i maj med 4,7 procent. Minskningen förklaras huvudsakligen av att inhemsk produktion ersattes med import.

Volymindexet för industriproduktionen (1990=100) var i maj 132,1, dvs. 3,3 procent större än motsvarande index år 1996. Det fanns en arbetsdag färre i maj 1997

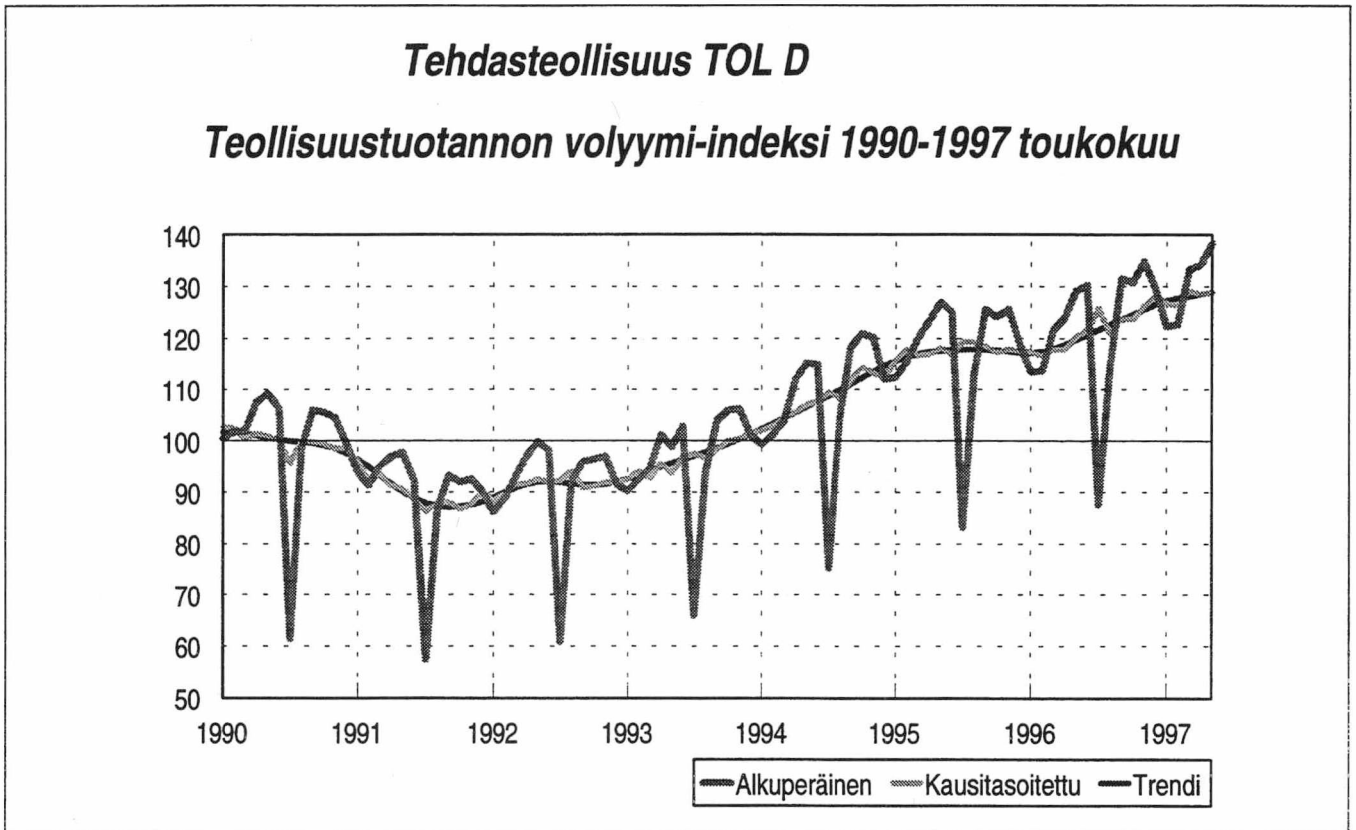
än i maj 1996, varför det arbetsdagskorrigerade indexet ökade med 6,1 procent.

Kapacitetsutnyttjandet inom tillverkningsindustrin var i maj 88 procent. Kapacitetsutnyttjandet inom metallindustrin var nästan 89 procent, inom trä- och pappersindustrin 96 procent, inom den kemiska industrin närmare 79 procent och inom den övriga tillverkningsindustrin nästan 81 procent.

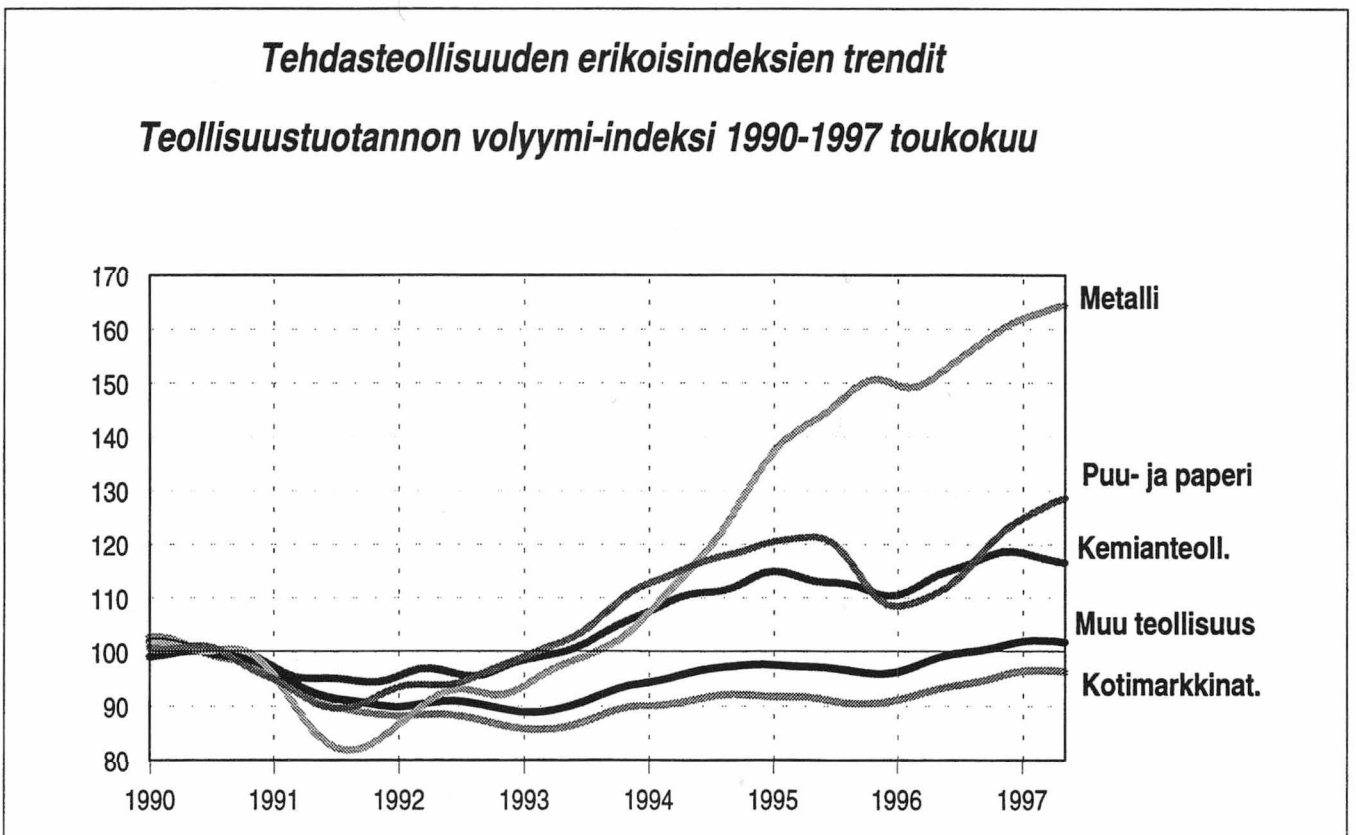
Under januari-maj ökade produktionen med 7,7 procent. Metallindustriproduktionen ökade under samma period med närmare 8,7 procent. Produktionen inom trä- och pappersindustrin ökade med 15,4 procent.

Här publiceras också de slutliga siffrorna för volymindexet år 1995 och de preliminära justerade siffrorna för år 1996. Också siffrorna för det första halvåret har justerats något. Justeringernas inverkan på förändringsprocenterna är liten. Tillväxten år 1995 var 7,8 procent, då den preliminära uppgiften var 7,5 procent. Den justerade preliminära ökningen år 1996 var 3,4 procent, dvs. samma som enligt den första preliminära uppgiften, som publicerades i februari.

Kuvio 1.



Kuvio 2.



TE:											
TEOLLISUUSTUOTANNON VOLYYMI-INDEKSI (ENNAKKOTIETOJA)											
VUOSI 1990 = 100											
	PAINO		1997				MUUTOSPROSENTIT				97/96
	1990	IV	V	I-V	IV	V	I-V	IV	V	I-V	
C,D,E KOKO TEOLLISUUS	100.0	117.6	127.8	120.4	135.9	132.1	127.6	15.6	3.3	5.9	
INVESTOINTITAVARAT	15.8	168.2	193.7	172.9	230.6	224.9	207.1	37.1	16.1	19.8	
KULUTUSHYÖDYKKEET	26.7	97.4	106.1	99.7	105.4	102.6	99.1	8.2	-3.3	-0.6	
MUUT TUOTANTOHYÖDYKKEET	57.5	112.8	120.7	115.6	127.4	123.5	121.2	12.9	2.4	4.9	
INDEKSIT TOIMIALOITTAIN											
C	KAIIVOS- JA KAIVANNAISTOIMINTA	1.3	73.7	85.7	71.8	78.1	83.3	74.4	5.9	-2.7	3.7
07	MALMIEN KAIVU	0.4	97.6	96.0	87.2	96.2	98.0	89.2	-1.5	2.1	2.3
09	MUU KAIVANNAISTOIMINTA	0.9	63.9	81.4	65.4	70.7	77.3	68.4	10.6	-5.1	4.5
D	TEOLLISUUS	89.6	117.9	129.7	120.1	137.8	135.0	127.8	16.8	4.1	6.4
11	ELINTARVIKE- ,JUOMA- JA TUPAKKATEOLL.	12.1	110.1	116.3	106.0	115.6	111.5	106.7	5.0	-4.1	0.7
111-5	ELINTARVIKKEIDEN VALMISTUS	8.6	114.4	119.0	109.7	120.0	114.4	111.4	4.9	-3.8	1.6
116	JUOMIEN VALMISTUS	2.3	105.1	112.2	102.9	107.6	106.4	99.3	2.4	-5.2	-3.5
117	TUPAKKATUOTTEIDEN VALMISTUS	0.5	79.2	100.8	70.7	104.2	106.7	81.8	31.5	5.8	15.7
119	REHUJEN VALMISTUS	0.5	107.0	125.8	109.3	112.8	113.3	107.5	5.4	-9.9	-1.6
12	TEKSTIILIIEN VALMISTUS	1.4	86.0	99.7	92.8	107.9	98.0	95.8	25.5	-1.7	3.3
13	VAAATTEIDEN, NAHKATUOTT. JA JALK.VALM.	1.7	44.3	64.1	55.0	48.8	61.0	52.4	10.3	-4.9	-4.8
131	VAAATTEIDEN VALMISTUS	1.3	37.0	59.0	47.1	39.7	57.3	45.3	7.3	-2.9	-3.8
132	NAHAN JA NAHKATUOTT. VALM.	0.1	49.9	48.9	49.2	53.8	52.0	47.7	7.8	6.3	-3.0
133	JALKINEIDEN VALMISTUS	0.3	70.6	89.9	88.0	82.5	78.9	81.6	17.0	-12.2	-7.2
14	PUUTAVARAN JA PUUTUOTT. VALMISTUS	5.2	111.3	111.3	107.6	139.0	122.3	120.9	24.9	10.0	12.4
15	MASSAN, PAPERIN JA -TUOTTEIDEN VALM.	11.6	116.0	116.7	116.4	133.9	139.1	134.0	15.4	19.2	15.1
16	KUSTANTAMINEN JA PAINAMINEN	8.3	89.0	97.6	90.8	98.3	99.0	90.6	10.4	1.4	-0.2
17	HUONEKALUJEN VALMISTAMINEN	1.9	83.1	87.3	84.4	111.1	97.7	98.3	33.7	12.0	16.4
18	KEMIKAALIEN JA KEMIAALL.TUOTT. VALM.	6.0	115.7	118.9	115.4	115.8	110.3	115.9	0.1	-7.2	0.5
181-4	PERUSKEMIKAALIEN VALMISTAMINEN	3.4	129.2	128.1	126.2	119.5	114.3	126.4	-7.5	-10.8	0.2
185-9	MUIDEN KEMIAALL. TUOTT. VALMISTUS	2.6	97.6	106.5	100.8	110.8	105.0	101.8	13.5	-1.4	1.0
19	ÖLJY- JA KIVIHIIILITUOTTEIDEN VALM.	2.4	104.0	125.6	120.7	122.7	141.1	130.4	17.9	12.3	8.0
191	ÖLJYN JALOSTUS	2.0	101.7	120.5	120.7	118.1	133.9	128.2	16.1	11.2	6.2
192	ÖLJYTUOTTEIDEN JATKOJALOSTUS	0.4	82.2	114.2	83.8	114.5	141.6	106.4	39.3	24.0	27.0
21	KUMI- JA MUOVITUOTT. VALMISTUS	2.6	109.9	117.7	112.4	124.5	123.2	116.1	13.3	4.7	3.3
211	KUMITUOTTEIDEN VALMISTUS	0.4	141.1	147.9	149.4	143.6	146.7	137.9	1.8	-0.8	-7.7
212	MUOVITUOTTEIDEN VALMISTUS	2.2	104.6	112.6	106.1	121.3	119.3	112.4	15.9	5.9	6.0
22	LASI-, SAVI- JA KIVITUOTT. VALM.	4.1	72.3	88.2	72.8	95.0	103.7	84.0	31.4	17.6	15.4
221	LASIN JA LASITUOTT. VALMISTUS	0.5	123.0	135.0	123.3	165.4	139.0	133.3	34.5	3.0	8.2
222	POSLIINITUOTT. JA SAVIASTIAIN VALM.	0.2	58.6	58.4	62.7	89.9	85.0	82.0	53.5	45.5	30.8
223-9	MUU LASI-, SAVI- JA KIVITUOTT. VALM.	3.4	65.9	83.6	66.1	85.1	99.9	76.9	29.1	19.6	16.3
23	METALLIEN VALMISTUS	3.9	144.0	147.6	144.7	165.2	158.9	156.5	14.7	7.7	8.1
231	RAUDAN JA TERÄKSEN VALMISTUS	2.4	153.8	151.7	151.5	170.8	165.6	167.1	11.0	9.2	10.3
232	MUIDEN KUIN RAUTAMETALL.VALMISTUS	1.0	131.9	146.4	136.3	159.4	153.0	144.8	20.9	4.5	6.2
233	METALLIEN VALU	0.5	121.3	130.0	129.2	150.1	138.4	129.2	23.8	6.5	0.0
24	METALLITUOTTEIDEN VALMISTUS	4.5	99.1	116.1	106.3	118.5	123.1	112.6	19.6	6.1	5.8
25	KONEIDEN JA LAITTEIDEN VALMISTUS	10.8	111.3	128.5	109.4	130.9	130.7	112.5	17.6	1.7	2.8
251	YLEISKÄYTTÖÖN TARK. KONEIDEN VALM.	4.9	107.5	127.7	111.4	132.5	120.3	113.7	23.3	-5.8	2.1
252	ERIKOISKONEIDEN VALMISTUS	5.2	105.5	126.6	107.1	128.8	144.0	113.8	22.1	13.7	6.3
26	SÄHKÖTEKNISTEN TUOTT. JA INSTRUM. VALM.	8.0	243.0	282.0	259.4	319.2	298.5	290.0	31.3	5.8	11.8
261-3	SÄHKÖTEKNISTEN TUOTT. VALMISTUS	6.8	260.2	308.8	282.5	350.6	332.5	319.5	34.8	7.7	13.1
264	INSTRUMENTTIEN JA HIENOMEK. TUOTT.VALM.	1.2	148.5	134.6	132.4	146.1	111.4	127.8	-1.6	-17.2	-3.5
27	KULKUNEUVOJEN VALMISTUS	4.1	105.0	121.6	110.6	107.7	101.7	97.5	2.7	-16.4	-11.9
271-2	LAIVOJEN JA VAP.AJAN VENEIDEN VALMISTUS	1.7	143.0	161.5	151.3	138.8	133.1	121.3	-2.9	-17.6	-19.8
273,275,279	MUIDEN KULKUNEUVOJEN VALMISTUS	0.9	82.4	100.4	86.4	83.1	84.6	83.1	0.9	-15.7	-3.9
274	AUTOJEN JA PERÄVAUNUJEN VALMISTUS	1.5	74.4	88.0	78.1	86.7	75.6	78.6	16.5	-14.1	0.7
29	MUU VALMISTUS	1.0	102.1	126.4	104.8	111.5	108.0	103.6	9.2	-14.5	-1.2
E	ENERGIA- JA VESIHUOLTO	9.1	120.5	115.2	130.4	125.9	110.1	133.3	4.5	-4.5	2.2
31	SÄHKÖHUOLTO	8.4	121.8	115.9	132.4	127.5	110.5	135.7	4.7	-4.7	2.5
34	VEDEN PUHDISTUS JA JAKELU	0.7	103.0	105.6	104.4	103.4	104.7	102.4	0.4	-0.9	-2.0
TEHDASTEOLLISUUDEN ERIKOISINDEKSIT											
14,15	PUU- JA PAPERITEOLLISUUS	16.8	114.5	115.0	113.7	135.5	133.9	129.9	18.3	16.4	14.3
23-27	METALLITEOLLISUUS	31.3	146.6	167.6	152.0	178.7	172.4	161.6	21.9	2.9	6.3
18,19,21	KEMIANTEOLLISUUS	11.0	111.8	120.0	115.8	119.4	120.1	119.1	6.8	0.0	2.8
MUU D	MUU TEOLLISUUS	30.5	92.5	102.3	92.5	103.6	102.6	95.1	12.0	0.3	2.8

TE:  
TEOLLISUUSTUOTANNON TYÖPÄIVÄKORJATTU VOLYYMI-INDEKSI (ENNAKKOTIETOJA)

VUOSI 1990 = 100	PAINO 1996				1997			MUUTOSPROSENTIT			97/96
	1990	IV	V	I-V	IV	V	I-V	IV	V	I-V	
C,D,E KOKO TEOLLISUUS	100.0	123.0	127.3	120.6	132.8	135.1	129.8	8.0	6.1	7.7	
INVESTOINTITAVARAT	15.8	177.8	193.5	173.2	220.6	234.9	212.5	24.1	21.4	22.7	
KULUTUSHYÖDYKKEET	26.7	102.4	105.7	99.8	102.7	104.9	100.8	0.3	-0.8	1.0	
MUUT TUOTANTOHYÖDYKKEET	57.5	117.5	120.1	115.7	125.5	125.6	122.9	6.8	4.6	6.3	

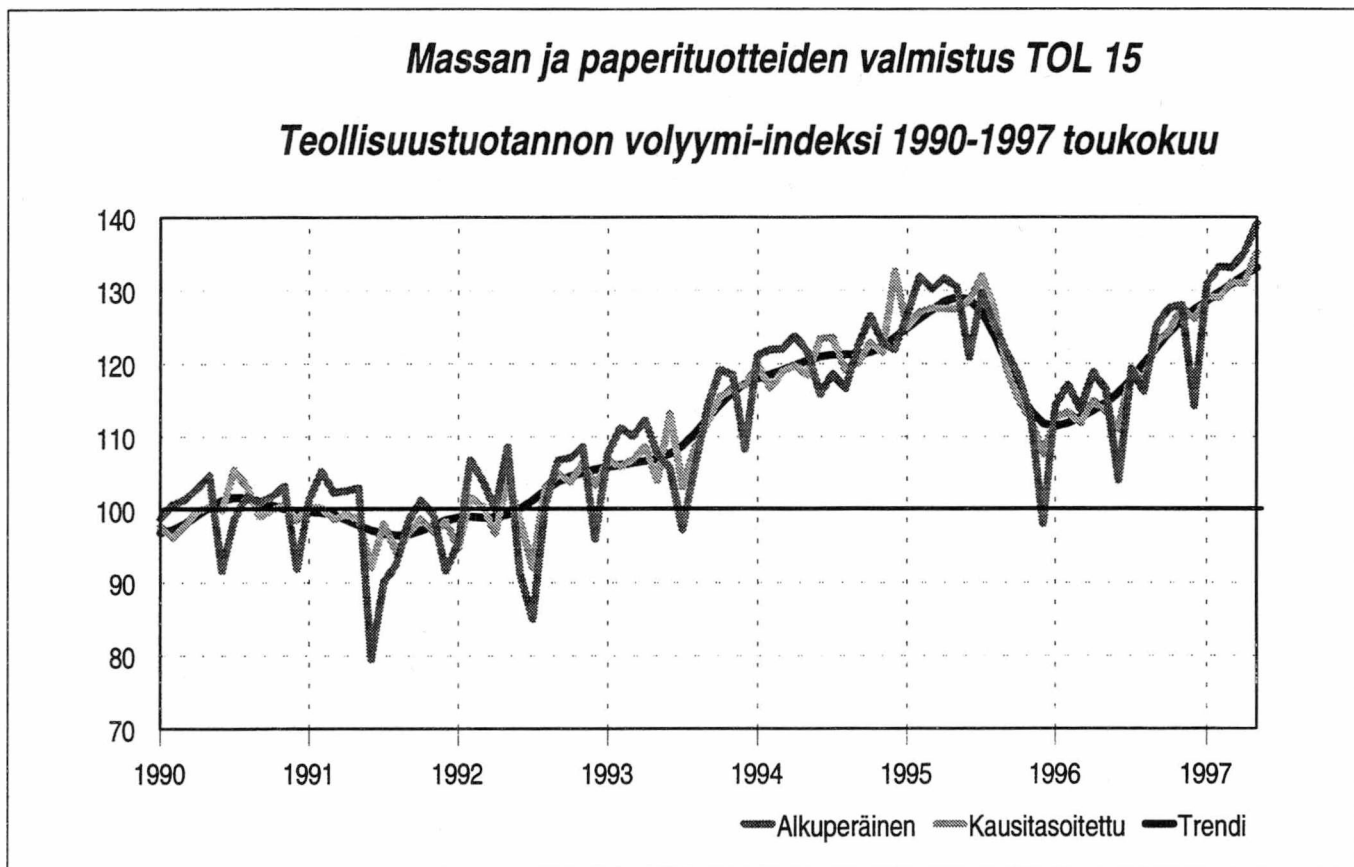
INDEKSIT TOIMIALOITTAIN

C	KAIIVOS- JA KAIVANNAISTOIMINTA	1.3	75.9	84.3	71.6	77.8	83.2	75.2	2.4	-1.3	5.0
07	MALMIEN KAIVU	0.4	99.3	94.1	87.0	97.5	95.8	89.4	-1.8	1.8	2.8
09	MUU KAIVANNAISTOIMINTA	0.9	66.4	80.3	65.3	69.7	78.1	69.4	4.9	-2.8	6.2
D	TEOLLISUUS	89.6	123.8	129.1	120.3	134.2	138.4	130.1	8.4	7.2	8.2
11	ELINTARVIKE- ,JUOMA- JA TUPAKKATEOLL.	12.1	116.1	115.7	106.1	111.8	114.6	108.8	-3.7	-1.0	2.5
111-5	ELINTARVIKKEIDEN VALMISTUS	8.6	120.6	118.4	109.8	115.6	117.7	113.7	-4.1	-0.5	3.5
116	JUOMIEN VALMISTUS	2.3	110.2	111.8	103.0	105.2	108.6	100.7	-4.5	-2.9	-2.2
117	TUPAKKATUOTTEIDEN VALMISTUS	0.5	84.7	100.5	71.1	100.7	111.2	83.9	18.8	10.6	18.0
119	REHUJEN VALMISTUS	0.5	115.1	125.2	109.7	109.5	116.1	109.9	-4.9	-7.3	0.2
12	TEKSTIILIEN VALMISTUS	1.4	91.7	98.5	92.8	105.1	99.3	97.4	14.6	0.8	5.0
13	VAAATTEIDEN, NAHKATUOTT. JA JALK.VALM.	1.7	46.9	64.0	54.9	46.8	63.7	53.7	-0.3	-0.5	-2.2
131	VAAATTEIDEN VALMISTUS	1.3	39.1	58.9	47.0	38.0	59.8	46.5	-2.9	1.6	-1.1
132	NAHAN JA NAHKATUOTT. VALM.	0.1	53.2	48.7	49.3	51.4	54.2	48.8	-3.5	11.1	-1.0
133	JALKINEIDEN VALMISTUS	0.3	74.9	89.7	87.8	79.2	82.3	83.6	5.8	-8.2	-4.7
14	PUUTAVARAN JA PUUTUOTT. VALMISTUS	5.2	119.7	110.9	108.0	135.3	126.8	123.7	13.1	14.4	14.6
15	MASSAN, PAPERIN JA -TUOTTEIDEN VALM.	11.6	118.8	116.5	116.1	135.3	139.1	134.3	13.9	19.5	15.7
16	KUSTANTAMINEN JA PAINAMINEN	8.3	93.6	97.1	90.8	95.9	99.6	91.6	2.6	2.6	0.8
17	HUONEKALUJEN VALMISTAMINEN	1.9	88.2	87.1	84.5	106.6	102.0	100.8	20.9	17.1	19.3
18	KEMIKAALIEN JA KEMIAALL.TUOTT. VALM.	6.0	119.6	117.7	115.7	114.9	111.1	117.6	-3.9	-5.6	1.6
181-4	PERUSKEMIKAALIEN VALMISTAMINEN	3.4	131.4	126.2	126.5	120.6	112.6	127.3	-8.2	-10.8	0.6
185-9	MUIDEN KEMIAALL. TUOTT. VALMISTUS	2.6	103.7	106.2	101.0	107.2	109.0	104.4	3.4	2.7	3.3
19	ÖLJY- JA KIVIHILITUOTTEIDEN VALM.	2.4	106.4	123.8	121.1	123.5	139.9	131.7	16.0	13.0	8.8
191	ÖLJYN JALOSTUS	2.0	103.4	118.5	121.1	119.8	131.4	129.2	15.8	10.9	6.7
192	ÖLJYTUOTTEIDEN JATKOJALOSTUS	0.4	88.0	113.8	84.0	110.5	147.6	109.3	25.6	29.7	30.1
21	KUMI- JA MUOVITUOTT. VALMISTUS	2.6	116.0	117.1	112.4	121.5	126.1	118.2	4.7	7.7	5.1
211	KUMITUOTTEIDEN VALMISTUS	0.4	149.3	147.6	149.4	137.5	153.1	141.6	-7.9	3.7	-5.2
212	MUOVITUOTTEIDEN VALMISTUS	2.2	110.4	112.0	106.1	118.8	121.5	114.2	7.7	8.5	7.6
22	LASI-, SAVI- JA KIVITUOTT. VALM.	4.1	76.6	87.5	72.9	93.8	105.5	85.4	22.5	20.7	17.0
221	LASIN JA LASITUOTT. VALMISTUS	0.5	127.4	133.7	123.1	165.0	139.3	134.5	29.5	4.2	9.3
222	POSLEINITUOTT. JA SAVIASTIAIN VALM.	0.2	61.1	58.2	62.6	86.6	87.7	83.7	41.7	50.6	33.6
223-9	MUU LASI-,SAVI- JA KIVITUOTT. VALM.	3.4	70.3	82.9	66.4	83.9	101.9	78.3	19.4	23.0	18.0
23	METALLIEN VALMISTUS	3.9	148.5	145.5	145.0	165.5	157.9	158.1	11.5	8.5	9.0
231	RAUDAN JA TERÄKSEN VALMISTUS	2.4	157.5	149.3	151.9	172.6	162.9	168.4	9.6	9.1	10.9
232	MUIDEN KUIN RAUTAMETALL.VALMISTUS	1.0	135.7	144.5	136.5	158.3	152.8	146.4	16.6	5.7	7.3
233	METALLIEN VALU	0.5	131.3	129.2	129.2	146.6	144.0	132.6	11.6	11.4	2.6
24	METALLITUOTTEIDEN VALMISTUS	4.5	106.4	116.2	106.6	114.7	128.2	115.5	7.8	10.4	8.4
25	KONEIDEN JA LAITTEIDEN VALMISTUS	10.8	117.6	128.3	109.6	125.2	136.5	115.3	6.4	6.4	5.2
251	YLEISKÄYTTÖÖN TARK. KONEIDEN VALM.	4.9	113.6	127.6	111.5	126.6	125.7	116.6	11.5	-1.5	4.6
252	ERIKOISKONEIDEN VALMISTUS	5.2	111.7	126.4	107.3	123.3	150.4	116.7	10.4	19.0	8.8
26	SÄHKÖTEKNISTEN TUOTT. JA INSTRUM. VALM.	8.0	256.1	281.7	259.6	304.7	311.7	297.7	19.0	10.6	14.7
261-3	SÄHKÖTEKNISTEN TUOTT. VALMISTUS	6.8	274.3	308.5	282.6	334.8	347.2	328.1	22.1	12.5	16.1
264	INSTRUMENTTIEN JA HIENOMEK. TUOTT.VALM.	1.2	155.9	134.6	132.7	138.9	116.5	130.7	-10.9	-13.5	-1.5
27	KULKUNEUVOJEN VALMISTUS	4.1	111.9	121.3	110.8	103.9	106.1	100.1	-7.2	-12.5	-9.6
271-2	LAIVOJEN JA VAP.AJAN VENEIDEN VALMISTUS	1.7	153.6	160.9	151.6	134.7	138.6	124.6	-12.3	-13.8	-17.8
273,275,279	MUIDEN KULKUNEUVOJEN VALMISTUS	0.9	86.9	100.3	86.5	79.5	88.4	85.3	-8.5	-11.9	-1.4
274	AUTOJEN JA PERÄVAUNUJEN VALMISTUS	1.5	78.7	87.8	78.1	83.0	78.9	80.7	5.5	-10.1	3.2
29	MUU VALMISTUS	1.0	107.7	126.1	104.9	106.5	112.8	106.3	-1.1	-10.6	1.3
E	ENERGIA- JA VESIHUOLTO	9.1	121.8	115.2	130.8	126.9	109.8	134.2	4.2	-4.7	2.6
31	SÄHKÖHUOLTO	8.4	123.1	116.1	132.7	128.6	110.3	136.5	4.4	-5.0	2.9
34	VEDEN PUHDISTUS JA JAKELU	0.7	104.7	103.9	104.8	104.8	102.7	103.1	0.1	-1.2	-1.6

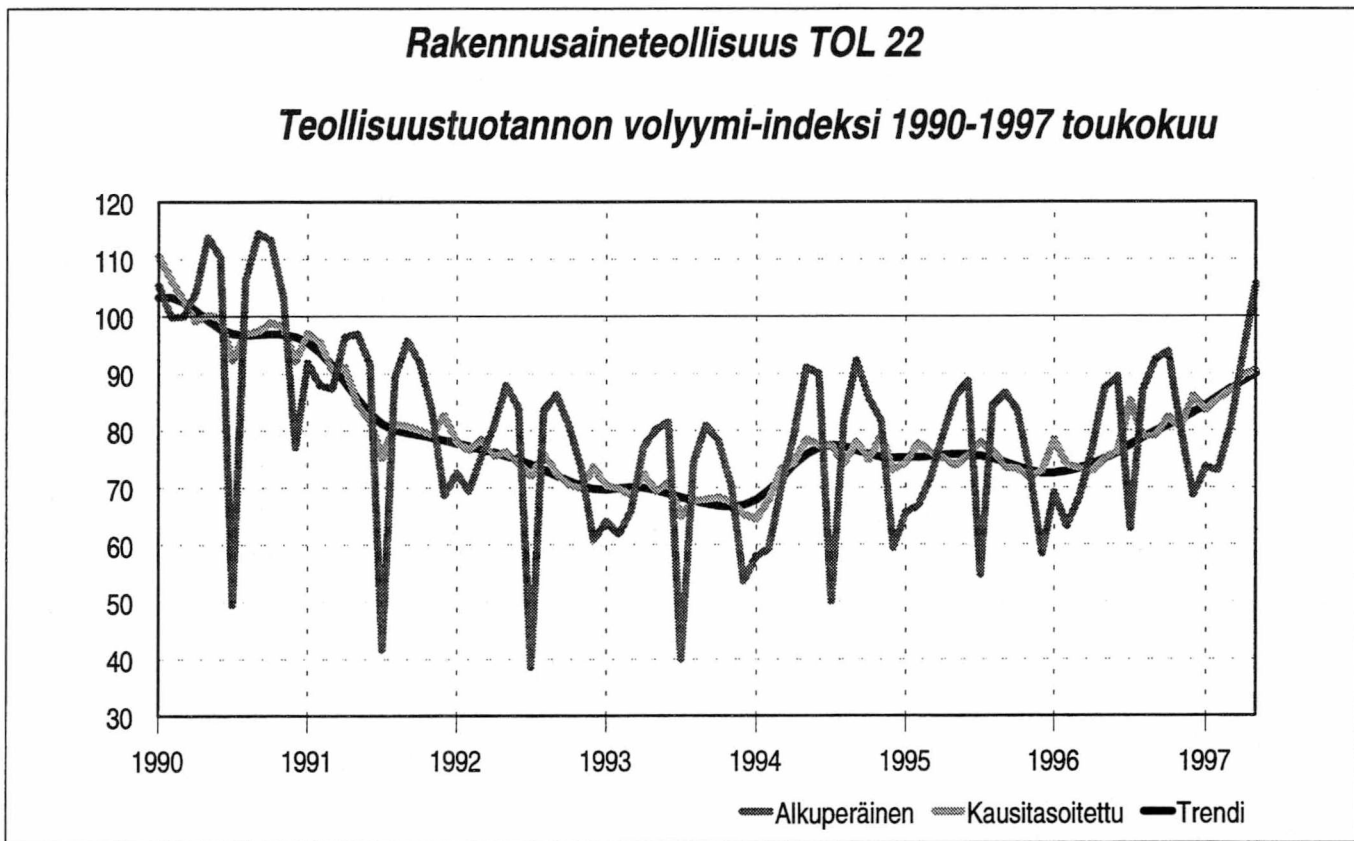
TEHDASTEOLLISUUDEN ERIKOISINDEKSIT

14,15	PUU- JA PAPERITEOLLISUUS	16.8	119.1	114.7	113.6	135.3	135.3	131.0	13.6	17.9	15.4
23-27	METALLITEOLLISUUS	31.3	154.7	167.2	152.3	172.0	179.0	165.5	11.2	7.1	8.7
18,19,21	KEMIANTEOLLISUUS	11.0	115.9	118.9	116.1	118.3	120.9	120.7	2.1	1.7	4.0
MUU D	MUU TEOLLISUUS	30.5	97.6	101.7	92.6	100.6	104.8	96.7	3.0	3.1	4.5

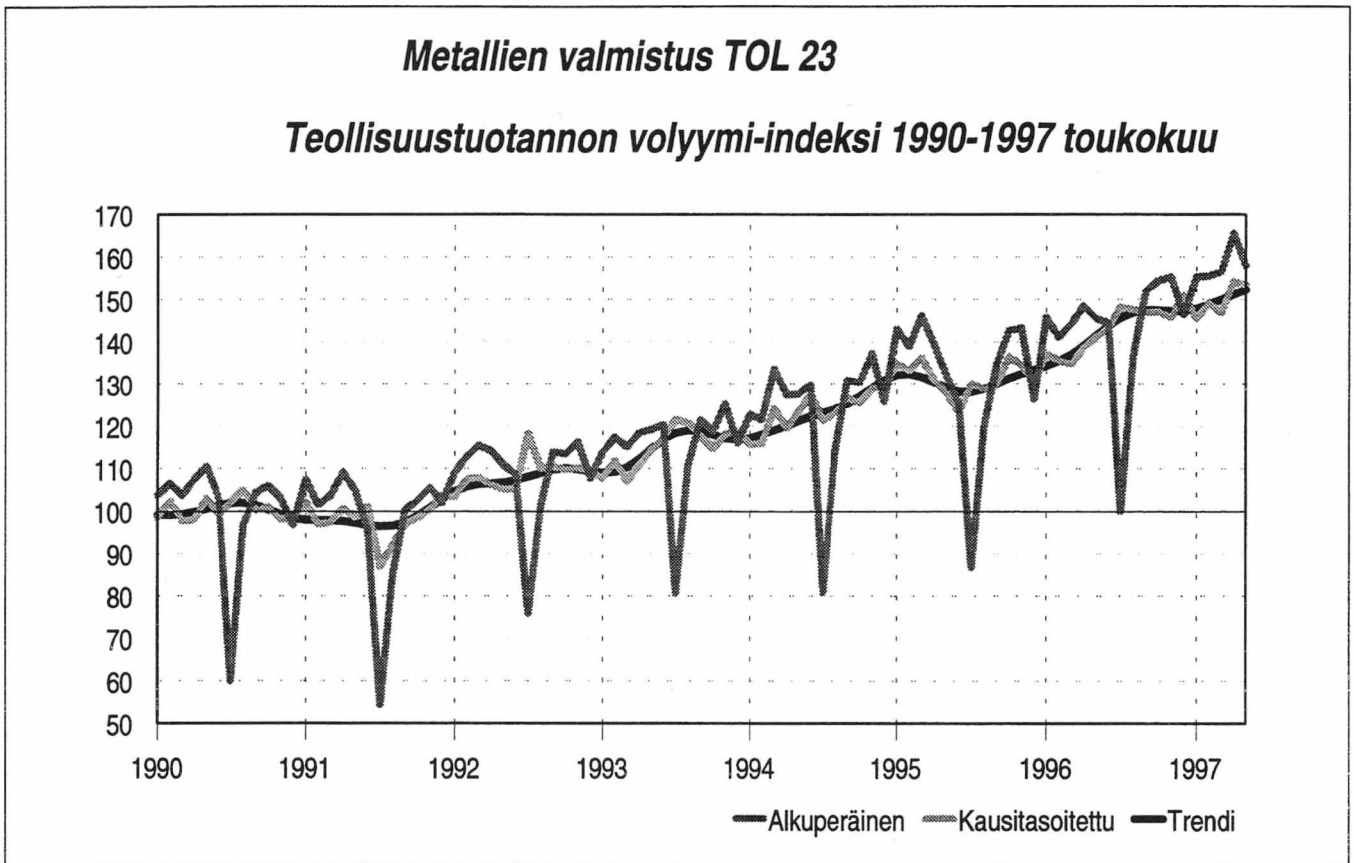
Kuvio 3.



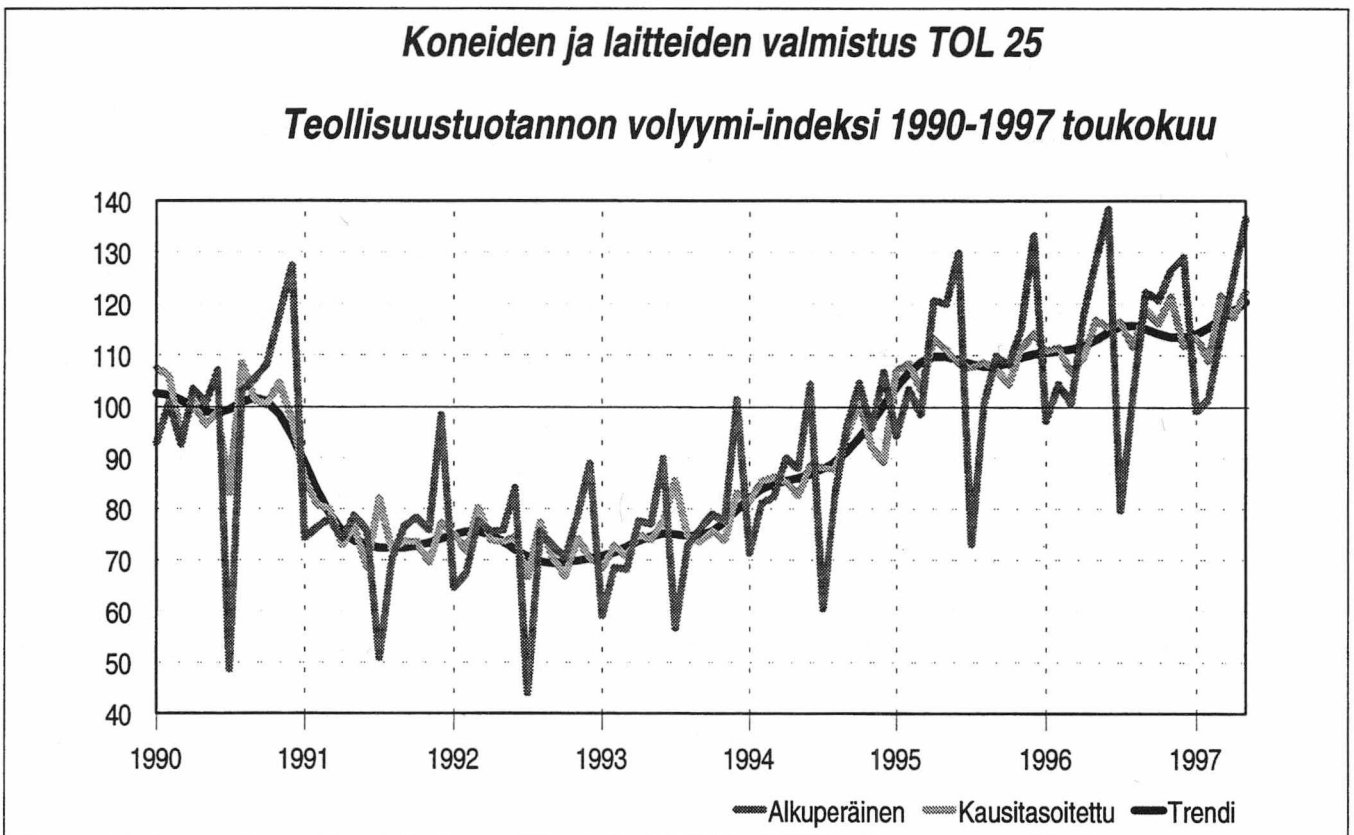
Kuvio 4.



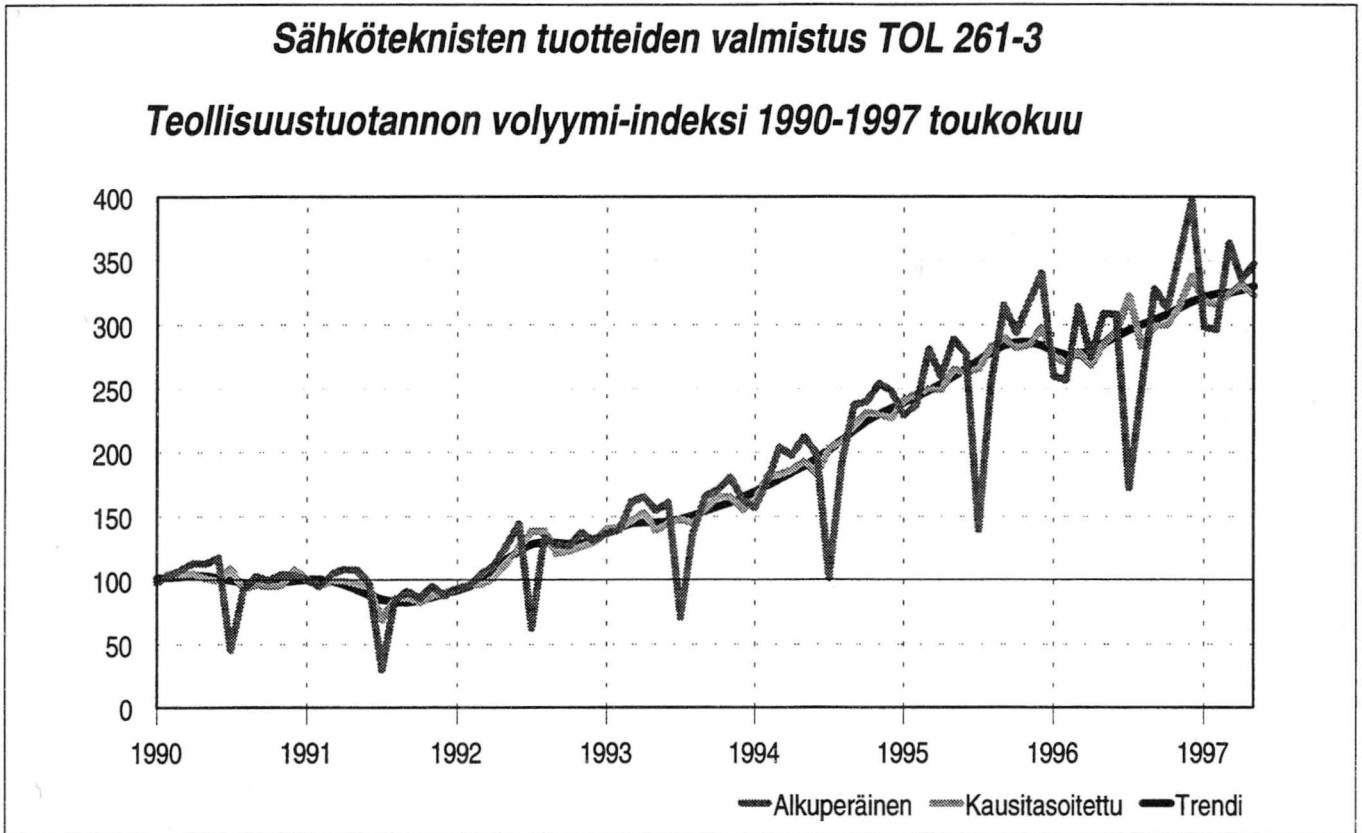
Kuvio 5.



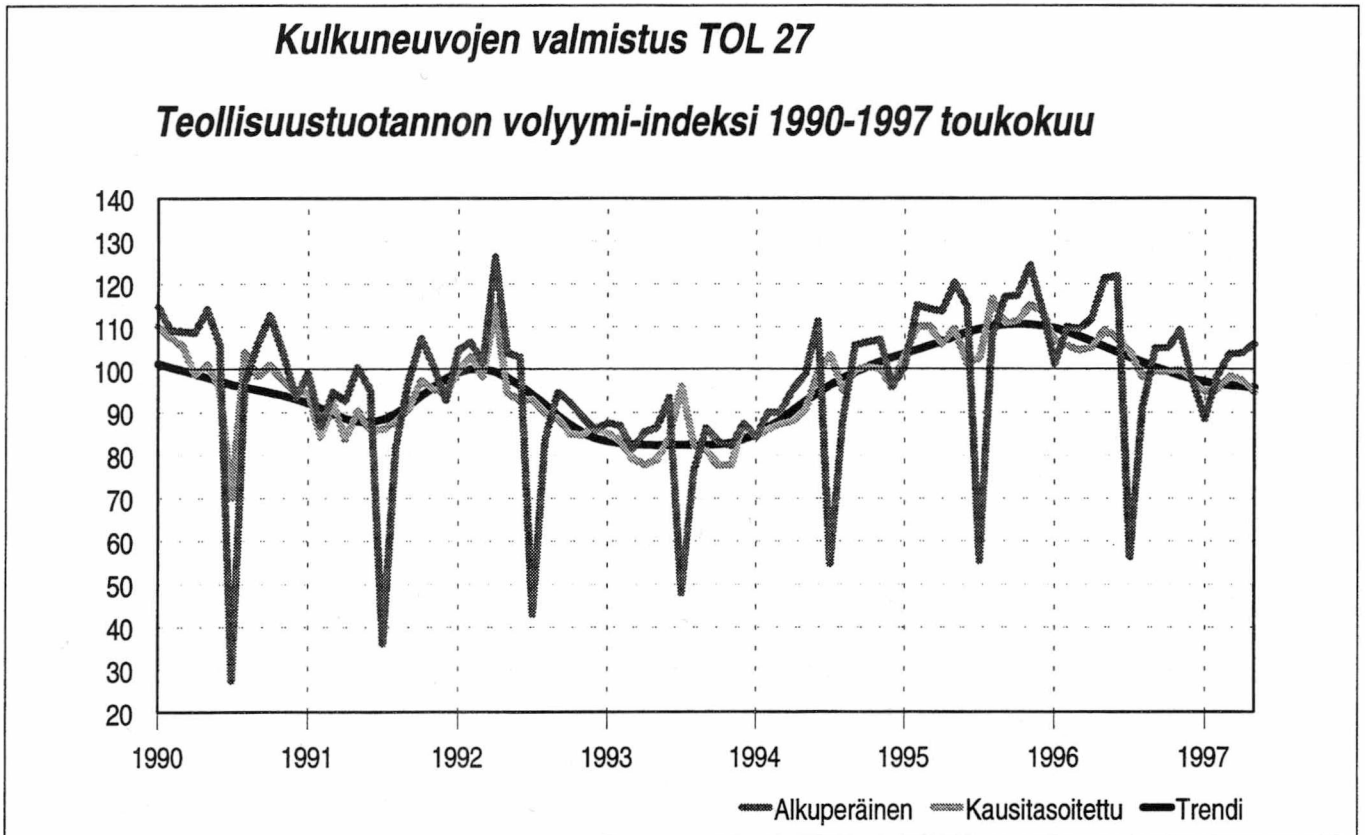
Kuvio 6.



Kuvio 7.



Kuvio 8.



## *Teollisuustuotannon volyymi-indeksi 1995, 1996 ja 1997 tammi-toukokuu*

Oheisena julkaistaan myös vuoden 1995 ja 1996 indeksisarjat. Samalla on myös alkuvuoden indeksejä korjattu perustietojen tarkentumisen johdosta. Indeksisarjojen sisäistä jakaumaa on myös korjattu painorakenteen uudistamisen johdosta.

Taulussa 1 kuvataan teollisuustuotannon kuukausittaiset volyymi-indeksit sekä indeksien muutosprosentit

verrattuna edellisen vuoden vastaaviin kuukausiin. Taulussa 2 kuvataan teollisuustuotannon volyymi-indeksit työpäivää kohti. Tauluissa oleva lyhenne ULT (ultimo) tarkoittaa teollisuustuotannon kuukausittaisen volyymi-indeksien keskiarvoa laskettuna vuoden alusta lähtien.

## *Volymindex för industriproduktionen; månadsvis 1995, 1996 och 1997 januari-maj*

Indexserierna för 1995 och 1996 publiceras även här. Samtidigt har uppgifterna för början av året korrigerats efter en precisering av basuppgifterna. Indexseriernas inre fördelning har även korrigerats till följd av den reviderade viktstrukturen.

I tabell 1 ges industriproduktionens volymindex samt indexens procentuella förändringar från motsvarande månader föregående år. I tabell 2 ges industriproduktionens volymindex per arbetsdag. Förkortningen ULT (ultimo) i tabellerna betyder medelvärdet av de månatliga indexen beräknade från årets början.

## *The monthly volume index of industrial production for 1995, 1996 and 1997 January - May*

The index series for 1995 and 1996 are published here. At the same time, the indices for the beginning of the year have been corrected to reflect adjustments in the basic data. The internal breakdown of the index series has also been corrected to reflect the revised weight structure.

Table 1 shows the monthly volume indices of industrial production and their per cent change from the

corresponding months in the preceding year. Table 2 shows the indices of industrial production per working day. The abbreviation ULT (ultimo) in the tables refers to the mean of the monthly volume indices as calculated from the beginning of the year.

TAULU 1:  
TEOLLISUUSTUOTANNON VOLYYMI-INDEKSI V. 1995  
INDUSTRIPRODUKTIONS VOLYMINDEKX ÅR 1995

NELJÄNNEKSET  
KVARTAL

TOL NI	TAMMI JAN	HELMI FEBR	MAALIS MARS	HUHTI APRIL	TOUKO MAJ	KESÄ JUNI	HEINÄ JULI	ELO AUG	SYYS SEPT	LOKA OKTOB	MARRAS NOVEMB	JOULU DEC	I	II	III	IV	
07	89.2 -2.1	78.4 6.4	98.6 14.1	81.4 -17.2	72.5 -4.9	77.3 -3.9	83.1 -10.5	63.3 -17.5	92.1 -1.6	67.1 7.3	76.1 -5.0	74.0 5.5					
ULT %	89.2 -2.1	83.8 1.7	88.7 6.0	86.9 -0.5	84.0 -1.3	82.9 -1.7	82.9 -3.1	80.5 -4.7	81.8 -4.3	80.3 -3.5	79.9 -3.6	79.4 -3.0	88.7 6.0	77.1 -9.3	79.5 -9.4	72.4 2.1	
09	63.6 -5.0	57.5 12.7	71.0 3.8	63.6 2.7	70.7 -32.2	145.1 -4.4	202.6 -26.3	265.1 41.7	75.3 -5.5	73.6 15.7	72.2 11.8	53.0 -11.4					
ULT %	63.6 -5.0	60.5 2.6	64.0 3.1	63.9 3.0	65.3 -7.4	78.6 -6.5	96.3 -13.5	117.4 -2.8	112.7 -3.0	108.8 -1.9	105.5 -1.2	101.1 -1.7	64.0 3.1	93.1 -12.1	181.0 0.3	66.3 5.8	
C	71.0 -4.0	63.6 10.3	79.0 7.3	68.8 -5.1	71.2 -25.9	125.4 -4.3	167.8 -24.4	206.4 33.2	80.1 -4.2	71.7 13.3	73.3 6.2	59.1 -5.9					
ULT %	71.0 -4.0	67.3 2.3	71.2 4.1	70.6 1.7	70.7 -5.4	79.8 -5.1	92.4 -11.0	106.7 -3.2	103.7 -3.3	100.5 -2.3	98.0 -1.8	94.8 -2.0	71.2 4.1	88.5 -11.4	151.5 -1.3	68.0 4.6	
111-5 %	96.1 -1.8	93.0 -1.0	109.3 19.6	101.5 -7.4	111.1 -3.3	113.3 0.6	85.3 0.1	106.6 -1.6	105.3 -3.9	130.0 4.1	126.0 -1.9	96.3 -6.1					
ULT %	96.1 -1.8	94.5 -1.4	99.5 5.4	100.0 1.8	102.2 0.6	104.0 0.6	101.4 0.6	102.0 0.3	102.4 -0.2	105.1 0.3	107.0 0.1	106.1 -0.4	99.5 5.4	108.6 -3.3	99.0 -2.0	117.4 -1.0	
116	103.2 10.1	90.6 8.5	103.0 43.9	94.3 -3.7	114.3 8.1	123.5 15.8	122.2 12.7	107.5 -11.0	85.8 -4.9	97.5 9.9	91.5 -9.0	92.9 -2.5					
ULT %	103.2 10.1	96.9 9.3	98.9 19.2	97.8 12.8	101.1 11.7	104.8 12.5	107.3 12.5	107.3 8.9	104.9 7.5	104.2 7.7	103.0 6.1	102.2 5.4	98.9 19.2	110.7 7.0	105.2 -1.3	94.0 -0.9	
117	59.0 -22.6	49.9 2.3	86.3 43.8	75.5 -10.1	107.5 8.6	102.8 -1.3	16.3 20.2	104.1 -12.2	81.0 -34.5	84.4 -12.7	84.6 11.3	50.7 -38.2					
ULT %	59.0 -22.6	54.4 -12.9	65.0 5.5	67.7 0.6	75.6 2.8	80.1 1.9	71.0 2.4	75.2 -0.5	75.8 -6.3	76.7 -7.0	77.4 -5.5	75.2 -8.2	65.0 5.5	95.2 -0.5	67.1 -21.2	73.2 -13.8	
119	130.2 61.0	88.6 26.4	121.1 51.3	103.5 9.6	132.5 18.8	115.2 12.4	123.6 29.3	132.9 25.7	106.7 1.8	108.9 20.3	112.5 47.9	113.5 8.7					
ULT %	130.2 61.0	109.4 44.9	113.3 39.7	110.9 31.3	115.2 28.2	115.2 25.2	116.4 25.8	118.5 25.8	117.2 22.9	116.3 22.6	116.0 24.5	115.8 23.1	113.3 39.7	117.1 13.8	121.1 18.7	111.7 23.6	
11	96.5 1.9	89.8 1.8	107.0 25.1	98.4 -6.1	111.4 -0.1	113.8 3.3	90.2 4.3	107.0 -3.0	99.7 -5.6	119.7 4.7	115.9 -1.4	93.6 -6.0					
ULT %	96.5 1.9	93.2 1.9	97.8 9.3	97.9 4.9	100.6 3.8	102.8 3.7	101.0 3.8	101.8 2.8	101.5 1.8	103.4 2.1	104.5 1.8	103.6 1.2	97.8 9.3	107.9 -0.9	99.0 -1.8	109.8 -0.7	
12	89.7 9.9	92.5 11.7	102.7 6.3	91.8 0.3	99.8 -5.1	93.3 -6.1	34.0 -3.7	103.9 -4.4	95.4 -14.1	95.1 -7.3	99.2 -8.1	69.2 -12.2					
ULT %	89.7 9.9	91.1 10.8	95.0 9.1	94.2 6.8	95.3 4.1	95.0 2.3	86.3 1.9	88.5 0.9	89.2 -1.1	89.8 -1.8	90.7 -2.5	88.9 -3.2	95.0 9.1	95.0 -3.8	77.7 -8.6	87.8 -8.9	

TAULU 1:  
TEOLLISUUSTUOTANNON VOLYYMI-INDEKSI V.1995  
INDUSTRIPRODUKTIONS VOLYMINDEX ÅR 1995

NELJÄNNEKSET  
KVARTAL

TOL NI	TAMMI JAN	HELMI FEBR	MAALIS MARS	HUHTI APRIL	TOUKO MAJ	KESÄ JUNI	HEINÄ JULI	ELO AUG	SYYS SEPT	LOKA OKTOB	MARRAS NOVEMB	JOULU DEC	I	II	III	IV
131	%	58.7 -7.3	53.2 -18.1	42.8 -29.9	39.2 -23.0	66.4 -19.2	51.0 -27.0	22.5 -21.3	72.4 -8.6	54.7 -24.3	49.2 -13.9	38.3 -29.5				
ULT	%	58.7 -7.3	55.9 -12.8	51.6 -18.3	48.5 -19.3	52.1 -19.3	51.9 -20.7	47.7 -20.7	50.8 -18.8	52.8 -19.7	52.5 -19.2	51.3 -20.0	51.6 -18.3	52.2 -22.9	54.2 -16.0	47.4 -22.6
132	%	57.1 -28.1	54.1 -25.9	64.4 -24.4	53.3 -23.6	51.8 -30.5	56.6 -29.2	4.0 -76.4	50.0 -38.1	50.4 -31.4	52.4 -38.0	37.4 -45.5				
ULT	%	57.1 -28.1	55.6 -27.0	58.5 -26.1	57.2 -25.5	56.1 -26.5	56.2 -27.0	48.8 -28.7	48.9 -30.1	49.1 -30.6	49.4 -31.4	48.4 -32.6	58.5 -26.1	53.9 -27.9	34.5 -40.2	46.7 -38.1
133	%	94.5 13.9	95.3 41.2	98.5 18.8	67.9 6.1	86.9 8.3	73.6 -15.6	10.5 153.6	113.3 7.1	102.9 5.3	105.2 16.9	59.0 -6.2				
ULT	%	94.5 13.9	94.9 26.2	96.1 23.6	89.0 19.8	88.6 17.3	86.1 11.2	75.3 12.4	80.1 11.4	84.5 8.3	86.4 9.2	84.1 8.2	96.1 23.6	76.1 -1.3	75.0 3.5	89.0 6.6
13	%	65.4 -4.1	61.3 -7.2	54.9 -18.0	45.6 -16.6	69.3 -14.8	55.7 -24.7	18.9 -18.2	78.6 -6.9	63.6 -17.6	60.0 -8.1	42.2 -26.0				
ULT	%	65.4 -4.1	63.3 -5.6	60.5 -9.7	56.8 -11.2	59.3 -12.1	58.7 -14.3	53.0 -14.5	56.2 -13.3	58.0 -14.0	58.7 -13.9	57.3 -14.8	60.5 -9.7	56.9 -18.7	56.7 -13.4	55.3 -16.9
14	%	115.7 13.0	97.6 12.2	121.8 6.8	107.0 -5.8	111.6 -5.5	122.1 -1.6	50.2 -1.2	106.1 -5.0	112.2 -5.6	106.2 -9.0	73.2 -18.2				
ULT	%	115.7 13.0	106.7 12.6	111.7 10.5	110.5 6.0	110.8 3.5	112.6 2.5	103.7 2.3	104.0 1.3	107.6 -0.8	107.5 -1.6	104.6 -2.8	111.7 10.5	113.6 -4.2	96.0 -6.2	97.2 -10.3
15	%	130.9 5.1	123.8 8.3	135.8 6.7	128.4 6.0	131.0 7.4	114.3 4.4	134.0 9.4	130.7 7.5	122.8 -6.0	113.7 -8.0	91.5 -20.3				
ULT	%	130.9 5.1	127.4 6.6	130.2 6.7	129.7 6.5	130.0 6.7	127.4 6.3	128.3 6.8	128.6 6.9	127.4 4.7	126.1 3.5	123.3 1.7	130.2 6.7	124.6 6.0	129.0 5.3	109.4 -11.1
16	%	80.4 2.5	83.8 11.4	99.9 12.7	90.5 7.4	98.5 4.7	81.4 6.1	68.0 5.1	86.3 3.5	100.9 2.6	99.1 4.8	91.8 2.2				
ULT	%	80.4 2.5	82.1 6.9	88.1 9.0	88.7 8.6	90.6 7.7	89.1 7.5	86.1 7.2	86.1 6.7	88.4 5.9	89.4 5.8	89.6 5.4	88.1 9.0	90.2 6.0	82.9 3.8	97.2 3.2
17	%	91.2 16.8	80.8 8.9	93.4 17.5	82.6 12.2	97.0 14.0	103.6 11.0	27.2 -17.1	101.9 7.0	96.9 -3.3	92.2 1.0	63.3 -11.9				
ULT	%	91.2 16.8	86.0 12.9	88.5 14.5	87.0 13.9	89.0 14.0	91.4 13.4	82.3 11.5	84.7 10.8	86.8 6.5	87.3 6.0	85.3 4.7	88.5 14.5	94.4 12.4	74.2 -3.5	84.2 -4.2
181-4	%	131.0 11.4	125.3 10.3	137.9 10.5	130.6 10.6	120.3 5.0	113.3 7.5	120.0 8.9	113.7 7.9	122.3 5.4	115.4 -1.6	114.7 -2.3				
ULT	%	131.0 11.4	128.2 10.9	131.4 10.7	131.2 10.7	129.0 9.6	126.4 9.3	125.5 9.2	124.0 9.1	123.2 8.4	122.5 7.5	121.9 6.6	131.4 10.7	121.4 7.7	117.2 7.6	117.5 0.5

TAULU 1:  
TEOLLISUUSTUOTANNON VOLYYMI-INDEKSI V. 1995  
INDUSTRIPRODUKTIONS VOLYMINDEX ÅR 1995

TOL NI	NELJÄNNEKSET KVARTAL																
	TAMMI JAN	HELMI FEBR	MAALIS MARS	HUHTI APRIL	TOUKO MAJ	KESÄ JUNI	HEINÄ JULI	ELO AUG	SYYS SEPT	LOKA OKTOB	MARRAS NOVEMB	JOULU DEC	I	II	III	IV	
185-9	107.7	104.1	118.7	93.8	113.0	108.4	62.7	101.4	100.9	109.4	101.7	85.3					
%	8.1	3.0	4.7	-4.6	2.0	-6.6	3.9	-2.2	-3.0	0.2	-7.5	-15.5					
ULT	107.7	105.9	110.2	106.1	107.5	107.6	101.2	101.2	101.2	102.0	102.0	100.6	110.2	105.1	88.4	98.8	
%	8.1	5.6	5.2	2.9	2.7	1.0	1.3	0.8	0.4	0.4	-0.4	-1.6	5.2	-3.1	-1.1	-7.4	
18	121.1	116.3	129.8	114.9	117.2	111.2	95.6	108.5	110.7	116.8	109.6	102.2					
%	10.2	7.4	8.1	4.8	3.8	1.2	7.5	3.6	2.2	3.3	-4.0	-7.4					
ULT	121.1	118.7	122.4	120.5	119.8	118.4	115.2	114.3	113.9	114.2	113.8	112.8	122.4	114.4	104.9	109.5	
%	10.2	8.8	8.6	7.6	6.9	5.9	6.1	5.8	5.4	5.2	4.3	3.3	8.6	3.2	4.3	-2.7	
191	122.1	108.7	133.7	97.3	103.0	128.9	125.8	123.5	125.0	124.1	126.3	118.4					
%	4.0	2.9	7.4	-17.6	-19.7	-6.4	-3.9	5.1	-1.3	-2.5	-4.9	-1.2					
ULT	122.1	115.4	121.5	115.4	113.0	115.6	117.1	117.9	118.7	119.2	119.9	119.7	121.5	109.8	124.8	122.9	
%	4.0	3.5	4.9	-0.8	-4.9	-5.2	-5.0	-3.8	-3.5	-3.4	-3.5	-3.3	4.9	-14.3	-0.2	-2.9	
192	66.1	61.3	87.9	72.5	114.8	112.8	108.6	110.7	107.0	108.1	96.3	49.4					
%	11.4	-4.8	10.9	-1.1	-0.9	2.0	-0.5	-4.5	4.1	18.0	-4.3	-21.7					
ULT	66.1	63.7	71.8	72.0	80.5	85.9	89.1	91.8	93.5	95.0	95.1	91.3	71.8	100.0	108.8	84.6	
%	11.4	3.0	6.0	4.1	2.6	2.5	2.0	0.9	1.3	3.0	2.3	0.9	6.0	0.1	-0.4	-0.6	
19	119.3	106.8	132.7	98.8	111.3	132.0	129.2	127.9	127.5	128.0	127.5	111.7					
%	4.5	2.0	7.5	-15.0	-16.0	-5.0	-3.3	3.4	-0.5	0.2	-4.7	-3.0					
ULT	119.3	113.0	119.6	114.4	113.8	116.8	118.6	119.7	120.6	121.3	121.9	121.1	119.6	114.0	128.2	122.4	
%	4.5	3.3	4.8	-0.2	-3.7	-4.0	-3.9	-3.0	-2.7	-2.4	-2.6	-2.6	4.8	-11.8	-0.2	-2.5	
211	134.1	135.1	153.5	128.4	154.9	140.6	79.2	155.5	146.1	158.8	151.8	117.4					
%	7.0	36.8	5.1	8.1	4.4	7.8	461.8	11.4	-2.3	4.9	0.2	-8.0					
ULT	134.1	134.6	140.9	137.8	141.2	141.1	132.3	135.2	136.4	138.6	139.8	137.9	140.9	141.3	126.9	142.7	
%	7.0	20.1	14.2	12.7	10.8	10.3	18.4	17.3	14.6	13.4	11.9	10.3	14.2	6.6	25.5	-0.6	
212	106.8	99.9	114.5	98.5	115.4	109.6	55.2	102.4	107.7	117.8	108.2	74.0					
%	19.7	5.9	4.3	-2.4	0.9	5.5	-0.5	-2.6	-4.4	-0.1	-2.5	-11.1					
ULT	106.8	103.3	107.0	104.9	107.0	107.4	100.0	100.3	101.1	102.8	103.3	100.8	107.0	107.8	88.4	100.0	
%	19.7	12.6	9.5	6.5	5.2	5.3	4.8	3.8	2.7	2.4	1.9	1.0	9.5	1.3	-2.9	-3.9	
21	110.7	105.0	120.2	102.8	121.2	114.1	58.7	110.1	113.3	123.8	114.6	80.3					
%	17.3	10.6	4.4	-0.6	1.5	5.9	18.6	-0.0	-4.0	0.8	-2.0	-10.4					
ULT	110.7	107.9	112.0	109.7	112.0	112.3	104.7	105.4	106.2	108.0	108.6	106.2	112.0	112.7	94.0	106.2	
%	17.3	13.9	10.3	7.6	6.2	6.1	7.0	6.1	4.8	4.3	3.6	2.6	10.3	2.3	1.6	-3.3	
221	124.9	102.4	142.3	112.0	123.9	122.5	75.9	120.2	131.3	121.8	130.8	92.4					
%	26.4	5.0	-2.5	-6.9	-1.7	-2.9	12.3	7.7	-0.7	7.2	-11.6	-4.9					
ULT	124.9	113.7	123.2	120.4	121.1	121.3	114.8	115.5	117.3	117.7	118.9	116.7	123.2	119.5	109.1	115.0	
%	26.4	15.8	8.0	4.1	2.9	1.9	2.8	3.4	2.9	3.3	1.6	1.1	8.0	-3.8	5.1	-3.8	

TAULU 1:  
TEOLLISUUSTUOTANNON VOLYYMI-INDEKSI V. 1995  
INDUSTRIPRODUKTIONS VOLYMINDEX ÅR 1995

NELJÄNNEKSET  
KVARTAL

TOL NI	TAMMI JAN	HELMI FEBR	MAALIS MARS	HUHTI APRIL	TOUKO MAJ	KESÄ JUNI	HEINÄ JULI	ELO AUG	SYYS SEPT	LOKA OKTOB	MARRAS NOVEMB	JOULU DEC	I	II	III	IV
222	%	64.5 -30.7	68.6 -10.7	93.5 -12.3	78.4 -24.2	79.4 -28.8	11.4 -19.7	79.0 -22.4	85.7 -19.9	84.3 -18.1	85.4 -21.3	51.9 -40.5				
ULT	%	64.5 -30.7	66.5 -21.6	75.5 -18.0	76.3 -19.7	76.9 -21.8	67.4 -20.7	68.8 -20.9	70.7 -20.8	72.1 -20.5	73.3 -20.6	71.5 -22.1	75.5 -18.0	77.8 -23.1	58.7 -21.0	73.9 -25.8
223-9	%	58.0 20.6	56.8 18.7	65.8 6.5	66.4 1.9	81.7 -3.4	83.5 0.5	86.9 5.1	80.0 -9.1	82.2 1.4	65.9 -8.6	47.7 -2.9				
ULT	%	58.0 20.6	57.4 19.7	60.2 14.5	61.8 10.8	65.7 6.9	68.7 5.5	69.4 5.9	70.6 3.7	71.7 3.5	71.2 2.3	69.2 2.0	60.2 14.5	77.2 -0.5	74.3 0.5	65.3 -3.2
22	%	66.4 16.7	63.0 13.3	76.7 2.8	72.6 -2.0	86.6 -5.0	87.7 -1.0	90.4 3.5	86.5 -8.4	87.1 0.9	74.9 -10.3	53.3 -6.8				
ULT	%	66.4 16.7	64.7 15.0	68.7 10.1	69.7 6.7	73.1 3.7	75.5 2.7	74.9 3.4	76.2 1.8	77.3 1.7	77.0 0.5	75.1 0.0	68.7 10.1	82.3 -2.7	77.5 0.0	71.8 -5.2
231	%	157.4 13.6	142.0 13.1	161.1 9.1	144.7 5.1	143.8 3.9	132.8 -1.6	121.5 -3.8	135.9 -1.2	149.8 5.4	151.2 3.9	137.8 -1.8				
ULT	%	157.4 13.6	149.7 13.4	153.5 11.8	151.3 10.1	149.8 8.9	146.9 7.2	138.2 5.8	138.0 5.0	139.1 5.0	140.2 4.9	140.0 4.3	153.5 11.8	140.4 2.5	120.0 -0.0	146.3 2.5
232	%	124.3 15.4	103.7 8.4	129.4 1.9	110.4 2.6	102.6 -14.1	89.4 -22.6	114.3 18.4	124.3 3.9	135.4 16.5	122.5 -0.4	103.9 0.9				
ULT	%	124.3 15.4	114.0 12.1	119.1 8.2	117.0 6.8	114.1 2.3	110.0 -2.0	107.2 1.3	109.1 1.6	111.7 3.2	112.7 2.8	111.9 2.7	119.1 8.2	100.8 -11.8	107.3 9.8	120.6 5.7
233	%	129.7 56.6	119.3 39.4	152.3 31.3	127.7 44.5	149.5 41.4	146.2 25.8	161.7 35.1	141.6 17.0	153.9 30.5	149.5 19.0	95.3 -3.2				
ULT	%	129.7 56.6	124.5 47.9	133.8 41.1	132.2 41.9	135.7 41.8	137.5 38.7	127.2 57.5	128.8 34.6	131.4 34.1	133.0 32.4	129.9 29.5	133.8 41.1	141.2 36.4	111.6 25.6	132.9 16.6
23	%	145.3 17.7	129.2 14.6	151.8 9.8	133.6 8.1	133.9 3.5	123.3 -3.3	124.8 6.0	133.6 2.2	146.6 10.8	143.5 4.7	123.6 -1.4				
ULT	%	145.3 17.7	137.2 16.2	142.1 13.9	140.0 12.4	138.8 10.6	136.2 8.2	128.8 7.9	129.3 7.2	131.1 7.6	132.2 7.5	131.5 6.6	142.1 15.9	130.3 2.7	115.6 4.9	137.9 4.8
24	%	97.8 22.4	92.3 11.0	107.8 11.0	94.4 -0.7	115.7 4.5	108.4 1.4	105.5 6.1	117.7 2.5	117.4 7.9	123.9 8.9	70.2 -4.2				
ULT	%	97.8 22.4	95.1 16.6	99.3 14.5	98.1 10.4	101.6 9.0	102.7 7.6	97.1 8.2	99.3 7.4	101.2 7.4	103.2 7.6	100.5 6.8	99.3 14.5	106.2 1.9	92.6 6.9	103.8 5.3
251	%	99.6 24.6	94.6 31.5	122.0 18.6	103.6 28.4	126.8 34.5	131.3 18.1	118.7 31.0	112.1 -0.2	112.9 2.9	128.8 15.5	124.9 -5.5				
ULT	%	99.6 24.6	97.1 27.9	105.4 24.2	105.0 25.2	109.3 27.2	113.0 25.3	108.4 27.7	108.8 23.7	109.2 21.2	111.0 20.6	112.2 17.6	105.4 24.2	120.6 26.4	100.5 20.2	122.2 3.7

TAULU 1:  
TEOLLISUUSTUOTANNON VOLYYMI-INDEKSI V. 1995  
INDUSTRIPRODUKTIONS VOLYMINDEX ÅR 1995

TOL NI	NELJÄNNEKSET KVARTAL																	
	TAMMI JAN	HELMI FEBR	MAALIS MARS	HUHTI APRIL	TOUKO MAJ	KESÄ JUNI	HEINÄ JULI	ELO AUG	SYYS SEPT	LOKA OKTOB	MARRAS NOVEMB	JOULU DEC	I	II	III	IV		
252	%	95.7 62.0	106.0 28.2	96.6 24.9	110.6 32.2	113.7 43.1	120.5 33.4	66.1 7.0	95.6 18.6	101.6 20.4	109.2 15.0	120.3 41.2	114.3 23.6	120.3 41.2				
ULT	%	95.7 62.0	100.8 42.3	99.4 36.2	102.2 35.1	104.5 36.7	107.2 36.1	101.3 32.7	100.6 30.9	100.7 29.6	101.6 27.9	104.2 28.6	102.7 27.4	104.2 28.6	99.4 36.2	114.9 36.0	87.8 16.1	114.6 26.1
25	%	94.1 39.8	98.1 28.6	107.4 20.6	108.0 28.2	119.6 37.8	129.4 25.3	72.8 21.8	109.4 23.1	109.5 10.0	113.0 9.2	119.5 13.9	120.3 21.2	119.5 13.9				
ULT	%	94.1 39.8	96.1 33.9	99.9 28.8	101.9 28.6	105.4 30.6	109.4 29.5	104.2 28.7	104.8 28.0	105.4 25.6	106.1 23.6	108.4 22.4	107.4 23.4	108.4 22.4	99.9 28.8	119.0 30.2	97.3 17.5	117.6 14.7
261-3	%	228.1 54.4	225.4 35.4	306.8 38.9	232.1 25.4	287.8 37.3	276.6 41.0	139.0 37.8	277.6 33.3	314.0 27.8	306.8 29.4	303.7 24.6	332.0 26.1	303.7 24.6				
ULT	%	228.1 54.4	226.7 44.3	253.4 42.1	248.1 37.8	256.0 37.7	259.5 38.3	242.2 38.2	246.7 37.5	254.1 36.1	259.4 35.3	269.2 33.2	266.0 34.2	269.2 33.2	253.4 42.1	265.5 34.8	243.5 31.7	314.2 26.7
264	%	106.2 17.5	107.9 20.3	108.5 9.3	105.3 17.5	131.9 23.1	119.7 12.1	104.2 51.8	109.1 17.3	120.3 4.4	128.2 13.9	118.2 0.7	152.8 3.3	118.2 0.7				
ULT	%	106.2 17.5	107.0 18.9	107.5 15.5	107.0 16.0	112.0 17.6	113.2 16.6	112.0 20.3	111.6 19.9	112.6 17.8	114.1 17.4	117.7 14.1	117.6 15.5	117.7 14.1	107.5 15.5	119.0 17.6	111.2 20.5	133.1 5.6
26	%	209.4 50.7	207.3 34.1	276.3 36.7	212.6 24.8	263.8 36.1	252.5 38.4	133.6 39.3	251.7 32.1	284.2 26.0	279.3 28.2	275.1 22.7	304.5 24.0	275.1 22.7				
ULT	%	209.4 50.7	208.3 41.9	231.0 39.8	226.4 35.9	233.9 36.0	237.0 36.4	222.2 36.6	225.9 36.0	232.4 34.5	237.1 33.8	245.9 31.6	243.2 32.6	245.9 31.6	231.0 39.8	243.0 33.3	223.2 30.7	286.3 24.9
271-2	%	134.3 30.4	156.6 32.0	186.1 38.0	148.3 26.1	169.5 24.9	155.9 2.9	85.3 12.4	169.6 33.3	154.3 6.8	168.5 27.4	129.8 7.7	168.6 14.6	129.8 7.7				
ULT	%	134.3 30.4	145.5 31.3	159.0 33.8	156.4 31.9	159.0 30.3	158.5 24.9	148.0 23.8	150.7 25.0	151.1 22.6	152.8 23.1	152.2 21.1	154.3 22.2	152.2 21.1	159.0 33.8	157.9 17.0	136.4 17.7	155.6 16.7
273,5,9	%	80.7 -2.1	68.5 -10.9	83.4 -11.4	67.2 -16.0	87.9 1.8	76.4 5.5	40.1 16.3	102.5 31.2	95.1 14.6	86.7 1.7	76.0 5.0	108.4 22.4	76.0 5.0				
ULT	%	80.7 -2.1	74.6 -6.4	77.5 -8.2	74.9 -10.1	77.5 -7.7	77.3 -5.7	72.0 -4.3	75.8 0.3	78.0 2.0	78.9 2.0	81.1 4.2	81.5 4.1	81.1 4.2	77.5 -8.2	77.2 -3.0	79.3 21.5	90.3 10.1
274	%	73.0 46.1	79.9 58.6	79.0 40.9	66.3 11.1	82.4 35.5	90.3 5.5	29.8 -27.4	66.5 -4.5	86.7 1.3	91.6 5.6	83.0 9.7	98.6 19.1	83.0 9.7				
ULT	%	73.0 46.1	76.4 52.4	77.3 48.3	74.6 38.0	76.1 37.5	78.5 29.9	71.5 24.1	70.9 19.9	72.7 17.0	74.6 15.5	77.3 15.3	76.8 15.9	77.3 15.3	77.3 48.3	79.7 16.0	61.0 -6.8	91.1 11.4
27	%	100.4 26.3	109.5 28.8	124.9 27.8	100.9 14.0	120.1 22.7	114.7 4.0	55.4 2.3	117.8 23.1	116.9 6.6	122.7 16.3	101.0 7.8	130.2 17.2	101.0 7.8				
ULT	%	100.4 26.3	104.9 27.6	111.6 27.7	108.9 24.2	111.2 23.9	111.7 20.0	103.7 18.4	105.5 19.0	106.7 17.4	108.3 17.2	109.5 16.5	110.3 17.2	109.5 16.5	111.6 27.7	111.9 13.1	96.7 11.8	118.0 14.0

TAULU 1:  
TEOLLISUUSTUOTANNON VOLYYMI-INDEKSI V. 1995  
INDUSTRIPRODUKTIONS VOLYMINDEKSI ÅR 1995

NELJÄNNEKSET  
KVARTAL

TOL NI	TAMMI JAN	HELMI FEBR	MAALIS MARS	HUHTI APRIL	TOUKO MAJ	KESÄ JUNI	HEINÄ JULI	ELO AUG	SYYS SEPT	LOKA OKTOB	MARRAS NOVEMB	JOULU DEC	I	II	III	IV
29	%	96.4 3.9	95.3 14.8	104.1 -2.6	88.3 -16.4	108.9 0.1	108.3 -9.4	97.5 -9.5	103.9 -16.8	115.8 -13.6	117.4 -16.2	74.0 -28.3				
ULT	%	96.4 3.9	95.9 9.1	98.6 4.7	96.0 -1.1	98.6 -0.8	100.2 -2.5	90.1 -6.1	91.6 -7.6	94.0 -8.4	96.2 -9.3	94.3 -10.9	98.6 4.7	101.8 -8.5	74.4 -19.0	102.4 -18.6
D	%	113.2 17.1	109.2 14.8	128.8 16.2	113.4 7.1	127.2 10.8	123.3 9.5	121.7 9.5	125.5 3.5	129.3 6.3	129.4 5.2	108.4 -0.2				
ULT	%	113.2 17.1	111.2 16.0	117.1 16.1	116.1 13.7	118.4 13.1	119.2 12.5	115.1 11.9	116.3 10.8	117.6 10.3	118.7 9.8	117.8 9.0	117.1 16.1	121.3 9.2	110.5 7.5	122.4 3.9
31	%	143.1 3.2	122.5 -9.3	129.6 -1.6	118.4 2.6	104.4 5.4	89.7 -3.7	93.1 -6.1	100.6 -5.7	110.8 -7.5	123.0 -2.5	135.3 1.1				
ULT	%	143.1 3.2	132.8 -3.0	131.8 -2.5	128.4 -1.4	123.6 -0.3	118.0 -0.7	111.4 -0.7	110.2 -1.2	110.3 -1.9	111.4 -2.0	113.4 -1.7	131.8 -2.5	104.2 1.6	94.7 -2.5	123.0 -2.8
34	%	101.6 3.7	90.4 -1.8	102.7 -2.5	96.3 -5.3	100.5 -3.0	95.2 3.4	104.8 2.0	97.8 -0.0	102.8 2.0	100.1 3.3	102.6 3.9				
ULT	%	101.6 3.7	96.0 1.0	98.2 -0.2	97.8 -1.5	98.3 -1.8	97.8 -1.0	98.0 -1.2	98.0 -1.1	98.5 -0.8	98.6 -0.4	99.0 -0.1	98.2 -0.2	97.3 -1.8	98.5 -1.3	101.9 3.1
E	%	140.3 3.3	120.3 -8.9	127.8 -1.6	116.9 2.2	104.2 4.8	90.0 -3.2	93.9 -5.5	100.4 -5.3	110.2 -6.9	121.4 -2.1	133.0 1.3				
ULT	%	140.3 3.3	130.3 -2.7	129.4 -2.3	126.3 -1.3	121.9 -0.3	116.6 -0.7	110.5 -0.7	109.4 -1.2	109.5 -1.8	110.5 -1.8	112.4 -1.5	129.4 -2.3	103.7 1.4	95.0 -2.3	121.6 -2.4
C,D,E	%	115.1 15.2	109.6 11.9	128.0 14.3	113.1 6.5	124.4 9.9	120.3 8.3	120.3 8.7	122.6 2.8	126.8 5.2	127.9 4.5	110.0 -0.0				
ULT	%	115.1 15.2	112.4 13.6	117.6 13.8	116.5 12.0	118.1 11.5	118.4 11.0	114.6 10.5	115.5 9.5	116.6 9.0	117.7 8.6	117.0 7.8	117.6 13.8	119.3 8.3	109.6 6.5	121.6 3.3
14, 15	%	126.2 7.3	115.6 9.3	131.5 6.8	121.7 2.5	124.9 3.5	116.8 2.4	123.1 3.8	125.1 -3.6	119.5 -5.9	111.4 -8.3	85.9 -19.7				
ULT	%	126.2 7.3	120.9 8.2	124.4 7.7	123.8 6.4	124.0 5.8	122.8 5.2	121.0 5.3	121.4 4.2	121.2 3.1	120.3 2.0	117.5 0.4	124.4 7.7	121.1 2.8	118.7 2.2	105.6 -10.9
23-27	%	131.4 36.7	130.7 26.8	158.7 25.4	135.2 19.2	157.9 26.8	155.3 21.3	148.4 22.6	159.5 14.5	161.8 17.7	172.3 18.7	150.4 13.9				
ULT	%	131.4 36.7	131.1 31.6	140.3 29.2	139.0 26.6	142.8 26.7	144.9 25.7	137.9 25.1	140.3 23.6	142.4 22.9	145.2 22.5	145.6 21.7	140.3 29.2	149.4 22.5	131.1 19.4	161.5 16.8
MUU D	%	94.3 6.4	90.3 6.6	105.1 12.0	93.6 -1.5	104.9 -0.2	101.7 1.3	101.0 0.3	99.9 -3.9	108.7 1.2	104.2 -2.4	85.9 -6.2				
ULT	%	94.3 6.4	92.3 6.5	96.6 8.4	95.8 5.8	97.6 4.5	98.3 3.9	95.6 3.4	96.1 2.5	97.3 2.3	98.0 1.9	97.0 1.2	96.6 8.4	100.1 -0.1	91.6 -0.4	99.6 -2.3

TAULU 1:  
TEOLLISUUSTUOTANNON VOLYYMI-INDEKSI V. 1995  
INDUSTRIPRODUKTIONS VOLYMINDEX ÅR 1995

TOL NI	NELJÄNNEKSET KVARTAL															
	TAMMI JAN	HELMI FEBR	MAALIS MARS	HUHTI APRIL	TOUKO MAJ	KESÄ JUNI	HEINÄ JULI	ELO AUG	SYYS SEPT	LOKA OKTOB	MARRAS NOVEMB	JOULU DEC	I	II	III	IV
I	148.6 46.2	149.6 32.8	175.2 30.5	156.3 26.8	182.5 35.1	187.3 31.1	100.8 30.8	170.7 29.2	181.6 19.2	182.8 20.1	198.1 23.8	178.3 22.0				
ULT %	148.6 46.2	149.1 39.1	157.8 35.8	157.4 33.5	162.4 33.8	166.6 33.3	157.2 33.1	158.9 32.5	161.4 30.7	163.5 29.4	166.7 28.8	167.6 28.2	157.8 35.8	175.3 31.1	151.0 25.4	186.4 22.0
CO	93.3 3.4	90.0 3.2	104.5 11.8	92.1 -2.6	103.2 1.2	99.2 -0.1	68.4 1.1	98.3 -0.7	98.5 -5.1	107.5 -0.1	106.7 -2.1	91.0 -5.4				
ULT %	93.3 3.4	91.6 3.3	95.9 6.2	94.9 4.0	96.6 3.4	97.0 2.8	92.9 2.6	93.6 2.1	94.2 1.2	95.5 1.1	96.5 0.7	96.1 0.2	95.9 6.2	98.2 -0.4	88.4 -1.9	101.8 -2.4
R	114.3 12.0	106.8 8.6	125.1 9.0	110.3 3.7	118.6 5.8	113.2 4.2	87.6 5.9	116.4 5.9	118.2 -0.0	120.2 1.6	119.9 0.5	102.2 -5.3				
ULT %	114.3 12.0	110.5 10.4	115.4 9.9	114.1 8.3	115.0 7.8	114.7 7.2	110.8 7.0	111.5 6.9	112.3 6.0	113.1 5.5	113.7 5.0	112.7 4.2	115.4 9.9	114.0 4.6	107.4 3.6	114.1 -1.0

TAULU 2:  
TEOLLISUUSTUOTANNON VOLYYMI-INDEKSI TYÖPÄIVÄÄ KOHTI V. 1995  
INDUSTRIPRODUKTIONS VOLYMINDEKSI PER ARBETSDAG ÅR 1995

NELJÄNNEKSET  
KVARTAL

TOL NI	TAMMI JAN	HELMI FEBR	MAALIS MARS	HUHTI APRIL	TOUKO MAJ	KESÄ JUNI	HEINÄ JULI	ELO AUG	SYYS SEPT	LOKA OKTOB	MARRAS NOVEMB	JOULU DEC	I	II	III	IV
07	86.8 -2.1	84.5 6.4	96.0 14.1	82.5 -17.2	70.8 -4.9	80.8 -3.9	80.8 -10.5	61.6 -17.5	92.6 -1.6	65.3 7.3	76.5 -5.0	75.5 5.5				
ULT %	86.8 -2.1	85.7 1.9	89.1 6.0	87.5 -0.6	84.1 -1.3	83.6 -1.7	83.2 -3.1	80.5 -4.7	81.8 -4.3	80.2 -3.4	79.8 -3.6	79.5 -2.9	89.1	78.0	78.3	72.4
09	62.8 -7.3	61.2 12.2	67.1 3.6	67.7 4.8	69.9 -32.3	146.4 -4.8	200.7 -26.6	248.5 41.2	75.5 -3.4	70.9 12.6	70.8 11.3	56.6 -8.1				
ULT %	62.8 -7.3	62.0 1.4	63.7 2.2	64.7 2.8	65.7 -7.4	79.2 -6.6	96.5 -13.6	115.5 -3.5	111.1 -3.5	107.1 -2.6	103.8 -1.8	99.8 -2.2	63.7	94.7	174.9	66.1
C	69.7 -5.5	68.0 10.1	75.5 7.2	72.0 -3.7	70.2 -26.1	127.3 -4.6	165.9 -24.7	194.2 32.5	80.4 -2.8	69.3 11.1	72.4 5.7	62.1 -5.7				
ULT %	69.7 -5.5	68.9 1.6	71.1 3.5	71.3 1.6	71.1 -5.4	80.5 -5.2	92.7 -11.1	105.3 -3.8	102.6 -3.7	99.2 -2.8	96.8 -2.3	93.9 -2.3	71.1	89.8	146.8	67.9
111-5	96.1 -6.6	98.2 -1.6	100.9 18.8	112.1 -4.1	111.2 -3.7	113.8 -0.1	85.1 -0.5	98.3 -2.3	105.3 -0.8	124.6 0.1	121.8 -2.4	105.8 0.8				
ULT %	96.1 -6.6	97.1 -4.1	98.4 2.6	101.8 0.7	103.7 -0.3	105.4 -0.3	102.5 -0.3	102.0 -0.5	102.3 -0.6	104.6 -0.5	106.1 -0.7	106.1 -0.6	98.4	112.4	96.2	117.4
116	102.6 6.9	95.7 8.1	96.3 43.3	101.7 -1.3	113.5 7.0	126.2 15.5	120.5 12.2	100.4 -11.4	85.6 -2.7	93.4 7.0	89.4 -9.5	101.9 2.5				
ULT %	102.6 6.9	99.1 7.5	98.2 17.0	99.1 11.7	102.0 10.6	106.0 11.5	108.1 11.7	107.1 8.3	104.7 7.2	103.6 7.2	102.3 5.7	102.3 5.4	98.2	113.8	102.2	94.9
117	59.0 -26.9	52.4 1.5	78.8 42.7	85.4 -6.0	107.6 7.8	102.8 -2.1	16.3 19.3	95.0 -12.9	81.0 -31.9	80.6 -17.3	80.8 10.4	57.5 -32.1				
ULT %	59.0 -26.9	55.7 -15.8	63.4 1.4	68.9 -1.0	76.6 1.3	81.0 0.6	71.8 1.1	74.7 -1.4	75.4 -6.4	75.9 -7.7	76.3 -6.2	74.8 -8.5	63.4	98.6	64.1	72.9
119	129.7 54.7	93.3 25.7	112.0 30.5	116.0 13.1	132.0 18.1	117.1 11.7	121.9 28.6	123.0 25.0	106.3 4.7	104.0 15.8	108.5 47.1	125.6 16.1				
ULT %	129.7 54.7	111.5 41.1	111.7 37.4	112.8 30.2	116.6 27.2	116.7 24.3	117.5 25.0	118.1 25.0	116.8 22.6	115.6 21.9	114.9 23.7	115.8 23.0	111.7	121.7	117.1	112.7
11	96.4 -2.6	94.9 1.3	99.0 24.3	108.4 -3.0	111.3 -0.7	114.8 2.7	89.7 3.7	98.9 -3.6	99.6 -2.7	114.7 0.8	112.3 -2.0	102.9 0.5				
ULT %	96.4 -2.6	95.6 -0.7	96.8 6.6	99.7 3.8	102.0 2.8	104.1 2.8	102.1 2.9	101.7 2.1	101.4 1.5	102.8 1.4	103.6 1.1	103.6 1.0	96.8	111.5	96.1	110.0
12	89.4 5.9	97.5 11.2	95.4 5.8	101.1 3.1	98.8 -5.7	95.1 -6.6	33.2 -4.1	96.4 -4.9	95.0 -11.9	90.9 -10.5	96.0 -8.5	77.4 -6.8				
ULT %	89.4 5.9	93.4 8.6	94.1 7.6	95.8 6.4	96.4 3.7	96.2 1.8	87.2 1.5	88.4 0.6	89.1 -1.1	89.3 -2.1	89.9 -2.8	88.8 -3.1	94.1	98.4	74.8	88.1

TAULU 2:  
TEOLLISUUSTUOTANNON VOLYYMI-INDEKSI TYÖPÄIVÄÄ KOHTI V. 1995  
INDUSTRIPRODUKTIONS VOLYMINDEKSI PER ARBETSDAG ÅR 1995

TOL NI		NELJÄNNEKSET KVARTAL															
		TAMMI JAN	HELMI FEBR	MAALIS MARS	HUHTI APRIL	TOUKO MAJ	KESÄ JUNI	HEINÄ JULI	ELO AUG	SYYS SEPT	LOKA OKTOB	MARRAS NOVEMB	JOULU DEC	I	II	III	IV
131	%	58.8 -12.4	56.0 -18.7	39.2 -30.5	43.8 -19.6	66.6 -19.9	51.1 -27.6	22.5 -21.9	66.3 -9.3	67.8 -18.1	52.3 -28.3	47.0 -14.6	52.3 -22.7				
	ULT %	58.8 -12.4	57.4 -15.6	51.3 -20.0	49.5 -19.9	52.9 -19.9	52.6 -21.2	48.3 -21.3	50.6 -19.5	52.5 -19.3	52.5 -20.3	52.0 -19.9	51.2 -20.1	51.3 -20.0	53.9 -22.4	52.2 -15.2	47.4 -22.5
132	%	57.1 -32.1	56.9 -26.5	58.8 -25.0	60.1 -20.1	51.9 -31.1	56.7 -29.7	4.0 -76.6	45.7 -38.6	49.6 -31.8	48.2 -35.0	50.0 -38.4	42.2 -40.1				
	ULT %	57.1 -32.1	57.0 -29.4	57.6 -27.9	58.2 -26.1	57.0 -27.0	56.9 -27.5	49.4 -29.2	48.9 -30.5	49.0 -30.6	48.9 -31.1	49.0 -31.8	48.4 -32.5	57.6 -27.9	56.2 -27.0	33.1 -39.6	46.8 -37.9
133	%	94.7 7.7	100.3 40.1	90.1 17.9	76.2 10.9	87.1 7.4	73.8 -16.3	10.5 151.7	103.6 6.2	101.6 -2.0	98.4 -0.2	100.6 16.0	66.3 3.0				
	ULT %	94.7 7.7	97.5 22.2	95.0 20.8	90.3 18.6	89.7 16.2	87.0 10.2	76.1 11.4	79.5 10.5	82.0 8.6	83.6 7.5	85.2 8.4	83.6 8.0	95.0 20.8	79.0 -0.4	71.9 5.0	88.4 6.2
13	%	65.5 -9.4	64.5 -7.9	50.3 -18.6	51.1 -12.9	69.4 -15.5	55.8 -25.2	18.9 -18.8	71.9 -7.6	72.9 -15.2	60.8 -22.0	57.4 -8.8	47.2 -18.8				
	ULT %	65.5 -9.4	65.0 -8.7	60.1 -11.7	57.9 -11.9	60.2 -12.8	59.4 -15.0	53.7 -15.2	55.9 -14.1	57.8 -14.2	58.1 -15.1	58.1 -14.6	57.1 -14.9	60.1 -11.7	58.8 -18.2	54.6 -12.5	55.1 -16.9
14	%	115.4 7.5	102.5 11.4	111.8 6.1	120.9 -1.9	111.3 -6.4	122.9 -2.1	50.0 -1.9	97.3 -5.7	131.5 -5.6	107.1 -10.1	101.8 -9.7	82.7 -11.2				
	ULT %	115.4 7.5	109.0 9.3	109.9 8.2	112.7 5.3	112.4 2.7	114.2 1.8	105.0 1.6	104.0 0.7	107.1 -0.2	107.1 -1.3	106.6 -2.1	104.6 -2.8	109.9 8.2	118.4 -3.4	92.9 -5.0	97.2 -10.3
15	%	126.6 4.5	131.9 8.2	130.1 6.7	131.7 6.4	130.4 7.3	120.9 4.4	129.7 9.4	125.3 7.5	121.6 -0.5	118.3 -6.5	112.8 -8.1	98.1 -19.5				
	ULT %	126.6 4.5	129.2 6.4	129.5 6.5	130.1 6.4	130.2 6.6	128.6 6.3	128.8 6.7	128.3 6.8	127.6 6.0	126.7 4.7	125.4 3.5	123.1 1.6	129.5 6.5	127.7 6.0	125.5 5.4	109.8 -11.3
16	%	79.4 0.3	88.4 11.2	93.8 12.5	96.7 8.9	97.6 4.0	84.4 6.4	66.1 4.8	81.0 3.3	93.4 4.6	96.5 0.8	98.1 4.6	101.8 5.6				
	ULT %	79.4 0.3	83.9 5.7	87.2 8.0	89.6 8.3	91.2 7.3	90.0 7.2	86.6 6.9	85.9 6.5	86.8 6.3	87.7 5.6	88.7 5.5	89.8 5.5	87.2 8.0	92.9 6.4	80.2 4.2	98.8 3.7
17	%	91.4 10.4	85.0 8.0	85.4 16.6	92.7 17.3	97.2 13.1	103.8 10.2	27.3 -17.8	93.3 6.2	93.6 -5.4	92.7 -8.4	88.2 0.2	71.1 -3.3				
	ULT %	91.4 10.4	88.2 9.2	87.3 11.5	88.6 13.0	90.4 13.0	92.6 12.5	83.3 10.6	84.5 9.9	85.5 7.8	86.2 5.8	86.4 5.2	85.1 4.6	87.3 11.5	97.9 13.3	71.4 -2.6	84.0 -4.1
181-4	%	128.4 11.3	135.6 10.3	134.7 10.5	132.7 10.7	118.2 5.0	115.5 7.4	117.6 9.0	111.0 7.9	119.2 6.0	119.6 5.2	116.6 -1.6	114.0 -2.2				
	ULT %	128.4 11.3	132.0 10.7	132.9 10.6	132.8 10.7	129.9 9.6	127.5 9.2	126.1 9.2	124.2 9.1	123.7 8.7	123.3 8.4	122.7 7.4	121.9 6.6	132.9 10.6	122.1 7.8	115.9 7.6	116.8 0.4

TAULU 2:  
TEOLLISUUSTUOTANNON VOLYYMI-INDEKSI TYÖPÄIVÄÄ KOHTI V. 1995  
INDUSTRIPRODUKTIONS VOLYMINDEKX PER ARBEITSDAG ÅR 1995

TOL NI	NELJÄNNEKSET KVARTAL															
	TAMMI JAN	HELMI FEBR	MAALIS MARS	HUHTI APRIL	TOUKO MAJ	KESÄ JUNI	HEINÄ JULI	ELO AUG	SYYS SEPT	LOKA OKTOB	MARRAS NOVEMB	JOULU DEC	I	II	III	IV
185-9	107.7 2.7	109.8 2.3	109.2 3.9	104.7 -0.7	113.1 1.2	108.7 -7.3	62.6 3.2	93.4 -3.0	101.3 0.5	104.9 -4.7	97.6 -8.3	94.3 -7.7				
ULT	107.7 2.7	108.8 2.5	108.9 2.9	107.9 2.0	108.9 1.9	108.9 0.2	102.3 0.5	101.2 0.1	101.2 0.1	101.5 -0.4	101.2 -1.2	100.6 -1.7	108.9 2.9	108.8 -2.4	85.8 -0.2	98.9 -6.9
18	119.6 7.8	124.7 7.1	123.8 7.9	120.8 6.2	116.0 3.4	112.6 0.8	94.2 7.3	103.5 3.5	111.6 3.8	113.3 1.1	108.6 -4.2	105.6 -4.4				
ULT	119.6 7.8	122.1 7.5	122.7 7.6	122.2 7.3	121.0 6.5	119.6 5.6	116.0 5.8	114.4 5.5	114.1 5.3	114.0 4.9	113.5 4.0	112.9 3.3	122.7 7.6	116.5 3.5	103.1 4.7	109.2 -2.5
191	119.8 4.0	118.0 2.9	131.2 7.4	98.6 -17.6	101.1 -19.7	130.7 -6.4	123.4 -3.9	121.1 5.1	126.7 -1.3	121.7 -2.5	128.0 -4.9	116.2 -1.2				
ULT	119.8 4.0	118.9 3.4	123.0 4.8	116.9 -0.9	113.8 -4.8	116.6 -5.1	117.6 -4.9	118.0 -3.8	119.0 -3.5	119.3 -3.4	120.1 -3.5	119.7 -3.3	123.0 4.8	110.2 -14.2	123.8 -0.2	122.0 -3.0
192	66.1 5.3	64.4 -5.5	80.3 10.0	82.0 3.3	114.9 -1.7	112.8 1.2	108.6 -1.3	101.1 -5.2	107.1 8.2	103.2 11.8	92.0 -5.0	56.2 -13.7				
ULT	66.1 5.3	65.3 -0.4	70.3 3.3	73.2 3.3	81.5 1.9	86.8 1.7	89.9 1.2	91.3 0.3	93.0 1.2	94.0 2.3	93.9 1.6	90.7 0.7	70.3 3.3	103.2 0.6	105.6 0.4	83.8 -1.2
19	117.3 4.0	115.6 2.0	129.3 7.4	101.6 -14.4	109.5 -16.1	133.6 -5.1	127.1 -3.4	124.2 3.3	129.0 -0.0	125.2 -0.5	128.3 -4.8	110.8 -2.3				
ULT	117.3 4.0	116.4 3.0	120.7 4.5	115.9 -0.3	114.7 -3.8	117.8 -4.0	119.1 -3.9	119.8 -3.1	120.8 -2.7	121.2 -2.5	121.9 -2.7	121.0 -2.7	120.7 4.5	114.9 -11.6	126.8 -0.1	121.4 -2.6
211	134.4 1.1	142.2 35.7	140.4 4.3	143.6 13.0	155.1 3.6	140.9 7.0	79.3 458.3	142.2 10.4	146.3 1.5	151.9 -0.7	145.2 -0.6	132.2 -1.2				
ULT	134.4 1.1	138.3 16.3	139.0 12.0	140.1 12.2	143.1 10.2	142.8 9.7	133.7 17.7	134.8 16.7	136.1 14.6	137.6 12.7	138.3 11.3	137.8 10.4	139.0 12.0	146.5 7.6	122.6 28.1	143.1 -0.1
212	105.4 16.3	105.5 5.5	106.9 3.7	107.0 0.0	114.8 0.4	112.4 5.1	54.3 -0.9	95.6 -3.1	107.4 -2.3	112.7 -3.1	105.6 -3.1	81.7 -6.3				
ULT	105.4 16.3	105.4 10.6	105.9 8.2	106.2 6.0	107.9 4.8	108.7 4.8	100.9 4.4	100.2 3.4	101.0 2.7	102.2 2.0	102.5 1.5	100.8 1.0	105.9 8.2	111.4 1.8	85.8 -2.3	100.0 -4.0
21	109.6 13.3	110.8 10.1	111.7 3.8	112.3 2.2	120.7 1.0	116.5 5.4	58.0 18.4	102.4 -0.7	113.0 -1.7	118.4 -2.6	111.4 -2.6	89.0 -4.8				
ULT	109.6 13.3	110.2 11.6	110.7 8.9	111.1 7.1	113.0 5.7	113.6 5.7	105.7 6.6	105.3 5.6	106.1 4.7	107.3 3.9	107.7 3.2	106.2 2.6	110.7 8.9	116.5 2.8	91.1 2.4	106.3 -3.2
221	122.7 24.0	109.2 4.8	135.3 -2.7	117.8 -5.7	122.8 -1.9	125.4 -3.1	74.4 12.0	114.3 7.5	131.4 0.5	117.7 5.4	129.3 -11.7	98.6 -2.2				
ULT	122.7 24.0	116.0 14.2	122.4 7.3	121.2 3.9	121.6 2.6	122.2 1.6	115.4 2.5	115.2 3.1	117.0 2.8	117.1 3.0	118.2 1.3	116.6 1.1	122.4 7.3	122.0 -3.5	106.7 5.5	115.2 -3.7

TAULU 2:  
TEOLLISUUSTUOTANNON VOLYYMI-INDEKSI TYÖPÄIVÄÄ KOHTI V. 1995  
INDUSTRIPRODUKTIONS VOLYMINDEKX PER ARBETS DAG ÅR 1995

TOL NI	NELJÄNNEKSET KVARTAL																
	TAMMI JAN	HELMI FEBR	MAALIS MARS	HUHTI APRIL	TOUKO MAJ	KESÄ JUNI	HEINÄ JULI	ELO AUG	SYYS SEPT	LOKA OKTOB	MARRAS NOVEMB	JOULU DEC	I	II	III	IV	
222	%	64.4 -33.7	72.8 -11.2	86.9 -12.9	85.4 -21.6	79.4 -29.2	76.1 -15.2	11.4 -20.2	73.4 -22.9	86.2 -17.3	81.2 -21.6	56.1 -36.0					
ULT	%	64.4 -33.7	68.6 -23.4	74.7 -19.7	77.4 -20.2	77.8 -22.2	77.5 -21.2	68.1 -21.1	68.7 -21.4	70.7 -20.8	71.7 -20.9	71.3 -22.2	74.7 -19.7	80.3 -22.5	57.0 -20.0	73.4 -25.9	
223-9	%	57.4 17.1	60.1 18.0	61.3 6.2	73.2 4.6	81.1 -4.0	84.3 0.1	55.0 9.2	80.8 4.4	80.0 -6.8	78.7 -2.1	52.7 2.9					
ULT	%	57.4 17.1	58.7 17.5	59.6 13.4	63.0 10.7	66.6 6.7	69.6 5.3	67.5 5.7	69.1 5.6	70.4 3.8	71.2 3.1	69.1 2.1	59.6 13.4	79.5 -0.0	71.9 1.1	65.2 -3.2	
22	%	65.6 13.3	66.8 12.7	71.8 2.4	79.3 0.5	86.0 -5.5	88.7 -1.4	54.7 9.1	84.3 3.0	86.5 -6.3	83.5 -2.4	58.4 -1.7					
ULT	%	65.6 13.3	66.2 13.0	68.1 9.0	70.9 6.5	73.9 3.4	76.4 2.4	73.3 3.1	74.6 3.1	76.0 1.8	76.7 1.3	74.9 0.1	68.1 9.0	84.7 -2.3	75.2 0.5	71.7 -5.1	
231	%	154.3 13.3	153.5 13.0	157.0 9.0	148.1 5.3	141.1 3.8	135.5 -1.6	100.3 6.5	118.5 -3.9	137.2 -1.0	146.3 5.1	137.9 -1.4					
ULT	%	154.3 13.3	153.9 13.2	154.9 11.7	153.2 10.1	150.8 8.9	148.2 7.1	141.4 7.1	138.5 5.8	138.4 5.0	139.2 5.0	140.4 4.3	154.9 11.7	141.6 2.5	118.7 -0.0	145.6 2.5	
232	%	122.6 13.4	111.3 8.2	124.0 1.7	115.3 3.9	101.2 -14.4	90.5 -22.8	82.1 7.9	109.5 18.1	125.4 5.2	131.6 14.5	107.2 3.7					
ULT	%	122.6 13.4	117.0 10.9	119.3 7.5	118.3 6.6	114.9 2.2	110.8 -2.1	106.7 -1.1	107.1 1.0	109.1 1.5	111.4 2.9	111.9 2.6	119.3 7.5	102.3 -11.4	105.7 10.1	120.2 5.8	
233	%	129.5 48.0	125.0 38.3	138.8 30.3	146.5 51.3	149.2 40.2	146.0 24.8	31.4 20.6	147.4 34.0	141.4 21.6	146.6 23.5	109.5 6.7					
ULT	%	129.5 48.0	127.2 43.1	131.1 38.3	135.0 41.6	137.8 41.3	139.2 38.1	123.8 37.4	126.7 36.9	128.4 34.8	130.2 33.4	129.5 29.6	131.1 38.3	147.3 37.9	106.7 26.9	132.8 16.5	
23	%	142.9 16.5	139.0 14.4	146.1 9.5	139.4 9.5	131.8 3.4	125.2 -3.5	86.8 7.4	119.9 5.5	134.7 3.0	142.5 9.4	126.3 0.5					
ULT	%	142.9 16.5	141.0 15.0	142.7 13.3	141.9 12.4	139.9 10.6	137.4 8.2	130.2 8.1	128.9 7.8	129.5 7.2	130.8 7.4	131.5 6.6	142.7 13.3	132.2 3.1	113.8 5.0	137.4 4.8	
24	%	97.9 16.3	96.8 10.2	98.7 10.2	106.5 3.4	115.8 3.4	109.1 1.0	54.2 19.1	96.6 5.3	117.4 6.1	111.9 2.8	79.4 4.3					
ULT	%	97.9 16.3	97.4 13.2	97.8 12.1	100.0 9.7	103.2 8.2	104.1 6.9	97.0 7.8	97.0 7.4	99.2 7.3	100.5 6.7	100.3 6.7	97.8 12.1	110.5 2.6	89.4 8.2	103.4 5.1	
251	%	99.8 17.9	99.6 30.5	111.8 17.7	115.5 34.0	127.2 33.5	131.8 17.2	70.6 46.3	108.8 30.0	112.4 3.7	108.0 -2.5	139.4 3.7					
ULT	%	99.8 17.9	99.7 23.9	103.7 21.6	106.7 24.7	110.8 26.6	114.3 24.7	108.1 26.4	108.1 26.9	108.6 23.7	108.6 20.5	112.4 18.0	103.7 21.6	124.8 27.4	97.3 21.4	123.6 5.1	

TAULU 2:  
TEOLLISUUSTUOTANNON VOLYYMI-INDEKSI TYÖPÄIVÄÄ KOHTI V. 1995  
INDUSTRIPRODUKTIONS VOLYMINDEKX PER ARBEITSDAG AR 1995

TOL NI	NELJÄNNEKSET KVARTAL															
	TAMMI JAN	HELMI FEBR	MAALIS MARS	HUHTI APRIL	TOUKO MAJ	KESÄ JUNI	HEINÄ JULI	ELO AUG	SYYS SEPT	LOKA OKTOB	MARRAS NOVEMB	JOULU DEC	I	II	III	IV
252	%	95.9 53.1	111.6 27.2	88.5 23.9	123.8 38.1	114.0 41.9	120.8 32.3	66.3 6.2	87.5 17.6	101.9 25.2	104.6 8.9	134.0 54.9				
ULT	%	95.9 53.1	103.8 38.0	98.7 33.5	105.0 34.8	106.8 36.3	109.1 35.5	103.0 32.2	101.1 30.4	101.2 29.8	101.5 27.3	104.9 29.3	98.7 33.5	119.5 37.3	85.2 17.2	116.0 28.1
25	%	94.3 32.2	103.3 27.6	98.4 19.6	120.6 34.0	120.0 36.7	129.8 24.4	73.0 20.8	100.2 22.1	109.8 14.3	108.1 3.5	133.2 24.9				
ULT	%	94.3 32.2	98.8 29.8	98.7 26.2	104.1 28.4	107.3 30.1	111.1 29.0	105.6 28.1	104.9 27.4	105.5 25.7	105.8 23.0	108.8 23.0	98.7 26.2	123.5 31.3	94.4 18.6	118.8 16.2
261-3	%	228.7 45.8	237.3 34.4	280.9 37.8	258.8 31.0	288.6 36.2	277.4 39.8	139.4 36.7	254.2 32.3	314.9 32.8	293.7 22.6	339.9 36.9				
ULT	%	228.7 45.8	233.0 39.8	249.0 39.0	251.4 36.9	258.8 36.7	261.9 37.3	244.4 37.2	245.7 36.5	253.3 36.0	257.4 34.3	269.3 33.6	249.0 39.0	274.9 35.7	236.2 33.4	317.1 28.2
264	%	106.6 11.0	113.7 19.4	99.5 8.4	116.9 22.7	132.4 22.1	120.2 11.3	104.6 50.6	100.0 16.4	120.8 8.6	122.8 7.8	131.1 10.4				
ULT	%	106.6 11.0	110.2 15.2	106.6 13.0	109.2 15.4	113.8 16.9	114.9 15.9	113.4 19.5	111.7 19.2	112.7 17.8	113.7 16.6	117.9 14.4	106.6 13.0	123.1 18.5	108.5 22.0	133.5 6.6
26	%	209.9 42.3	218.3 33.0	253.0 35.6	237.0 30.4	264.6 35.0	253.2 37.3	134.0 38.3	230.5 31.1	285.0 30.9	267.4 21.4	307.8 34.8				
ULT	%	209.9 42.3	214.1 37.4	227.1 36.7	229.5 35.0	236.5 35.0	239.3 35.4	224.3 35.7	225.1 35.0	231.7 34.5	235.3 32.8	246.0 32.0	227.1 36.7	251.6 34.2	216.5 32.4	288.9 26.4
271-2	%	134.4 23.2	164.5 31.0	170.1 36.9	167.8 31.9	169.6 23.9	156.0 2.1	85.4 11.6	154.9 32.2	154.3 11.0	160.9 20.6	146.8 18.3				
ULT	%	134.4 23.2	149.4 27.4	156.3 30.7	159.2 31.0	161.3 29.4	160.4 24.1	149.7 22.9	150.3 24.1	150.8 22.4	151.8 22.2	152.6 21.3	156.3 30.7	164.5 18.4	131.5 18.6	156.2 17.4
273,5,9	%	81.0 -7.5	72.1 -11.7	76.3 -12.1	75.1 -12.2	88.1 1.1	76.7 4.7	40.3 15.5	93.9 30.1	95.4 19.2	83.0 -3.7	84.8 15.2				
ULT	%	81.0 -7.5	76.5 -9.5	76.5 -10.4	76.1 -10.8	78.5 -8.4	78.2 -6.5	72.8 -5.1	75.4 -0.9	77.6 1.4	78.2 0.8	80.9 3.9	76.5 -10.4	79.9 -2.5	76.5 22.7	90.5 10.7
274	%	73.1 38.1	84.1 57.4	72.3 39.9	74.3 16.1	82.6 34.4	90.5 4.7	29.9 -28.0	60.8 -5.3	86.9 5.2	87.6 -0.0	93.4 20.5				
ULT	%	73.1 38.1	78.6 47.8	76.5 45.2	75.9 36.8	77.3 36.3	79.5 28.9	72.4 23.2	70.9 19.3	72.7 17.2	74.2 14.9	77.5 15.8	76.5 45.2	82.4 16.7	59.2 -5.7	91.8 12.4
27	%	100.5 19.3	115.1 27.8	114.2 26.8	113.6 19.2	120.3 21.7	114.8 3.2	55.5 1.4	107.7 22.1	117.1 10.8	117.3 10.2	113.8 18.4				
ULT	%	100.5 19.3	107.8 23.7	109.9 24.8	110.9 23.3	112.7 23.0	113.1 19.1	104.9 17.5	105.2 18.1	106.5 17.2	107.6 16.4	109.5 16.5	109.9 24.8	116.2 14.2	93.4 12.7	118.5 14.8

TAULU 2:  
TEOLLISUUSTUOTANNON VOLYYMI-INDEKSI TYÖPÄIVÄÄ KOHTI V.1995  
INDUSTRIPRODUKTIONS VOLYMINDEKX PER ARBETSDAG ÅR 1995

TOL NI	NELJÄNNEKSET KVARTAL															
	TAMMI JAN	HELMI FEBR	MAALIS MARS	HUHTI APRIL	TOUKO MAJ	KESÄ JUNI	HEINÄ JULI	ELO AUG	SYYS SEPT	LOKA OKTOB	MARRAS NOVEMB	JOULU DEC	I	II	III	IV
29	%	96.6 13.9	100.3 13.9	95.3 -3.4	98.5 -12.7	109.1 -0.7	108.5 -10.2	21.8 -49.7	89.3 -10.2	104.2 -13.5	110.8 -18.1	112.3 -16.9				
ULT	%	96.6 -1.8	98.4 5.6	97.4 2.5	97.7 -1.8	100.0 -1.6	101.4 -3.2	90.0 -6.2	89.9 -6.7	91.5 -7.7	93.4 -9.0	95.2 -9.9	97.4 2.5	105.4 -8.0	71.8 -18.2	102.2 -18.5
D	%	112.3 13.1	115.5 14.2	120.0 15.5	123.3 10.3	126.9 10.2	125.1 8.9	83.2 10.6	113.3 8.9	125.5 6.3	124.1 2.7	125.6 4.5				
ULT	%	112.3 13.1	113.9 13.7	116.0 14.3	117.8 13.2	119.6 12.6	120.5 11.9	115.2 11.8	115.0 11.4	116.1 10.8	116.9 9.8	117.7 9.3	116.0 14.3	125.1 9.8	107.4 8.3	122.9 4.5
31	%	139.6 3.2	132.3 -9.3	126.4 -1.6	119.4 2.6	101.9 3.0	97.3 -1.3	88.2 5.8	90.8 -6.2	101.4 -5.7	108.1 -7.5	124.0 -2.5				
ULT	%	139.6 3.2	135.9 -3.3	132.8 -2.8	129.4 -1.6	123.9 -0.8	119.5 -0.9	115.0 -0.2	112.0 -0.8	110.8 -1.4	110.5 -2.0	111.8 -2.0	132.8 -2.8	106.2 1.5	93.5 -2.5	121.4 -2.8
34	%	99.7 3.7	98.2 -1.8	100.7 -2.5	97.6 -5.3	98.6 -3.0	96.5 3.4	91.0 -6.0	102.9 2.0	99.2 -0.0	100.9 2.0	101.5 3.3				
ULT	%	99.7 3.7	99.0 0.9	99.6 -0.3	99.1 -1.6	99.0 -1.9	98.6 -1.0	97.5 -1.7	98.2 -1.3	98.3 -1.1	98.5 -0.8	98.8 -0.4	99.6 -0.3	97.6 -1.8	97.7 -1.3	101.0 3.1
E	%	136.8 3.3	129.9 -8.9	124.7 -1.6	117.9 2.2	101.7 2.6	97.2 -1.0	88.4 4.9	91.7 -5.6	101.2 -5.3	107.6 -6.9	122.4 -2.2				
ULT	%	136.8 3.3	133.4 -3.0	130.5 -2.6	127.3 -1.5	122.2 -0.8	118.0 -0.9	113.8 -0.3	111.0 -0.8	109.9 -1.3	109.7 -1.9	110.9 -1.9	130.5 -2.6	105.6 1.3	93.8 -2.4	120.0 -2.5
C,D,E	%	114.0 11.8	116.2 11.3	119.9 13.6	122.1 9.4	123.9 9.2	122.6 7.9	84.8 8.7	112.4 8.1	122.8 5.2	121.9 1.9	124.6 3.9				
ULT	%	114.0 11.8	115.1 11.6	116.7 12.3	118.1 11.5	119.2 11.0	119.8 10.5	114.8 10.3	114.5 10.0	115.4 9.4	116.1 8.6	116.8 8.1	116.7 12.3	122.9 8.8	106.7 7.1	121.9 3.8
14,15	%	123.1 5.3	122.8 9.0	124.4 6.5	128.3 3.8	124.5 3.1	121.5 2.2	104.9 7.5	116.6 3.7	124.7 -2.2	114.9 -7.5	109.4 -8.6				
ULT	%	123.1 5.3	122.9 7.1	123.4 6.9	124.7 6.1	124.6 5.5	124.1 5.0	121.4 5.3	120.8 5.1	121.2 4.2	120.6 2.9	119.6 1.9	123.4 6.9	124.8 3.1	115.4 2.6	105.9 -11.0
23-27	%	131.4 30.3	137.9 25.9	146.2 24.4	149.9 24.1	158.0 26.0	156.0 20.4	85.4 22.9	136.6 21.6	160.0 18.5	155.1 12.1	165.7 17.8				
ULT	%	131.4 30.3	134.6 28.0	138.5 26.7	141.3 26.0	144.7 26.0	146.6 25.0	137.8 24.8	137.7 24.4	140.1 23.6	141.6 22.2	143.8 21.7	138.5 26.7	154.6 23.4	127.3 20.6	162.5 17.9
MUU D	%	93.6 2.8	95.8 6.1	98.5 11.5	101.2 0.9	104.4 -0.7	103.2 1.0	72.8 3.1	94.5 -0.1	99.9 -1.7	104.4 -1.8	101.9 -2.8				
ULT	%	93.6 2.8	94.7 4.5	95.9 6.8	97.3 5.2	98.7 3.9	99.4 3.4	95.6 3.3	95.5 2.9	96.0 2.4	96.8 1.9	97.3 1.4	95.9 6.8	102.9 0.4	89.1 0.2	99.8 -2.0

TAULU 2:  
TEOLLISUUSTUOTANNON VOLYYMI-INDEKSI TYÖPÄIVÄÄ KOHTI V. 1995  
INDUSTRIPRODUKTIONS VOLYMINDEKX PER ARBETS DAG ÅR 1995

TOL NI	NELJÄNNEKSET KVARTAL															
	TAMMI JAN	HELMI FEBR	MAALIS MARS	HUHTI APRIL	TOUKO MAJ	KESÄ JUNI	HEINÄ JULI	ELO AUG	SYYS SEPT	LOKA OKTOB	MARRAS NOVEMB	JOULU DEC	I	II	III	IV
I	148.9	157.5	160.4	174.6	183.0	187.9	101.0	156.3	182.0	174.9	189.6	199.3				
%	38.2	31.8	29.5	32.4	34.0	30.1	29.8	28.2	23.9	13.8	22.8	33.8				
ULT	148.9	153.2	155.6	160.4	164.9	168.7	159.0	158.7	161.3	162.7	165.1	168.0	155.6	181.8	146.4	187.9
%	38.2	34.8	33.0	32.8	33.1	32.5	32.2	31.7	30.7	28.6	28.0	28.6	33.0	32.1	26.8	23.4
CO	92.6	95.2	97.4	100.2	102.7	101.0	67.6	91.5	98.5	103.2	104.0	98.8				
%	-0.2	2.7	11.1	0.2	0.4	-0.3	0.7	-1.3	-2.7	-3.4	-2.6	0.1				
ULT	92.6	93.9	95.1	96.4	97.6	98.2	93.8	93.5	94.1	95.0	95.8	96.1	95.1	101.3	85.8	102.0
%	-0.2	1.2	4.4	3.3	2.7	2.1	2.0	1.6	1.1	0.6	0.2	0.2	4.4	0.1	-1.3	-2.1
R	112.7	113.5	117.9	117.8	117.9	115.9	86.1	109.5	118.4	115.7	117.3	109.7				
%	9.5	8.2	8.4	6.0	5.2	3.9	5.6	5.4	1.9	-1.1	-0.1	-0.9				
ULT	112.7	113.1	114.7	115.5	115.9	115.9	111.7	111.4	112.2	112.5	113.0	112.7	114.7	117.2	104.7	114.3
%	9.5	8.8	8.7	8.0	7.4	6.8	6.7	6.5	6.0	5.2	4.7	4.2	8.7	5.0	4.1	-0.7

TAULU 1:  
TEOLLISUUSTUOTANNON VOLYYMI-INDEKSI V. 1996  
INDUSTRIPRODUKTIONS VOLYMINDEKSI ÅR 1996

(ENNAKKOTIETOJA)  
(FÖRHANDSUPPGIFTER)

NELJÄNNEKSET  
KVARTAL

TOL NI	TAMMI JAN	HELMI FEBR	MAALIS MARS	HUHTI APRIL	TOUKO MAJ	KESÄ JUNI	HEINÄ JULI	ELO AUG	SYYS SEPT	LOKA OKTOB	MARRAS NOVEMB	JOULU DEC	I	II	III	IV	
07	81.6 -8.5	75.3 -4.0	85.6 -13.2	97.6 19.9	96.0 32.5	82.3 6.5	87.8 5.7	70.4 11.3	55.7 -39.5	79.3 18.3	78.3 2.9	74.2 0.3					
ULT	81.6 -8.5	78.5 -6.4	80.8 -8.9	85.0 -2.2	87.2 3.8	86.4 4.2	86.6 4.4	84.6 5.1	81.4 -0.5	81.2 1.1	80.9 1.3	80.4 1.2	80.8 -8.9	92.0 19.4	71.3 -10.3	77.3 6.8	
09	69.8 9.6	54.2 -5.6	57.8 -18.5	63.9 0.4	81.4 15.1	142.0 -2.1	126.7 -37.5	234.6 -11.5	78.8 4.7	67.8 -7.9	61.3 -15.2	48.0 -9.4					
ULT	69.8 9.6	62.0 2.4	60.6 -5.4	61.4 -3.9	65.4 0.2	78.2 -0.5	85.1 -11.6	103.8 -11.6	101.0 -10.4	97.7 -10.2	94.4 -10.5	90.5 -10.5	60.6 -5.4	95.8 2.8	146.7 -18.9	59.0 -10.9	
C	73.2 3.0	60.4 -5.0	65.9 -16.6	73.7 7.1	85.7 20.3	124.6 -0.6	115.4 -31.2	186.8 -9.5	72.1 -10.1	71.1 -0.8	66.2 -9.7	55.6 -5.9					
ULT	73.2 3.0	66.8 -0.8	66.5 -6.6	68.3 -3.3	71.8 1.5	80.6 0.9	85.5 -7.4	98.2 -7.9	95.3 -8.1	92.9 -7.6	90.5 -7.7	87.6 -7.6	66.5 -6.6	94.7 7.0	124.8 -17.6	64.3 -5.5	
111-5	104.1 8.4	100.7 8.3	110.1 0.7	114.4 12.7	119.0 7.1	114.9 1.4	100.1 17.4	111.2 4.3	115.1 9.3	138.8 6.8	126.8 0.7	99.0 2.9					
ULT	104.1 8.4	102.4 8.4	105.0 5.6	107.3 7.4	109.7 7.3	110.5 6.3	109.1 7.6	109.3 7.2	110.0 7.4	112.8 7.3	114.1 6.6	112.9 6.3	105.0 5.6	116.1 6.9	108.8 9.8	121.5 3.5	
116	109.6 6.2	91.9 1.4	95.6 -7.2	105.1 11.5	112.2 -1.8	110.0 -10.9	119.1 -2.6	111.3 3.5	84.5 -1.5	89.0 -8.7	79.3 -13.3	94.3 1.5					
ULT	109.6 6.2	100.7 4.0	99.0 0.1	100.5 2.8	102.9 1.8	104.1 -0.7	106.2 -1.0	106.8 -0.5	104.4 -0.6	102.8 -1.3	100.7 -2.3	100.2 -2.0	99.0 0.1	109.1 -1.4	105.0 -0.2	87.6 -6.8	
117	62.5 5.8	39.1 -21.5	72.0 -16.5	79.2 5.0	100.8 -6.2	93.1 -9.4	53.6 228.2	89.3 -14.1	102.3 26.3	108.7 28.8	78.6 -7.1	34.2 -32.5					
ULT	62.5 5.8	50.8 -6.7	57.9 -11.0	63.2 -6.6	70.7 -6.5	74.5 -7.1	71.5 0.6	73.7 -1.9	76.9 1.4	80.1 4.4	79.9 3.3	76.1 1.3	57.9 -11.0	91.1 -4.4	81.7 21.8	73.8 0.9	
119	112.2 -13.8	95.9 8.1	105.6 -12.8	107.0 3.4	125.8 -5.1	111.6 -3.2	117.8 -4.7	113.0 -15.0	108.7 1.8	119.1 9.3	109.2 -3.0	108.5 -4.4					
ULT	112.2 -13.8	104.0 -4.9	104.5 -7.7	105.2 -5.1	109.3 -5.1	109.7 -4.8	110.8 -4.8	111.1 -6.2	110.8 -5.4	111.7 -4.0	111.4 -3.9	111.2 -4.0	104.5 -7.7	114.8 -2.0	113.2 -6.5	112.3 0.6	
11	103.2 6.9	95.4 6.2	104.8 -2.0	110.1 11.9	116.3 4.4	112.0 -1.6	101.7 12.8	109.4 2.3	107.6 7.9	126.2 5.4	114.0 -1.7	95.0 1.5					
ULT	103.2 6.9	99.3 6.6	101.1 3.4	103.4 5.6	106.0 5.3	107.0 4.0	106.2 5.1	106.6 4.8	106.7 5.1	108.7 5.1	109.2 4.5	108.0 4.2	101.1 3.4	112.8 4.6	106.2 7.4	111.7 1.8	
12	96.9 7.9	90.3 -2.4	91.0 -11.4	86.0 -6.3	99.7 -0.1	84.7 -9.3	45.2 33.1	104.1 0.2	101.1 6.0	115.3 21.3	101.2 2.0	72.0 4.1					
ULT	96.9 7.9	93.6 2.7	92.7 -2.4	91.0 -3.4	92.8 -2.7	91.4 -3.8	84.8 -1.7	87.2 -1.4	88.8 -0.5	91.4 1.8	92.3 1.8	90.6 2.0	92.7 -2.4	90.1 -5.1	83.5 7.4	96.2 9.5	

TAULU 1:  
TEOLLISUUSTUOTANNON VOLYYMI-INDEKSI V. 1996  
INDUSTRIPRODUKTIONS VOLYMINDEKSI ÅR 1996

(ENNAKKOTIETOJA)  
(FÖRHANDSUPPGIFTER)

NELJÄNNEKSET  
KVARTAL

TOL NI	TAMMI JAN	HELMI FEBR	MAALIS MARS	HUHTI APRIL	TOUKO MAJ	KESÄ JUNI	HEINÄ JULI	ELO AUG	SYYS SEPT	LOKA OKTOB	MARRAS NOVEMB	JOULU DEC	I	II	III	IV	
131	50.9 -13.2	50.5 -5.1	38.2 -10.8	37.0 -5.6	59.0 -11.2	45.7 -10.3	29.6 31.6	60.4 -16.6	63.6 -5.9	53.4 -2.3	45.0 -8.4	34.6 -9.8					
ULT	50.9 -13.2	50.7 -9.3	46.5 -9.7	44.1 -8.9	47.1 -9.5	46.9 -9.6	44.4 -6.8	46.4 -8.6	48.3 -8.2	48.8 -7.6	48.5 -7.7	47.3 -7.8	46.5 -9.7	47.2 -9.5	51.2 -5.5	44.4 -6.4	
132	53.7 -6.0	41.7 -22.9	51.8 -19.5	49.9 -6.3	48.9 -5.7	46.4 -18.0	3.5 -12.5	44.1 -11.8	53.0 7.2	51.8 2.7	42.5 -18.7	27.5 -26.4					
ULT	53.7 -6.0	47.7 -14.2	49.1 -16.1	49.3 -13.9	49.2 -12.3	48.7 -13.3	42.3 -13.3	42.5 -13.1	43.7 -10.8	44.5 -9.4	44.3 -10.3	42.9 -11.4	49.1 -16.1	48.4 -10.2	33.5 -2.8	40.6 -13.1	
133	103.0 9.0	87.0 -8.7	89.6 -9.0	70.5 3.9	89.9 3.4	73.4 -0.3	14.8 40.8	103.0 -9.0	96.1 -5.2	100.6 -2.2	96.0 -8.7	56.3 -4.6					
ULT	103.0 9.0	95.0 0.1	93.2 -3.0	87.6 -1.7	88.0 -0.7	85.6 -0.6	75.5 0.2	78.9 -1.4	80.8 -1.9	82.8 -2.0	84.0 -2.7	81.7 -2.8	93.2 -3.0	77.9 2.4	71.3 -5.0	84.3 -5.3	
13	61.0 -6.6	56.8 -7.3	48.9 -10.9	44.3 -3.0	64.1 -7.4	51.0 -8.3	24.9 32.0	67.3 -14.3	69.0 -5.1	62.3 -2.0	54.5 -9.2	38.2 -9.5					
ULT	61.0 -6.6	58.9 -6.9	55.6 -8.1	52.8 -7.1	55.0 -7.2	54.4 -7.4	50.2 -5.4	52.3 -6.9	54.2 -6.7	55.0 -6.2	54.9 -6.5	53.5 -6.6	55.6 -8.1	53.1 -6.5	53.7 -5.2	51.7 -6.5	
14	111.9 -3.2	91.7 -6.1	111.9 -8.2	111.3 4.1	111.3 -0.3	116.5 -4.6	56.7 13.1	111.0 4.7	136.8 3.9	123.1 9.7	118.3 11.3	82.4 12.6					
ULT	111.9 -3.2	101.8 -4.5	105.2 -5.9	106.7 -3.5	107.6 -2.8	109.1 -3.2	101.6 -2.0	102.8 -1.2	106.6 -0.5	108.2 0.6	109.1 1.5	106.9 2.2	105.2 -5.9	113.0 -0.5	101.5 5.8	107.9 11.0	
15	118.4 -9.6	113.9 -8.0	117.3 -13.6	116.0 -9.7	116.7 -10.9	97.0 -15.1	124.3 -7.3	120.5 -7.8	125.3 2.6	132.9 8.2	128.3 12.8	105.7 15.4					
ULT	118.4 -9.6	116.1 -8.8	116.5 -10.5	116.4 -10.3	116.4 -10.4	113.2 -11.1	114.8 -10.5	115.5 -10.2	116.6 -8.8	118.2 -7.2	119.1 -5.6	118.0 -4.3	116.5 -10.5	109.9 -11.8	123.3 -4.4	122.3 11.8	
16	85.9 6.8	85.5 2.0	96.1 -3.8	89.0 -1.6	97.6 -0.9	79.0 -3.0	69.5 2.2	83.1 -3.8	92.6 -1.9	99.9 -1.0	95.4 -3.7	88.9 -3.2					
ULT	85.9 6.8	85.7 4.3	89.2 1.3	89.1 0.5	90.8 0.2	88.9 -0.3	86.1 0.0	85.7 -0.5	86.5 -0.6	87.8 -0.7	88.5 -1.0	88.5 -1.2	89.2 1.3	88.5 -1.8	81.7 -1.4	94.7 -2.6	
17	87.7 -3.9	79.5 -1.6	84.5 -9.5	83.1 0.6	87.3 -10.0	94.3 -9.0	35.6 31.0	106.1 4.1	104.9 12.3	112.4 16.0	103.9 12.6	74.8 18.1					
ULT	87.7 -3.9	83.6 -2.8	83.9 -5.2	83.7 -3.8	84.4 -5.2	86.1 -5.9	78.9 -4.1	82.3 -2.9	84.8 -1.1	87.6 0.9	89.0 2.0	87.8 3.0	83.9 -5.2	88.2 -6.6	82.2 10.8	97.0 15.3	
181-4	121.1 -7.6	121.8 -2.8	130.9 -5.1	129.1 -1.1	128.1 6.5	111.7 -1.4	117.7 -1.9	111.1 -2.3	126.0 6.9	134.4 9.9	131.6 14.0	132.4 15.4					
ULT	121.1 -7.6	121.5 -5.2	124.6 -5.2	125.7 -4.2	126.2 -2.2	123.8 -2.1	122.9 -2.0	121.4 -2.1	122.0 -1.1	123.2 -0.0	124.0 1.2	124.7 2.3	124.6 -5.2	123.0 1.3	118.3 0.9	132.8 13.0	

TAULU 1:  
TEOLLISUUSTUANTONN VOLYYMI-INDEKSI V. 1996  
INDUSTRIPRODUKTIONS VOLYMINDEX ÅR 1996

NELJÄNNEKSET  
KVARTAL

(ENNAKKOTIETOJA)  
(FÖRHANDSUPPGIFTER)

TOL NI	(ENNAKKOTIETOJA) (FÖRHANDSUPPGIFTER)												NELJÄNNEKSET KVARTAL			
	TAMMI JAN	HELMI FEBR	MAALIS MARS	HUHTI APRIL	TOUKO MAJ	KESÄ JUNI	HEINÄ JULI	ELO AUG	SYYS SEPT	LOKA OKTOB	MARRAS NOVEMB	JOULU DEC	I	II	III	IV
185-9	100.5 -6.7	96.9 -6.9	102.5 -13.6	97.6 4.1	106.4 -5.8	98.6 -9.1	69.2 10.4	92.4 -8.9	92.7 -8.2	103.8 -5.1	95.2 -6.4	85.3 0.0				
ULT	100.5	98.7	100.0	99.4	100.8	100.4	96.0	95.5	95.2	96.1	96.0	95.1	100.0	100.9	84.8	94.8
%	-6.7	-6.8	-9.2	-6.3	-6.2	-6.7	-5.2	-5.6	-5.9	-5.8	-5.9	-5.5	-9.2	-4.0	-4.1	-4.1
18	112.3	111.2	118.8	115.7	118.9	106.1	97.1	103.1	111.8	121.4	116.1	112.4				
%	-7.2	-4.4	-8.4	0.7	1.5	-4.6	1.6	-4.9	1.1	3.9	6.0	9.9				
ULT	112.3	111.8	114.1	114.5	115.4	113.9	111.5	110.4	110.6	111.7	112.1	112.1	114.1	113.6	104.0	116.6
%	-7.2	-5.8	-6.7	-5.0	-3.7	-3.8	-3.2	-3.4	-2.9	-2.2	-1.5	-0.6	-6.7	-0.7	-0.9	6.5
191	123.4	120.8	137.2	101.7	120.5	137.1	137.6	134.2	136.4	143.0	155.6	123.4				
%	1.0	11.2	2.6	4.6	16.9	6.4	9.4	8.7	9.1	15.3	23.2	4.2				
ULT	123.4	122.1	127.1	120.8	120.7	123.5	125.5	126.6	127.7	129.2	131.6	130.9	127.1	119.8	136.0	140.7
%	1.0	5.8	4.6	4.6	6.9	6.8	7.2	7.4	7.6	8.4	9.8	9.3	4.6	9.1	9.0	14.4
192	73.8	70.5	78.3	82.2	114.2	119.5	128.0	121.4	125.1	121.1	85.2	58.2				
%	11.6	15.0	-10.9	13.4	-0.6	6.0	17.9	9.6	16.9	12.0	-11.6	17.8				
ULT	73.8	72.2	74.2	76.2	83.8	89.8	95.2	98.5	101.5	103.4	101.8	98.1	74.2	105.3	124.8	88.2
%	11.6	13.5	3.4	5.9	4.1	4.5	6.8	7.2	8.5	8.9	7.0	7.5	3.4	5.3	14.8	4.2
19	121.5	118.5	133.9	104.0	125.6	139.9	142.1	138.4	140.0	145.6	150.1	117.2				
%	1.9	11.0	0.9	5.2	12.9	5.9	10.0	8.2	9.8	13.7	17.8	4.9				
ULT	121.5	120.0	124.7	119.5	120.7	123.9	126.5	128.0	129.3	131.0	132.7	131.4	124.7	123.2	140.2	137.6
%	1.9	6.2	4.2	4.4	6.1	6.1	6.7	6.9	7.2	7.9	8.8	8.5	4.2	8.0	9.3	12.4
211	158.6	137.8	161.8	141.1	147.9	120.4	56.8	142.0	132.7	144.0	131.4	105.2				
%	18.2	2.0	5.4	9.9	-4.5	-14.4	-28.3	-8.7	-9.1	-9.3	-13.5	-10.4				
ULT	158.6	148.2	152.7	149.8	149.4	144.6	132.1	133.3	133.2	134.3	134.0	131.6	152.7	136.5	110.5	126.8
%	18.2	10.1	8.4	8.8	5.8	2.5	-0.1	-1.4	-2.3	-3.1	-4.1	-4.6	8.4	-3.4	-12.9	-11.1
212	103.5	102.2	107.5	104.6	112.6	108.2	59.8	108.3	113.1	126.8	108.4	80.0				
%	-3.0	2.3	-6.1	6.2	-2.5	-1.3	8.2	5.7	5.1	7.7	0.2	8.1				
ULT	103.5	102.9	104.4	104.5	106.1	106.4	99.8	100.8	102.2	104.7	105.0	102.9	104.4	108.4	93.7	105.1
%	-3.0	-0.4	-2.4	-0.4	-0.9	-0.9	-0.2	0.6	1.1	1.8	1.7	2.1	-2.4	0.6	6.0	5.1
21	111.5	107.4	115.4	109.9	117.7	109.9	59.3	113.2	116.0	129.3	111.8	83.6				
%	0.7	2.2	-3.9	6.9	-2.9	-3.6	1.1	2.8	2.4	4.5	-2.5	4.2				
ULT	111.5	109.5	111.4	111.1	112.4	112.0	104.5	105.6	106.7	109.0	109.2	107.1	111.4	112.5	96.2	108.2
%	0.7	1.5	-0.5	1.3	0.4	-0.3	-0.2	0.2	0.4	0.9	0.6	0.8	-0.5	-0.2	2.3	1.9
221	134.4	102.7	121.3	123.0	134.9	123.0	77.1	121.5	132.6	129.8	113.0	90.6				
%	7.6	0.2	-14.8	9.8	8.9	0.4	1.6	1.0	1.0	6.6	-13.6	-2.0				
ULT	134.4	118.5	119.4	120.3	123.3	123.2	116.6	117.2	118.9	120.0	119.4	117.0	119.4	127.0	110.4	111.1
%	7.6	4.3	-3.1	-0.1	1.8	1.5	1.5	1.5	1.4	2.0	0.4	0.2	-3.1	6.3	1.1	-3.3

TAULU 1:  
TEOLLISUUSTUANTON VOLYYMI-INDEKSI V. 1996  
INDUSTRIPRODUKTIONS VOLYMINDEX ÅR 1996

(ENNAKKOTIETOJA)  
(FÖRHÅNDSUPPGIFTER)

NELJÄNNEKSET  
KVARTAL

TOL NI	TAMMI JAN	HELMI FEBR	MAALIS MARS	HUHTI APRIL	TOUKO MAJ	KESÄ JUNI	HEINÄ JULI	ELO AUG	SYYS SEPT	LOKA OKTOB	MARRAS NOVEMB	JOULU DEC	I	II	III	IV	
222	71.6 11.0	57.1 -16.7	67.6 -27.7	58.6 -25.3	58.4 -26.5	62.8 -17.0	13.7 19.5	63.3 -19.9	84.7 -1.2	94.0 11.5	80.8 -5.4	57.4 10.6					
ULT	71.6 11.0	64.4 -3.3	65.4 -13.4	63.7 -16.4	62.7 -18.5	62.7 -18.3	55.7 -17.3	56.6 -17.7	59.7 -15.5	63.2 -12.3	64.8 -11.6	64.2 -10.2	65.4 -13.4	59.9 -23.0	53.9 -8.2	77.4 4.8	
223-9	62.6 8.0	56.7 -0.3	61.9 -6.0	65.9 -0.9	83.6 2.3	79.1 -5.3	69.8 25.0	88.3 1.6	87.3 9.1	96.5 17.4	75.7 14.8	57.2 19.9					
ULT	62.6 8.0	59.6 3.9	60.4 0.3	61.8 -0.0	66.1 0.6	68.3 -0.6	68.5 2.4	71.0 2.3	72.8 3.2	75.2 4.8	75.2 5.6	73.7 6.5	60.4 0.3	76.2 -1.3	81.8 10.2	76.5 17.1	
22	71.7 8.1	62.2 -1.3	69.3 -9.6	72.3 -0.5	88.2 1.8	83.3 -5.0	67.3 21.1	90.8 0.4	92.6 7.0	100.3 15.2	80.5 7.5	61.2 14.8					
ULT	71.7 8.1	67.0 3.5	67.8 -1.4	68.9 -1.1	72.8 -0.4	74.5 -1.3	73.5 1.1	75.6 1.0	77.5 1.8	79.8 3.3	79.9 3.7	78.3 4.3	67.8 -1.4	81.3 -1.3	83.5 7.8	80.7 12.4	
231	158.5 0.7	141.6 -0.3	151.9 -5.7	153.8 6.3	151.7 5.5	140.6 5.9	117.5 14.6	142.7 17.4	159.8 17.6	164.7 9.9	167.1 10.6	160.6 16.5					
ULT	158.5 0.7	150.1 0.3	150.7 -1.8	151.5 0.1	151.5 1.2	149.7 1.9	145.1 3.2	144.8 4.8	146.5 6.2	148.3 6.6	150.0 7.0	150.9 7.8	150.7 -1.8	148.7 5.9	140.0 16.7	164.1 12.2	
232	130.3 4.8	128.2 23.6	144.9 12.0	131.9 19.5	146.4 42.7	143.7 60.8	103.1 23.9	128.4 12.4	136.9 10.2	157.2 16.2	134.5 9.9	124.3 19.6					
ULT	130.3 4.8	129.2 13.4	134.5 12.9	133.8 14.4	136.3 19.5	137.6 25.1	132.6 25.0	132.1 23.3	132.7 21.6	135.1 21.0	135.1 19.9	134.2 19.9	134.5 12.9	140.7 39.6	122.8 14.5	138.7 15.0	
233	144.4 11.3	125.6 5.3	124.5 -18.3	121.3 -5.0	130.0 -13.1	121.1 -17.2	34.2 8.6	152.5 -5.7	133.4 -5.8	144.0 -6.5	127.5 -14.7	88.6 -7.0					
ULT	144.4 11.3	135.0 8.4	131.5 -1.7	128.9 -2.5	129.1 -4.8	127.8 -7.0	114.4 -6.4	119.2 -6.3	120.8 -6.3	123.1 -6.3	123.5 -7.1	120.6 -7.1	131.5 -1.7	124.1 -12.1	106.7 -4.4	120.0 -9.7	
23	149.4 2.8	136.1 5.3	146.6 -3.4	144.0 7.7	147.6 10.2	138.9 12.7	103.1 16.6	140.3 12.4	150.5 12.7	160.1 9.2	153.6 7.0	142.0 14.9					
ULT	149.4 2.8	142.8 4.0	144.0 1.4	144.0 2.9	144.7 4.3	143.8 5.6	138.0 6.6	138.2 7.3	139.6 8.0	141.7 8.1	142.7 8.0	142.7 8.5	144.0 1.4	143.5 10.1	131.3 13.6	151.9 10.1	
24	104.5 6.8	100.5 8.9	111.5 3.4	99.1 5.0	116.1 0.4	108.9 0.4	63.0 15.5	111.1 5.3	126.3 7.3	131.7 12.2	125.4 1.3	76.9 9.5					
ULT	104.5 6.8	102.5 7.9	105.5 6.3	103.9 5.9	106.3 4.7	106.8 3.9	100.5 4.9	101.8 4.9	104.6 5.2	107.3 6.1	108.9 5.5	106.3 5.8	105.5 6.3	108.0 1.8	100.2 8.2	111.3 7.3	
251	108.7 9.1	105.7 11.7	107.2 -12.1	107.5 3.8	127.7 0.7	128.6 -2.1	85.7 21.5	115.3 -2.9	117.4 4.8	134.6 19.2	126.0 -2.2	122.1 -2.2					
ULT	108.7 9.1	107.2 10.3	107.2 1.7	107.3 2.2	111.4 1.9	114.2 1.1	110.2 3.0	110.8 2.2	111.5 2.5	113.8 4.2	114.9 3.5	115.5 3.0	107.2 1.7	121.3 0.6	106.1 5.7	127.6 4.4	

TAULU 1:  
TEOLLISUUSTUOTANNON VOLYYMI-INDEKSI V. 1996  
INDUSTRIPRODUKTIONS VOLYMINDEKS ÅR 1996

TOL NI	(ENNAKKOTIETOJA) (FÖRHANDSUPPGIFTER)												NELJÄNNEKSET KVARTAL			
	TAMMI JAN	HELMI FEBR	MAALIS MARS	HUHTI APRIL	TOUKO MAJ	KESÄ JUNI	HEINÄ JULI	ELO AUG	SYYS SEPT	LOKA OKTOB	MARRAS NOVEMB	JOULU DEC	I	II	III	IV
252	102.1 6.8	105.2 -0.8	96.2 -0.5	105.5 -4.6	126.6 11.3	118.9 -1.3	76.2 15.3	95.6 -0.1	119.3 17.4	124.8 14.2	130.8 14.4	103.5 -14.0				
ULT	102.1 6.8	103.7 2.8	101.2 1.7	102.2 0.0	107.1 2.5	109.1 1.8	104.4 3.0	103.3 2.7	105.1 4.3	107.0 5.4	109.2 6.3	108.7 4.3	101.2 1.7	117.0 1.8	97.0 10.5	119.7 4.4
25	101.9 8.4	104.4 6.4	100.7 -6.3	111.3 3.1	128.4 7.4	125.3 -3.1	87.3 19.8	107.1 -2.1	122.5 11.8	132.3 17.0	126.6 5.3	110.1 -7.8				
ULT	101.9 8.4	103.2 7.4	102.4 2.5	104.6 2.7	109.4 3.7	112.0 2.4	108.5 4.1	108.3 3.3	109.9 4.3	112.1 5.7	113.4 5.6	113.2 4.4	102.4 2.5	121.7 2.3	105.6 8.6	123.0 4.6
261-3	272.5 19.5	256.8 14.0	314.3 2.4	260.2 12.1	308.8 7.3	278.9 0.8	188.6 35.7	263.1 -5.2	328.3 4.6	342.5 11.7	354.0 6.6	338.1 11.3				
ULT	272.5 19.5	264.7 16.7	281.2 11.0	275.9 11.2	282.5 10.3	281.9 8.7	268.6 10.9	267.9 8.6	274.6 8.1	281.4 8.5	288.0 8.3	292.2 8.6	281.2 11.0	282.6 6.5	260.0 6.8	344.9 9.8
264	131.8 24.1	115.4 7.0	131.6 21.3	148.5 41.0	134.6 2.0	140.3 17.2	114.8 10.2	110.0 0.9	127.1 5.6	149.6 16.7	153.1 0.2	127.5 7.9				
ULT	131.8 24.1	123.6 15.5	126.3 17.4	131.8 23.2	132.4 18.2	133.7 18.1	131.0 17.0	128.4 15.0	128.2 13.9	130.4 14.2	132.4 12.6	132.0 12.2	126.3 17.4	141.1 18.6	117.3 5.5	143.4 7.8
26	250.9 19.8	235.0 13.4	286.2 3.6	243.0 14.3	282.0 6.9	257.6 2.0	177.3 32.6	239.5 -4.8	297.4 4.6	312.9 12.0	323.1 6.1	305.7 11.1				
ULT	250.9 19.8	243.0 16.6	257.4 11.4	253.8 12.1	259.4 10.9	259.1 9.4	247.4 11.4	246.5 9.1	252.1 8.5	258.2 8.9	264.1 8.6	267.6 8.8	257.4 11.4	260.9 7.4	238.1 6.7	313.9 9.6
271-2	142.7 6.2	156.9 0.2	152.3 -18.2	143.0 -3.6	161.5 -4.7	142.3 -8.7	78.3 -8.2	123.7 -27.0	120.6 -21.8	132.3 -21.5	120.4 -28.6	84.3 -35.1				
ULT	142.7 6.2	149.8 3.0	150.6 -5.3	148.7 -4.9	151.3 -4.9	149.8 -5.5	139.6 -5.7	137.6 -8.7	135.7 -10.2	135.4 -11.4	134.0 -13.1	129.9 -14.7	150.6 -5.3	148.9 -5.7	107.6 -21.1	112.3 -27.8
273,5,9	83.5 3.4	77.3 12.9	88.5 6.1	82.4 22.6	100.4 14.3	84.4 10.4	48.0 19.7	89.6 -12.6	106.5 11.9	108.9 25.7	103.7 -4.3	80.3 5.8				
ULT	83.5 3.4	80.4 7.8	83.1 7.2	82.9 10.6	86.4 11.5	86.1 11.3	80.6 12.0	81.8 7.8	84.5 8.4	86.9 10.3	88.5 8.5	87.8 8.3	83.1 7.2	89.1 15.4	81.4 2.7	97.6 8.1
274	78.2 7.1	76.5 -4.2	73.4 -7.2	74.4 12.2	88.0 6.7	89.7 -0.7	51.3 72.0	66.1 -0.6	86.4 -0.4	99.4 8.5	100.4 1.7	80.9 -2.5				
ULT	78.2 7.1	77.3 1.2	76.0 -1.7	75.6 1.4	78.1 2.6	80.0 1.9	75.9 6.1	74.7 5.3	76.0 4.6	78.3 5.1	80.3 4.7	80.4 4.0	76.0 -1.7	84.0 5.4	67.9 11.3	93.6 2.7
27	106.4 6.0	110.4 0.8	109.8 -12.0	104.9 4.0	121.6 1.2	110.5 -3.6	61.9 11.7	95.6 -18.9	105.3 -10.0	115.3 -6.0	109.5 -13.9	82.2 -18.6				
ULT	106.4 6.0	108.4 3.3	108.9 -2.4	107.9 -0.9	110.6 -0.5	110.6 -1.0	103.7 -0.0	102.6 -2.7	102.9 -3.6	104.2 -3.8	104.7 -5.1	102.8 -6.2	108.9 -2.4	112.4 0.4	87.6 -9.5	102.3 -13.2

TAULU 1:  
TEOLLISUUSTUOTANNON VOLYYMI-INDEKSI V. 1996  
INDUSTRIPRODUKTIONS VOLYMINDEX ÅR 1996

(ENNAKKOTIETOJA)  
(FÖRHANDSUPPGIFTER)

NELJÄNNEKSET  
KVARTAL

TOL NI	TAMMI JAN	HELMI FEBR	MAALIS MARS	HUHTI APRIL	TOUKO MAJ	KESÄ JUNI	HEINÄ JULI	ELO AUG	SYYS SEPT	LOKA OKTOB	MARRAS NOVEMB	JOULU DEC	I	II	III	IV
29	93.9 -2.6	96.4 1.2	105.4 1.2	102.1 15.6	126.4 16.0	119.4 10.2	39.9 83.3	106.9 9.6	112.2 7.9	131.2 13.3	116.3 -1.0	79.8 7.7				
ULT %	93.9 -2.6	95.2 -0.7	98.6 -0.0	99.5 3.6	104.8 6.3	107.3 7.0	97.6 9.7	98.8 9.7	100.3 9.5	103.4 9.9	104.6 8.7	102.5 8.6	98.6 -0.0	115.9 13.9	86.3 16.0	109.1 6.5
D	117.9 4.2	112.3 2.9	122.9 -4.6	117.9 4.0	129.7 1.9	120.0 -2.7	93.8 11.3	119.3 -2.0	131.6 4.9	140.6 8.8	134.7 4.1	114.2 5.3				
ULT %	117.9 4.2	115.1 3.5	117.7 0.6	117.8 1.4	120.1 1.5	120.1 0.8	116.4 1.9	116.7 1.4	118.4 1.8	120.6 2.6	121.9 2.7	121.2 2.9	117.7 0.6	122.5 1.0	114.9 4.0	129.8 6.1
31	145.7 1.8	142.8 16.5	135.6 4.6	121.8 2.8	115.9 11.0	100.1 11.7	101.0 11.7	104.7 12.4	118.6 17.9	135.2 22.1	131.8 7.2	145.8 7.8				
ULT %	145.7 1.8	144.2 8.6	141.4 7.3	136.5 6.3	132.4 7.1	127.0 7.7	123.3 8.1	121.0 8.6	120.7 9.5	122.2 10.8	123.0 10.4	124.9 10.1	141.4 7.3	112.6 8.1	108.1 14.1	137.6 11.9
34	106.2 4.5	99.5 10.1	107.9 5.1	103.0 6.9	105.6 5.1	94.9 -0.4	92.1 -0.7	104.6 -0.2	99.4 1.6	102.9 0.0	99.2 -1.0	99.6 -2.9				
ULT %	106.2 4.5	102.9 7.1	104.6 6.4	104.2 6.5	104.4 6.2	102.8 5.2	101.3 4.4	101.7 3.8	101.5 3.5	101.6 3.2	101.4 2.8	101.2 2.3	104.6 6.4	101.1 3.9	98.7 0.3	100.5 -1.3
E	143.0 1.9	139.7 16.2	133.7 4.7	120.5 3.1	115.2 10.6	99.8 10.8	100.4 10.8	104.7 11.4	117.3 16.8	133.0 20.6	129.5 6.7	142.6 7.2				
ULT %	143.0 1.9	141.3 8.5	138.8 7.2	134.2 6.3	130.4 7.0	125.3 7.5	121.8 7.9	119.6 8.3	119.4 9.1	120.7 10.3	121.5 9.9	123.3 9.7	138.8 7.2	111.8 7.8	107.5 13.1	135.0 11.1
C,D,E %	119.6 3.9	114.1 4.2	123.1 -3.8	117.6 3.9	127.8 2.7	118.2 -1.7	94.7 10.2	118.9 -1.2	129.5 5.6	139.0 9.6	133.3 4.2	116.0 5.4				
ULT %	119.6 3.9	116.9 4.0	119.0 1.2	118.6 1.8	120.4 2.0	120.1 1.4	116.4 2.3	116.7 1.9	118.2 2.3	120.2 3.1	121.4 3.2	121.0 3.4	119.0 1.2	121.2 1.6	114.3 4.3	129.5 6.5
14,15 %	116.4 -7.8	107.0 -7.5	115.6 -12.1	114.5 -5.9	115.0 -8.0	103.1 -11.7	103.3 -4.4	117.5 -4.5	128.9 3.0	129.8 8.6	125.1 12.3	98.4 14.7				
ULT %	116.4 -7.8	111.7 -7.6	113.0 -9.2	113.4 -8.4	113.7 -8.3	111.9 -8.8	110.7 -8.3	111.6 -7.8	113.5 -6.6	115.1 -5.1	116.0 -3.6	114.6 -2.5	113.0 -9.2	110.9 -8.5	116.6 -1.8	117.8 11.6
23-27 %	147.1 11.9	142.1 8.8	156.8 -1.2	146.6 8.5	167.6 6.1	156.7 0.9	105.5 23.5	144.3 -2.7	169.2 6.0	179.8 11.1	178.0 3.3	155.9 3.6				
ULT %	147.1 11.9	144.6 10.3	148.7 6.0	148.2 6.6	152.0 6.5	152.8 5.5	146.1 7.1	145.8 5.8	148.4 5.8	151.6 6.4	154.0 6.1	154.1 5.9	148.7 6.0	157.0 5.0	139.7 6.5	171.2 6.0
MUU D %	96.6 2.5	92.0 1.9	100.2 -4.7	97.6 4.3	106.9 1.9	99.0 -2.6	81.1 9.8	101.1 0.1	104.2 4.4	115.4 6.2	105.8 1.6	89.0 3.7				
ULT %	96.6 2.5	94.3 2.2	96.3 -0.3	96.6 0.8	98.7 1.0	98.7 0.4	96.2 1.5	96.8 1.3	97.6 1.6	99.4 2.1	100.0 2.1	99.1 2.2	96.3 -0.3	101.2 1.1	95.5 4.3	103.4 3.9

TAULU 1:  
TEOLLISUUSTUOTANNON VOLYYMI-INDEKSI V. 1996  
INDUSTRIPRODUKTIONS VOLYMINDEX ÅR 1996

TOL NI	(ENNAKKOTIETOJA) (FÖRHANDSUPPGIFTER)												NELJÄNNEKSET KVARTAL			
	TAMMI JAN	HELMI FEBR	MAALIS MARS	HUHTI APRIL	TOUKO MAJ	KESÄ JUNI	HEINÄ JULI	ELO AUG	SYYS SEPT	LOKA OKTOB	MARRAS NOVEMB	JOULU DEC	I	II	III	IV
I	166.6 12.1	161.1 7.6	175.1 -0.0	168.2 7.6	193.7 6.1	188.1 0.4	124.2 23.2	166.5 -2.5	195.7 7.8	208.6 14.1	210.1 6.1	180.9 1.4				
ULT %	166.6 12.1	163.8 9.9	167.6 6.2	167.7 6.6	172.9 6.5	175.5 5.3	168.1 7.0	167.9 5.7	171.0 6.0	174.8 6.9	178.0 6.8	178.2 6.3	167.6 6.2	183.3 4.6	162.1 7.4	199.9 7.2
CO	98.4 5.5	94.8 5.4	101.6 -2.8	97.4 5.7	106.1 2.9	98.0 -1.2	77.4 13.2	97.3 -1.0	102.3 3.9	113.7 5.7	105.5 -1.1	91.4 0.4				
ULT %	98.4 5.5	96.6 5.5	98.3 2.5	98.0 3.3	99.7 3.2	99.4 2.4	96.3 3.6	96.4 3.0	97.1 3.1	98.7 3.4	99.3 2.9	98.7 2.7	98.3 2.5	100.5 2.4	92.4 4.5	103.5 1.7
R	115.9 1.4	109.8 2.8	118.6 -5.2	112.8 2.3	120.7 1.8	110.3 -2.6	93.2 6.4	115.3 -1.0	125.1 5.8	132.6 10.3	127.4 6.3	111.3 8.9				
ULT %	115.9 1.4	112.9 2.1	114.8 -0.5	114.3 0.1	115.6 0.5	114.7 -0.0	111.6 0.7	112.1 0.5	113.5 1.1	115.4 2.1	116.5 2.5	116.1 3.0	114.8 -0.5	114.6 0.5	111.2 3.5	123.8 8.5

TAULU 2:  
TEOLLISUUSTUOTANNON VOLYYMI-INDEKSI TYÖPÄIVÄÄ KOHTI V. 1996  
INDUSTRIPRODUKTIONS VOLYMINDEKSI PER ARBETSDAG ÅR 1996

NELJÄNNEKSET  
KVARTAL

(ENNAKKOTIETOJA)  
(FÖRHANDSUPPGIFTER)

TOL NI	TAMMI JAN	HELMI FEBR	MAALIS MARS	HUHTI APRIL	TOUKO MAJ	KESÄ JUNI	HEINÄ JULI	ELO AUG	SYYS SEPT	LOKA OKTOB	MARRAS NOVEMB	JOULU DEC	I	II	III	IV		
07	%	79.7 -8.2	78.6 -7.0	83.5 -13.0	99.3 20.3	94.1 32.9	86.3 6.8	85.7 6.0	68.7 11.6	56.2 -39.3	77.4 18.6	76.0 0.6	79.0 3.2	80.4 1.1	80.6 -9.5	93.2 19.4	70.2 -10.4	77.5 6.9
09	%	67.5 7.6	55.5 -9.3	57.0 -15.1	66.4 -1.9	80.3 14.8	151.8 3.7	118.5 -41.0	225.1 -9.4	78.9 4.6	64.1 -9.6	52.9 -6.6	61.4 -13.2	80.8 1.2	80.6 -5.8	93.2 5.1	70.2 -19.5	77.5 -10.0
C	%	71.0 1.8	62.2 -8.5	64.7 -14.3	75.9 5.4	84.3 20.1	132.7 4.3	108.9 -34.3	179.6 -7.5	72.3 -10.1	68.0 -1.9	59.6 -4.1	66.5 -8.1	89.9 -10.1	60.0 -5.8	99.5 5.1	140.8 -19.5	59.5 -10.0
111-5	%	99.9 4.0	100.9 2.8	109.2 8.3	120.6 7.5	118.3 6.5	125.3 10.1	91.9 8.0	105.8 7.6	115.0 9.2	127.7 2.5	114.4 8.1	126.3 3.7	112.9 6.5	103.4 5.0	121.4 8.0	104.2 8.3	122.8 4.6
116	%	106.0 3.3	93.1 -2.7	93.8 -2.6	110.1 8.3	111.8 -1.5	118.6 -6.0	111.2 -7.7	106.5 6.1	84.2 -1.7	83.1 -11.0	106.4 4.3	79.5 -11.1	99.8 -2.4	97.7 -0.5	113.5 -0.2	100.6 -1.5	89.7 -5.5
117	%	59.4 0.6	39.0 -25.5	71.7 -9.0	84.7 -0.8	100.5 -6.6	102.6 -0.2	48.7 198.4	85.0 -10.6	101.9 25.8	98.9 22.7	40.8 -28.9	78.3 -3.0	99.8 -2.4	97.7 -0.5	113.5 -0.2	100.6 -1.5	89.7 -5.5
119	%	59.4 0.6	49.2 -11.7	56.7 -10.6	63.7 -7.5	71.1 -7.3	76.3 -5.8	72.4 0.9	74.0 -1.0	77.1 2.2	79.2 4.4	76.0 1.6	79.2 3.7	56.7 -10.6	95.9 -2.7	78.5 22.5	72.7 -0.3	
119	%	108.1 -16.6	96.4 3.3	103.9 -7.2	115.1 -0.8	125.1 -5.2	121.4 3.7	109.0 -10.6	107.8 -12.4	108.1 1.7	110.2 5.9	123.7 -1.5	108.6 0.1	110.4 -4.0	102.8 -7.9	120.6 -1.0	108.3 -7.5	114.2 1.3
11	%	99.1 2.9	95.8 1.0	103.8 4.8	116.1 7.1	115.7 4.0	121.9 6.2	93.8 4.6	104.3 5.4	107.4 7.8	116.3 1.4	109.2 6.1	113.7 1.2	108.1 4.4	99.6 2.9	117.9 5.7	101.8 6.0	113.1 2.8
12	%	93.5 4.6	90.9 -6.7	89.4 -6.3	91.7 -9.3	98.5 -0.3	91.9 -3.4	42.3 27.5	99.3 3.1	100.5 5.8	107.0 17.7	83.2 7.6	100.7 5.0	108.0 4.2	99.6 2.9	117.9 5.7	101.8 6.0	113.1 2.8
ULT	%	93.5 4.6	92.2 -1.3	91.3 -3.0	91.4 -4.7	92.8 -3.8	92.6 -3.7	85.4 -2.0	87.2 -1.3	88.7 -0.5	90.5 1.4	90.7 2.1	91.4 1.7	91.3 -3.0	94.0 -4.4	80.7 7.8	97.0 10.1	

TAULU 2:  
TEOLLISUUSTUOTANNON VOLYYMI-INDEKSI TYÖPÄIVÄÄ KOHTI V. 1996  
INDUSTRIPRODUKTIONS VOLYMINDEKX PER ARBETSDAG ÅR 1996

TOL NI		(ENNAKKOTIETOJA) (FÖRHANDSUPPGIFTER)												NELJÄNNEKSET KVARTAL			
		TAMMI JAN	HELMI FEBR	MAALIS MARS	HUHTI APRIL	TOUKO MAJ	KESÄ JUNI	HEINÄ JULI	ELO AUG	SYYS SEPT	LOKA OKTOB	MARRAS NOVEMB	JOULU DEC	I	II	III	IV
131	%	48.6 -17.4	50.5 -9.9	38.1 -2.7	39.1 -10.8	58.9 -11.6	50.5 -1.2	27.0 19.7	57.6 -13.2	63.5 -6.3	48.7 -6.9	45.0 -4.4	40.6 -5.1				
	ULT %	48.6 -17.4	49.5 -13.8	45.7 -11.0	44.1 -10.9	47.0 -11.1	47.6 -9.5	44.7 -7.5	46.3 -8.5	48.2 -8.2	48.2 -8.0	47.9 -7.7	47.3 -7.5	45.7 -11.0	49.5 -8.1	49.3 -5.5	44.8 -5.5
132	%	51.1 -10.6	41.6 -26.8	51.7 -12.2	53.2 -11.4	48.7 -6.1	51.2 -9.7	3.2 -20.3	42.0 -8.1	52.9 6.7	47.1 -2.2	42.4 -15.2	32.7 -22.5				
	ULT %	51.1 -10.6	46.4 -18.7	48.1 -16.5	49.4 -15.2	49.3 -13.5	49.6 -12.9	42.9 -13.0	42.8 -12.4	43.9 -10.3	44.3 -9.5	44.1 -10.0	43.1 -10.9	48.1 -16.5	51.0 -9.2	32.7 -1.2	40.7 -12.9
133	%	98.2 3.7	86.8 -13.4	89.4 -0.8	74.9 -1.7	89.7 3.0	80.9 9.7	13.5 28.0	98.2 -5.3	95.9 -5.5	91.7 -6.8	95.8 -4.8	66.5 0.4				
	ULT %	98.2 3.7	92.5 -5.1	91.5 -3.7	87.3 -3.3	87.8 -2.1	86.7 -0.4	76.2 0.1	78.9 -0.7	80.8 -1.4	81.9 -2.0	83.2 -2.3	81.8 -2.2	91.5 -3.7	81.8 3.6	69.2 -3.8	84.7 -4.2
13	%	58.2 -11.2	56.7 -12.0	48.8 -2.8	46.9 -8.3	64.0 -7.8	56.3 0.9	22.7 20.0	64.2 -10.8	68.9 -5.5	56.8 -6.6	54.4 -5.2	45.0 -4.7				
	ULT %	58.2 -11.2	57.4 -11.6	54.6 -9.2	52.7 -9.0	54.9 -8.7	55.2 -7.2	50.5 -5.8	52.2 -6.6	54.1 -6.5	54.3 -6.5	54.4 -6.4	53.6 -6.3	54.6 -9.2	55.7 -5.2	51.9 -4.9	52.1 -5.6
14	%	106.9 -7.4	91.6 -10.7	110.9 -0.8	119.7 -1.0	110.9 -0.4	127.5 3.7	51.8 3.8	105.6 8.5	136.2 3.6	112.5 5.1	117.7 15.6	97.5 17.9				
	ULT %	106.9 -7.4	99.2 -8.9	103.1 -6.2	107.3 -4.8	108.0 -3.9	111.2 -2.6	102.8 -2.1	103.1 -0.9	106.8 -0.3	107.4 0.3	108.3 1.6	107.4 2.7	103.1 -6.2	119.4 0.8	97.9 5.3	109.2 12.4
15	%	114.2 -9.8	117.2 -11.2	113.8 -12.6	118.8 -9.8	116.5 -10.7	104.0 -14.0	119.3 -8.0	116.2 -7.3	125.1 2.9	127.6 7.8	128.0 13.5	114.2 16.4				
	ULT %	114.2 -9.8	115.7 -10.5	115.0 -11.2	116.0 -10.8	116.1 -10.8	114.1 -11.3	114.8 -10.8	115.0 -10.4	116.1 -9.0	117.3 -7.4	118.2 -5.7	117.9 -4.2	115.0 -11.2	113.1 -11.4	120.2 -4.3	123.3 12.3
16	%	83.5 5.2	86.7 -1.9	93.2 -0.7	93.5 -3.2	97.1 -0.5	84.4 -0.0	65.4 -1.0	79.1 -2.4	92.0 -1.6	93.8 -2.7	95.8 -2.3	100.9 -0.9				
	ULT %	83.5 5.2	85.1 1.4	87.8 0.7	89.2 -0.4	90.8 -0.4	89.7 -0.3	86.3 -0.4	85.4 -0.6	86.1 -0.8	86.9 -1.0	87.7 -1.1	88.8 -1.1	87.8 0.7	91.7 -1.3	78.8 -1.7	96.9 -1.9
17	%	83.6 -8.6	79.3 -6.7	84.4 -1.3	88.2 -4.9	87.1 -10.4	104.1 0.2	32.5 19.1	101.1 8.4	104.7 11.9	102.4 10.5	103.6 17.5	88.3 24.2				
	ULT %	83.6 -8.6	81.4 -7.7	82.4 -5.6	83.9 -5.4	84.5 -6.5	87.8 -5.2	79.9 -4.1	82.5 -2.4	85.0 -0.6	86.7 0.6	88.3 2.1	88.3 3.7	82.4 -5.6	93.1 -4.9	79.4 11.3	98.1 16.8
181-4	%	118.8 -7.5	127.7 -5.9	128.6 -4.5	131.4 -1.0	126.2 6.8	114.7 -0.7	115.2 -2.0	108.9 -1.9	127.7 7.1	131.5 9.9	133.5 14.5	132.5 16.2				
	ULT %	118.8 -7.5	123.2 -6.7	125.0 -5.9	126.6 -4.7	126.5 -2.6	124.5 -2.3	123.2 -2.3	121.4 -2.3	122.1 -1.2	123.1 -0.2	124.0 1.1	124.7 2.3	125.0 -5.9	124.1 1.6	117.3 1.2	132.5 13.5

TAULU 2:  
TEOLLISUUSTUOTANNON VOLYYMI-INDEXI TYÖPÄIVÄÄ KOHTI V. 1996  
INDUSTRIPRODUKTIONS VOLYMINDEK PER ARBETSDAG AR 1996

TOL NI	(ENNAKKOTIETOJA) (FÖRHANDSUPPGIFTER)												NELJÄNNEKSET KVARTAL			
	TAMMI JAN	HELMI FEBR	MAALIS MARS	HUHTI APRIL	TOUKO MAJ	KESÄ JUNI	HEINÄ JULI	ELO AUG	SYYS SEPT	LOKA OKTOB	MARRAS NOVEMB	JOULU DEC	I	II	III	IV
185-%	95.9 -10.9	97.2 -11.5	102.3 -6.4	103.7 -1.0	106.2 -6.1	108.1 -0.6	63.3 1.0	88.2 -5.5	92.7 -8.5	95.3 -9.1	95.2 -2.5	98.0 4.0				
ULT %	95.9 -10.9	96.5 -11.2	98.4 -9.6	99.8 -7.5	101.0 -7.2	102.2 -6.1	96.6 -5.5	95.6 -5.5	95.3 -5.8	95.3 -6.2	95.3 -5.9	95.5 -5.1	98.4	106.0	81.4	96.2 -2.8
18	109.0 -8.8	114.7 -8.0	117.4 -5.2	119.6 -1.0	117.7 1.4	111.9 -0.7	93.1 -1.2	100.1 -3.3	112.8 1.1	116.1 2.4	117.2 8.0	117.9 11.6				
ULT %	109.0 -8.8	111.9 -8.4	113.7 -7.3	115.2 -5.8	115.7 -4.4	115.0 -3.8	111.9 -3.5	110.4 -3.5	110.7 -3.0	111.2 -2.4	111.8 -1.5	112.3 -0.5	113.7	116.4	102.0	117.1 7.2
191	121.4 1.3	127.0 7.6	135.0 2.8	103.4 4.9	118.5 17.2	139.4 6.7	135.4 9.7	132.0 9.0	138.6 9.4	140.8 15.6	158.2 23.6	121.4 4.4				
ULT %	121.4 1.3	124.2 4.5	127.8 3.9	121.7 4.1	121.1 6.4	124.1 6.5	125.7 7.0	126.5 7.2	127.9 7.5	129.2 8.3	131.8 9.8	130.9 9.4	127.8	120.5	135.3	140.1 14.9
192	70.2 6.1	70.3 9.0	78.0 -2.8	87.9 7.3	113.8 -1.0	131.7 16.7	116.5 7.3	115.5 14.2	124.7 16.4	110.1 6.8	84.9 -7.7	69.7 24.1				
ULT %	70.2 6.1	70.2 7.5	72.8 3.6	76.6 4.6	84.0 3.1	92.0 6.0	95.5 6.2	98.0 7.3	100.9 8.5	101.9 8.3	100.3 6.9	97.8 7.8	72.8	111.1	118.9	88.2 5.3
19	119.2 1.6	124.2 7.4	131.9 2.1	106.4 4.7	123.8 13.1	143.8 7.6	138.2 8.8	135.5 9.1	141.9 10.0	141.7 13.2	152.3 18.7	117.3 5.8				
ULT %	119.2 1.6	121.7 4.5	125.1 3.6	120.4 3.9	121.1 5.6	124.9 6.0	126.8 6.4	127.9 6.8	129.4 7.2	130.7 7.8	132.6 8.8	131.4 8.6	125.1	124.7	138.5	137.1 12.9
211	151.1 12.4	137.5 -3.3	161.5 15.0	149.3 4.0	147.6 -4.9	132.8 -5.7	51.8 -34.7	135.3 -4.9	132.5 -9.5	131.2 -13.6	131.1 -9.7	124.5 -5.8				
ULT %	151.1 12.4	144.3 4.4	150.0 7.9	149.9 6.9	149.4 4.4	146.6 2.7	133.1 -0.5	133.4 -1.0	133.3 -2.1	133.1 -3.3	132.9 -3.9	132.2 -4.1	150.0	143.2	106.5	128.9 -9.9
212	99.5 -5.6	103.3 -2.1	105.5 -1.2	110.4 3.2	111.9 -2.5	117.2 4.3	55.7 2.5	103.6 8.3	112.6 4.9	118.3 5.0	108.5 2.7	90.9 11.3				
ULT %	99.5 -5.6	101.4 -3.8	102.8 -2.9	104.7 -1.4	106.1 -1.6	108.0 -0.6	100.5 -0.4	100.9 0.7	102.2 1.2	103.8 1.6	104.2 1.7	103.1 2.3	102.8	113.2	90.6	105.9 5.9
21	107.0 -2.4	108.3 -2.3	113.7 1.7	116.0 3.3	117.1 -3.0	119.4 2.5	55.1 -4.9	108.2 5.7	115.5 2.2	120.2 1.5	111.8 0.4	95.8 7.6				
ULT %	107.0 -2.4	107.6 -2.3	109.6 -1.0	111.2 0.1	112.4 -0.5	113.6 -0.0	105.2 -0.4	105.6 0.3	106.7 0.6	108.1 0.7	108.4 0.6	107.3 1.1	109.6	117.5	92.9	109.3 2.8
221	130.2 6.1	105.2 -3.7	118.9 -12.1	127.4 8.2	133.7 8.9	130.1 3.8	73.3 -1.4	117.1 2.4	133.0 1.2	123.5 4.9	113.4 -12.3	98.7 0.1				
ULT %	130.2 6.1	117.7 1.5	118.1 -3.5	120.4 -0.7	123.1 1.3	124.3 1.7	117.0 1.4	117.0 1.5	118.8 1.5	119.2 1.8	118.7 0.4	117.0 0.4	118.1	130.4	107.8	111.8 -2.9

TAULU 2:  
TEOLLISUUSTUOTANNON VOLYYMI-INDEKSI TYÖPÄIVÄÄ KOHTI V. 1996  
INDUSTRIPRODUKTIONS VOLYMINDEKX PER ARBETSDAG ÅR 1996

TOL NI	(ENNAKKOTIETOJA) (FÖRHANDSUPPGIFTER)												NELJÄNNEKSET KVARTAL				
	TAMMI JAN	HELMI FEBR	MAALIS MARS	HUHTI APRIL	TOUKO MAJ	KESÄ JUNI	HEINÄ JULI	ELO AUG	SYYS SEPT	LOKA OKTOB	MARRAS NOVEMB	JOULU DEC	I	II	III	IV	
222	%	68.8 6.7	57.7 -20.7	67.4 -22.5	61.1 -28.4	58.2 -26.6	68.1 -10.4	12.7 10.8	60.8 -17.2	85.0 -1.4	87.1 7.3	81.1 -2.0	64.6 15.0				
ULT	%	68.8 6.7	63.2 -7.8	64.6 -13.5	63.7 -17.6	62.6 -19.5	63.6 -18.0	56.3 -17.3	56.8 -17.3	60.0 -15.1	62.7 -12.6	64.4 -11.5	64.4 -9.8	64.6 -13.5	62.5 -22.1	52.8 -7.4	77.6 5.8
223-9	%	60.2 4.9	57.5 -4.2	61.0 -0.6	70.3 -4.0	82.9 2.2	85.1 1.0	65.1 18.3	84.6 4.8	87.1 8.8	90.0 14.3	75.6 18.0	64.6 22.7				
ULT	%	60.2 4.9	58.9 0.2	59.6 -0.1	62.2 -1.2	66.4 -0.4	69.5 -0.1	68.9 2.0	70.8 2.4	72.6 3.3	74.4 4.5	74.5 5.6	73.7 6.7	59.6 -0.1	79.4 -0.1	78.9 9.7	76.8 17.8
22	%	69.1 5.3	63.3 -5.2	68.3 -4.8	76.6 -3.4	87.4 1.7	89.5 0.9	62.8 15.0	87.1 3.2	92.5 6.8	93.8 12.3	80.5 10.2	68.7 17.7				
ULT	%	69.1 5.3	66.2 -0.0	66.9 -1.7	69.3 -2.2	72.9 -1.3	75.7 -0.9	73.9 0.8	75.5 1.2	77.4 1.9	79.0 3.0	79.2 3.6	78.3 4.6	66.9 -1.7	84.5 -0.2	80.8 7.5	81.0 13.1
231	%	155.5 0.8	148.1 -3.5	149.1 -5.0	157.5 6.3	149.3 5.9	144.4 6.6	114.8 14.5	139.8 18.0	161.8 17.9	160.9 10.0	169.3 11.1	161.4 17.0	150.9 -2.6	150.4 6.2	138.8 16.9	163.9 12.6
ULT	%	155.5 0.8	151.8 -1.4	150.9 -2.6	152.5 -0.5	151.9 0.7	150.6 1.6	145.5 2.9	144.8 4.5	146.7 6.0	148.1 6.4	150.0 6.9	151.0 7.7	150.9 -2.6	150.4 6.2	138.8 16.9	163.9 12.6
232	%	126.7 3.3	132.4 18.9	143.0 15.3	135.7 17.7	144.5 42.8	150.1 65.9	98.9 20.4	124.9 14.1	138.2 10.2	150.8 14.6	135.8 11.6	130.3 21.6				
ULT	%	126.7 3.3	129.6 10.8	134.1 12.3	134.5 13.7	136.5 18.8	138.8 25.2	133.1 24.7	132.1 23.3	132.7 21.6	134.5 20.8	134.7 19.9	134.3 20.0	134.1 12.3	143.5 40.2	120.7 14.2	139.0 15.7
233	%	137.0 5.8	124.8 -0.1	123.8 -10.8	131.3 -10.4	129.2 -13.4	133.1 -8.8	31.0 -1.2	144.8 -1.8	132.6 -6.2	130.7 -10.9	126.8 -11.0	107.2 -2.1				
ULT	%	137.0 5.8	130.9 2.9	128.6 -1.9	129.2 -4.2	129.2 -6.2	129.9 -6.7	115.8 -6.5	119.4 -5.8	120.9 -5.8	121.8 -6.4	122.3 -6.9	121.0 -6.5	128.6 -1.9	131.2 -10.9	102.8 -3.7	121.6 -8.5
23	%	145.7 1.9	141.1 1.5	144.3 -1.3	148.5 6.5	145.5 10.4	144.4 15.3	99.9 15.2	136.6 13.9	151.9 12.8	154.4 8.3	155.2 8.4	146.4 15.9				
ULT	%	145.7 1.9	143.4 1.7	143.7 0.7	144.9 2.1	145.0 3.7	144.9 5.5	138.5 6.4	138.2 7.3	139.8 7.9	141.2 7.9	142.5 8.0	142.8 8.6	143.7 0.7	146.1 10.6	129.5 13.8	152.0 10.7
24	%	100.0 2.1	100.2 3.5	110.4 11.9	106.4 -0.1	116.1 0.3	119.3 9.3	57.5 6.0	105.5 9.3	125.6 7.0	120.2 7.4	125.0 5.3	91.0 14.5				
ULT	%	100.0 2.1	100.1 2.8	103.5 5.9	104.3 4.3	106.6 3.4	108.7 4.4	101.4 4.5	101.9 5.1	104.6 5.4	106.1 5.6	107.8 5.6	106.4 6.2	103.5 5.9	113.9 3.1	96.2 7.6	112.1 8.4
251	%	103.6 3.8	105.6 6.0	107.0 -4.3	113.6 -1.7	127.6 0.4	141.9 7.6	78.2 10.7	109.9 1.0	117.3 4.4	122.9 13.7	125.8 2.0	143.3 2.7				
ULT	%	103.6 3.8	104.6 4.9	105.4 1.6	107.4 0.7	111.5 0.6	116.5 2.0	111.1 2.8	110.9 2.6	111.6 2.8	112.8 3.9	113.9 3.7	116.4 3.6	105.4 1.6	127.7 2.3	101.8 4.7	130.6 5.7



TAULU 2:  
TEOLLISUUSTUOTANNON VOLYYMI-INDEKSI TYÖPÄIVÄÄ KOHTI V. 1996  
INDUSTRIPRODUKTIONS VOLYMINDEKSI PER ARBETSDAG ÅR 1996

(ENNAKKOTIETOJA)  
(FÖRHANDSUPPGIFTER)

NELJÄNNEKSET  
KVARTAL

TOL NI	TAMMI JAN	HELMI FEBR	MAALIS MARS	HUHTI APRIL	TOUKO MAJ	KESÄ JUNI	HEINÄ JULI	ELO AUG	SYYS SEPT	LOKA OKTOB	MARRAS NOVEMB	JOULU DEC	I	II	III	IV
29	89.5 -7.4	96.2 -4.0	105.2 10.4	107.7 9.3	126.1 15.6	131.7 21.3	36.4 66.7	101.8 14.1	112.0 7.5	119.5 7.9	116.1 3.4	94.7 13.3				
ULT	89.5	92.9	97.0	99.6	104.9	109.4	99.0	99.3	100.7	102.6	103.8	103.1	97.0	121.8	83.4	110.1
%	-7.4	-5.7	-0.4	2.0	5.0	7.9	9.9	10.5	10.1	9.8	9.1	9.4	-0.4	15.6	16.2	7.7
D	113.3	113.5	121.4	123.8	129.1	130.2	87.5	114.2	131.5	130.7	134.7	129.7				
%	0.9	-1.7	1.2	0.4	1.8	4.1	5.2	0.8	4.7	5.3	7.3	9.0				
ULT	113.3	113.4	116.1	118.0	120.2	121.9	117.0	116.7	118.3	119.5	120.9	121.7	116.1	127.7	111.1	131.7
%	0.9	-0.4	0.1	0.2	0.5	1.1	1.6	1.5	1.9	2.2	2.7	3.2	0.1	2.1	3.5	7.2
31	142.5	149.3	132.7	123.1	116.1	106.2	98.8	102.4	119.9	132.2	133.2	142.8				
%	2.1	12.9	4.9	3.1	13.9	9.2	12.0	12.7	18.3	22.4	7.5	8.1				
ULT	142.5	145.9	141.5	136.9	132.7	128.3	124.1	121.4	121.2	122.3	123.3	124.9	141.5	115.1	107.0	136.1
%	2.1	7.3	6.6	5.8	7.1	7.4	7.9	8.4	9.4	10.7	10.3	10.1	6.6	8.4	14.5	12.1
34	104.5	104.7	106.2	104.7	103.9	96.4	90.6	103.0	101.1	101.2	100.8	98.0				
%	4.8	6.6	5.4	7.2	5.4	-0.1	-0.4	0.1	1.9	0.3	-0.7	-2.7				
ULT	104.5	104.6	105.1	105.0	104.8	103.4	101.6	101.7	101.7	101.6	101.6	101.3	105.1	101.7	98.2	100.0
%	4.8	5.7	5.6	6.0	5.9	4.9	4.2	3.6	3.5	3.1	2.8	2.3	5.6	4.2	0.5	-1.0
E	139.9	146.1	130.8	121.8	115.2	105.5	98.2	102.4	118.6	130.1	131.0	139.7				
%	2.2	12.5	5.0	3.4	13.3	8.6	11.1	11.7	17.2	20.9	7.0	7.5				
ULT	139.9	143.0	138.9	134.7	130.8	126.6	122.5	120.0	119.9	120.9	121.8	123.3	138.9	114.2	106.4	133.6
%	2.2	7.2	6.5	5.8	7.0	7.2	7.7	8.1	9.0	10.2	9.9	9.6	6.5	8.2	13.5	11.4
C,D,E	115.2	115.8	121.6	123.0	127.3	128.0	88.8	114.0	129.5	129.8	133.5	129.7				
%	1.0	-0.4	1.4	0.7	2.8	4.4	4.7	1.4	5.5	6.5	7.1	8.8				
ULT	115.2	115.5	117.5	118.9	120.6	121.8	117.1	116.7	118.1	119.3	120.6	121.4	117.5	126.1	110.8	131.0
%	1.0	0.3	0.7	0.7	1.1	1.7	2.0	1.9	2.4	2.8	3.2	3.7	0.7	2.6	3.9	7.5
14,15	111.9	109.2	112.9	119.1	114.7	111.3	98.3	112.9	128.6	122.9	124.8	109.0				
%	-9.1	-11.0	-9.3	-7.2	-7.8	-8.4	-6.3	-3.2	3.1	7.0	14.1	16.8				
ULT	111.9	110.6	111.3	113.3	113.6	113.2	111.1	111.3	113.2	114.2	115.2	114.6	111.3	115.0	113.3	118.9
%	-9.1	-10.1	-9.8	-9.1	-8.9	-8.8	-8.5	-7.9	-6.6	-5.3	-3.7	-2.3	-9.8	-7.8	-1.9	12.3
23-27	140.6	142.6	156.2	154.7	167.2	171.7	97.0	137.9	169.1	165.0	178.0	180.8				
%	7.0	3.4	6.9	3.2	5.8	10.1	13.6	1.0	5.7	6.4	7.4	8.3				
ULT	140.6	141.6	146.5	148.5	152.3	155.5	147.1	146.0	148.6	150.2	152.7	155.1	146.5	164.5	134.7	174.6
%	7.0	5.2	5.8	5.1	5.2	6.1	6.8	6.0	6.0	6.0	6.2	6.4	5.8	6.4	5.8	7.4
MUU D	93.3	93.3	98.7	102.4	106.2	106.5	76.1	96.9	104.2	107.9	106.1	99.5				
%	-0.3	-2.5	0.2	1.2	1.8	3.2	4.4	2.5	4.3	3.3	4.1	6.8				
ULT	93.3	93.3	95.1	96.9	98.8	100.1	96.6	96.7	97.5	98.5	99.2	99.3	95.1	105.0	92.4	104.5
%	-0.3	-1.4	-0.9	-0.3	0.1	0.6	1.0	1.2	1.6	1.8	2.0	2.4	-0.9	2.0	3.7	4.7

TAULU 2:  
TEOLLISUUSTUOTANNON VOLYYMI-INDEKSI TYÖPÄIVÄÄ KOHTI V. 1996  
INDUSTRIPRODUKTIONS VOLYMINDEX PER ARBETSDAG ÅR 1996

TOL NI	(ENNAKKOTIETOJA) (FÖRHANDSUPPGIFTER)												NELJÄNNEKSET KVARTAL			
	TAMMI JAN	HELMI FEBR	MAALIS MARS	HUHTI APRIL	TOUKO MAJ	KESÄ JUNI	HEINÄ JULI	ELO AUG	SYYS SEPT	LOKA OKTOB	MARRAS NOVEMB	JOULU DEC	I	II	III	IV
I	158.8 6.7	160.9 2.1	174.8 9.0	177.8 1.8	193.5 5.8	207.5 10.5	113.3 12.2	158.7 1.5	195.4 7.4	190.3 8.8	209.8 10.7	212.5 6.6				
ULT	158.8 6.7	159.9 4.3	164.9 5.9	168.1 4.8	173.2 5.0	178.9 6.0	169.5 6.6	168.2 6.0	171.2 6.1	173.1 6.4	176.5 6.9	179.5 6.8	164.9 5.9	192.9 6.1	155.8 6.4	204.2 8.7
CO	94.8 2.4	95.9 0.7	100.2 2.9	102.3 2.1	105.7 3.0	106.2 5.2	72.2 6.9	93.1 1.8	102.3 3.8	105.8 2.5	105.6 1.6	102.6 3.9				
ULT	94.8 2.4	95.4 1.5	97.0 2.0	98.3 2.0	99.8 2.2	100.9 2.7	96.8 3.2	96.3 3.0	97.0 3.1	97.9 3.0	98.6 2.9	98.9 3.0	97.0 2.0	104.8 3.4	89.2 3.9	104.7 2.6
R	111.8 -0.8	112.0 -1.4	116.8 -0.9	117.5 -0.2	120.1 1.9	118.7 2.4	88.2 2.4	110.8 1.2	125.3 5.8	124.8 7.8	127.6 8.8	122.6 11.8				
ULT	111.8 -0.8	111.9 -1.1	113.5 -1.0	114.5 -0.8	115.6 -0.3	116.2 0.2	112.2 0.4	112.0 0.5	113.5 1.1	114.6 1.8	115.8 2.5	116.4 3.2	113.5 -1.0	118.8 1.4	108.1 3.3	125.0 9.4

TAULU 1:  
TEOLLISUUSTUOTANNON VOLYYMI-INDEKSI V. 1997  
INDUSTRIPRODUKTIONS VOLYMINDEX ÅR 1997

(ENNAKKOTIETOJA)  
(FÖRHÅNDSUPPGIFTER)

NELJÄNNEKSET  
KVARTAL

TOL NI	TAMMI JAN	HELMI FEBR	MAALIS MARS	HUHTI APRIL	TOUKO MAJ	I
07	80.3 -1.7	81.5 8.1	90.3 5.5	96.2 -1.5	98.0 2.1	
ULT	80.3	80.9	84.0	87.0	89.2	84.0
%	-1.7	3.0	3.9	2.4	2.3	3.9
09	62.5 -10.3	60.9 12.3	70.5 21.9	70.6 10.6	77.3 -5.1	
ULT	62.5	61.7	64.6	66.1	68.4	64.6
%	-10.3	-0.4	6.7	7.7	4.5	6.7
C	67.7 -7.5	66.9 10.8	76.2 15.7	78.1 5.9	83.3 -2.7	
ULT	67.7	67.3	70.3	72.2	74.4	70.3
%	-7.5	0.8	5.7	5.8	3.7	5.7
111-5	110.4 6.0	105.5 4.7	106.6 -3.2	120.0 4.9	114.4 -3.8	
ULT	110.4	107.9	107.5	110.6	111.4	107.5
%	6.0	5.4	2.4	3.1	1.6	2.4
116	108.6 -0.9	86.7 -5.7	87.0 -9.0	107.6 2.4	106.4 -5.2	
ULT	108.6	97.6	94.1	97.5	99.3	94.1
%	-0.9	-3.1	-5.0	-3.0	-3.5	-5.0
117	67.0 7.2	54.3 38.8	76.9 6.8	104.2 31.5	106.7 5.8	
ULT	67.0	60.6	66.1	75.6	81.8	66.1
%	7.2	19.4	14.2	19.6	15.7	14.2
119	109.1 -2.7	94.8 -1.1	107.7 2.0	112.8 5.4	113.3 -9.9	
ULT	109.1	101.9	103.8	106.1	107.5	103.8
%	-2.7	-2.0	-0.7	0.9	-1.6	-0.7
11	107.2 3.9	98.4 3.1	100.8 -3.9	115.6 5.0	111.5 -4.1	
ULT	107.2	102.8	102.1	105.5	106.7	102.1
%	3.9	3.5	1.0	2.0	0.7	1.0
12	95.4 -1.5	89.4 -1.0	88.6 -2.7	107.9 25.5	98.0 -1.7	
ULT	95.4	92.4	91.1	95.3	95.8	91.1
%	-1.5	-1.3	-1.7	4.7	3.3	-1.7

TAULU 1:  
TEOLLISUUSUUTUONNON VOLYYMI-INDEKSI V. 1997  
INDUSTRIPRODUKTIONS VOLYMINDEX ÅR 1997

(ENNAKKOTIETOJA)  
(FÖRHANDSUPPGIFTER)

NELJÄNNEKSET  
KVARTAL

I

TOL NI	TAMMI JAN	HELMI FEBR	MAALIS MARS	HUHTI APRIL	TOUKO MAJ
131	50.9 -0.1	44.9 -11.0	33.9 -11.1	39.7 7.2	57.3 -2.9
ULT	50.9 -0.1	47.9 -5.5	43.2 -7.1	42.4 -4.1	45.3 -3.8
132	50.6 -5.8	36.5 -12.6	45.8 -11.6	53.8 7.8	52.0 6.3
ULT	50.6 -5.8	43.5 -8.8	44.3 -9.7	46.7 -5.3	47.7 -3.0
133	99.3 -3.6	75.3 -13.5	72.3 -19.4	82.5 17.0	78.9 -12.2
ULT	99.3 -3.6	87.3 -8.1	82.3 -11.7	82.3 -6.0	81.6 -7.2
13	60.1 -1.6	50.1 -11.8	42.0 -14.0	48.8 10.3	61.0 -4.9
ULT	60.1 -1.6	55.1 -6.5	50.7 -8.7	50.3 -4.7	52.4 -4.8
14	126.0 12.6	102.1 11.4	115.1 2.9	139.0 24.9	122.3 10.0
ULT	126.0 12.6	114.1 12.0	114.4 8.8	120.6 13.0	120.9 12.4
15	135.5 14.4	125.2 10.0	136.3 16.3	133.8 15.4	139.0 19.2
ULT	135.5 14.4	130.4 12.2	132.3 13.6	132.7 14.0	134.0 15.1
16	80.0 -6.8	84.7 -0.9	91.1 -5.2	98.3 10.4	99.0 1.4
ULT	80.0 -6.8	82.3 -3.9	85.3 -4.4	88.5 -0.7	90.6 -0.2
17	94.8 8.1	91.7 15.3	96.0 13.6	111.1 33.7	97.7 12.0
ULT	94.8 8.1	93.3 11.6	94.2 12.2	98.4 17.5	98.3 16.4
181-4	136.3 12.6	124.0 1.8	137.9 5.4	119.5 -7.5	114.3 -10.8
ULT	136.3 12.6	130.2 7.2	132.7 6.5	129.4 2.9	126.4 0.2

43.2  
-7.1

44.3  
-9.7

82.3  
-11.7

50.7  
-8.7

114.4  
8.8

132.3  
13.6

85.3  
-4.4

94.2  
12.2

132.7  
6.5

TAULU 1:  
TEOLLISUUSTUOTANNON VOLYYMI-INDEKSI V. 1997  
INDUSTRIPRODUKTIONS VOLYMINDEKX ÅR 1997

NELJÄNNEKSET  
KVARTAL

I

TOL NI	TAMMI JAN	HELMI FEBR	MAALIS MARS	HUHTI APRIL	TOUKO MAJ
185-9	98.8 -1.7	96.6 -0.3	97.7 -4.7	110.8 13.5	105.0 -1.4
ULT	98.8 -1.7	97.7 -1.0	97.7 -2.3	101.0 1.6	101.8 1.0
18	120.4 7.2	112.4 1.0	120.8 1.7	115.8 0.1	110.3 -7.2
ULT	120.4 7.2	116.4 4.1	117.9 3.3	117.3 2.4	115.9 0.5
191	133.5 8.2	124.0 2.6	131.4 -4.2	118.1 16.1	133.9 11.2
ULT	133.5 8.2	128.7 5.4	129.6 2.0	126.7 4.9	128.2 6.2
192	95.5 29.4	81.9 16.1	98.6 26.0	114.5 39.3	141.6 24.0
ULT	95.5 29.4	88.7 22.9	92.0 24.0	97.7 28.1	106.4 27.0
19	133.5 9.8	122.6 3.5	132.1 -1.4	122.7 17.9	141.1 12.3
ULT	133.5 9.8	128.1 6.7	129.4 3.8	127.7 6.9	130.4 8.0
211	139.0 -12.3	120.4 -12.6	139.6 -13.7	143.6 1.8	146.7 -0.8
ULT	139.0 -12.3	129.7 -12.5	133.0 -12.9	135.7 -9.5	137.9 -7.7
212	109.6 5.8	103.8 1.6	108.3 0.7	121.3 15.9	119.3 5.9
ULT	109.6 5.8	106.7 3.7	107.2 2.7	110.7 6.0	112.4 6.0
21	113.8 2.1	106.3 -1.0	112.8 -2.3	124.5 13.3	123.2 4.7
ULT	113.8 2.1	110.0 0.5	111.0 -0.4	114.4 3.0	116.1 3.3
221	110.3 -17.9	112.6 9.6	139.2 14.8	165.4 34.5	139.0 3.0
ULT	110.3 -17.9	111.4 -6.0	120.7 1.0	131.9 9.6	133.3 8.1

97.7  
-2.3

117.9  
3.3

129.6  
2.0

92.0  
24.0

129.4  
3.8

133.0  
-12.9

107.2  
2.7

111.0  
-0.4

120.7  
1.0

TAULU 1:  
TEOLLISUUSTUANTONN VOLYYMI-INDEKSI V. 1997  
INDUSTRIPRODUKTIONS VOLYMINDEKSI ÅR 1997

(ENNAKKOTIETOJA)  
(FÖRHANDSUPPGIFTER)

TOL NI	TAMMI JAN	HELMI FEBR	MAALIS MARS	HUHTI APRIL	TOUKO MAJ	I
222	84.0 17.4	70.6 23.6	80.3 18.9	89.9 53.5	85.0 45.4	
ULT	84.0 17.4	77.3 20.2	78.3 19.7	81.2 27.5	82.0 30.8	78.3 19.7
223-9	68.8 10.0	62.6 10.5	68.1 10.0	85.1 29.1	99.9 19.6	
ULT	68.8 10.0	65.7 10.2	66.5 10.1	71.1 15.2	76.9 16.3	66.5 10.1
22	74.7 4.2	69.1 11.1	77.3 11.5	95.0 31.4	103.7 17.6	
ULT	74.7 4.2	71.9 7.4	73.7 8.8	79.0 14.7	84.0 15.4	73.7 8.8
231	172.9 9.1	159.1 12.3	167.0 9.9	170.8 11.0	165.6 9.2	
ULT	172.9 9.1	166.0 10.6	166.3 10.4	167.4 10.5	167.1 10.3	166.3 10.4
232	139.6 7.1	128.1 -0.1	144.1 -0.6	159.4 20.9	153.0 4.5	
ULT	139.6 7.1	133.8 3.5	137.2 2.1	142.8 6.7	144.8 6.2	137.2 2.1
233	124.1 -14.1	109.1 -13.1	124.2 -0.2	150.1 23.8	138.4 6.5	
ULT	124.1 -14.1	116.6 -13.6	119.1 -9.4	126.9 -1.6	129.2 0.0	119.1 -9.4
23	158.0 5.8	144.6 6.3	155.6 6.1	165.2 14.7	158.9 7.7	
ULT	158.0 5.8	151.3 6.0	152.7 6.0	155.9 8.2	156.5 8.1	152.7 6.0
24	108.2 3.5	103.7 3.2	109.2 -2.0	118.5 19.6	123.1 6.1	
ULT	108.2 3.5	105.9 3.3	107.0 1.4	109.9 5.8	112.5 5.8	107.0 1.4
251	102.9 -5.3	100.8 -4.6	112.0 4.4	132.5 23.3	120.3 -5.8	
ULT	102.9 -5.3	101.9 -4.9	105.2 -1.8	112.1 4.5	113.7 2.1	105.2 -1.8

TAULU 1:  
TEOLLISUUSTUOTANNON VOLYYMI-INDEKSI V. 1997  
INDUSTRIPRODUKTIONS VOLYINDEX ÅR 1997  
(ENNAKKOTIETOJA)  
(FÖRHANDSUPPGIFTER)

NELJÄNNEKSET  
KVARTAL

I

TOL NI	TAMMI JAN	HELMI FEBR	MAALIS MARS	HUHTI APRIL	TOUKO MAJ
252	102.3 0.1	96.7 -8.0	97.5 1.4	128.8 22.1	144.0 13.7
ULT	102.3	99.5	98.8	106.3	113.8
%	0.1	-4.0	-2.3	4.0	6.3
25	99.6 -2.3	97.1 -7.1	104.1 3.4	130.9 17.6	130.7 1.7
ULT	99.6	98.3	100.3	107.9	112.5
%	-2.3	-4.7	-2.0	3.2	2.8
261-3	299.7 10.0	283.8 10.5	331.0 5.3	350.6 34.8	332.5 7.7
ULT	299.7	291.7	304.8	316.3	319.5
%	10.0	10.2	8.4	14.6	13.1
264	142.3 8.0	124.0 7.5	115.2 -12.5	146.1 -1.6	111.4 -17.2
ULT	142.3	133.1	127.2	131.9	127.8
%	8.0	7.7	0.7	0.1	-3.5
26	275.5 9.8	259.2 10.3	297.9 4.1	319.1 31.3	298.4 5.8
ULT	275.5	267.3	277.5	287.9	290.0
%	9.8	10.0	7.8	13.5	11.8
271-2	101.2 -29.1	115.7 -26.2	117.7 -22.7	138.8 -2.9	133.1 -17.6
ULT	101.2	108.4	111.5	118.4	121.3
%	-29.1	-27.6	-25.9	-20.4	-19.8
273,5,9	87.6 4.9	81.4 5.3	78.6 -11.2	83.1 0.9	84.6 -15.7
ULT	87.6	84.5	82.5	82.7	83.1
%	4.9	5.1	-0.7	-0.3	-3.9
274	75.7 -3.2	78.0 1.9	77.1 5.1	86.7 16.5	75.6 -14.1
ULT	75.7	76.8	76.9	79.4	78.6
%	-3.2	-0.7	1.2	4.9	0.7
27	89.0 -16.3	94.5 -14.3	94.5 -14.0	107.7 2.7	101.7 -16.4
ULT	89.0	91.8	92.7	96.4	97.5
%	-16.3	-15.3	-14.9	-10.6	-11.9
98.8 -2.3					
100.3 -2.0					
304.8 8.4					
127.2 0.7					
277.5 7.8					
111.5 -25.9					
82.5 -0.7					
76.9 1.2					
92.7 -14.9					

TAULU 1:  
TEOLLISUUSTUOTANNON VOLYYMI-INDEKSI V. 1997  
INDUSTRIPRODUKTIONS VOLYMINDEKX ÅR 1997

(ENNAKKOTIETOJA)  
(FÖRHANDSUPPGIFTER)

NELJÄNNEKSET  
KVARTAL

I

TOUKO  
MAJ

HUHTI  
APRIL

MAALIS  
MARS

HELMI  
FEBR

TAMMI  
JAN

TOL  
NI

108.0

111.4

101.0

99.0

98.6

29

-14.5

9.2

-4.2

2.7

5.0

%

103.6

102.5

99.5

98.8

98.6

ULT

-1.2

3.1

1.0

3.8

5.0

%

135.0

137.8

125.9

116.4

123.9

D

4.1

16.8

2.5

3.6

5.0

%

127.8

126.0

122.1

120.2

123.9

ULT

6.4

7.0

3.7

4.4

5.0

%

110.5

127.5

139.9

138.2

162.1

31

-4.7

4.7

3.1

-3.2

11.3

%

135.7

141.9

146.7

150.2

162.1

ULT

2.5

4.0

3.8

4.1

11.3

%

104.6

103.4

104.3

95.3

104.3

34

-0.9

0.4

-3.3

-4.3

-1.8

%

102.4

101.8

101.3

99.8

104.3

ULT

-2.0

-2.2

-3.1

-3.0

-1.8

%

110.1

125.9

137.4

135.2

158.1

E

-4.5

4.5

2.8

-3.2

10.6

%

133.3

139.2

143.6

146.7

158.1

ULT

2.2

3.7

3.4

3.8

10.6

%

132.0

135.9

126.3

117.5

126.2

C,D,E

3.3

15.6

2.6

2.9

5.5

%

127.6

126.5

123.4

121.9

126.2

ULT

5.9

6.6

3.7

4.3

5.5

%

133.8

135.5

129.7

118.0

132.5

14,15

16.4

18.3

12.2

10.3

13.9

%

129.9

128.9

126.8

125.3

132.5

ULT

14.3

13.7

12.2

12.2

13.9

%

172.4

178.7

159.8

145.3

151.9

23-27

2.9

21.9

1.9

2.2

3.3

%

161.6

158.9

152.3

148.6

151.9

ULT

6.3

7.3

2.5

2.8

3.3

%

107.2

107.7

98.8

94.0

99.2

MUU D

0.2

10.4

-1.3

2.2

2.7

%

101.4

99.9

97.4

96.6

99.2

ULT

2.8

3.5

1.1

2.5

2.7

%

97.4

97.4

97.4

96.6

99.2

ULT

1.1

3.5

1.1

2.5

2.7

%

TAULU 1:  
TEOLLISUUSTUOTANNON VOLYYMI-INDEKSI V. 1997  
INDUSTRIPRODUKTIONS VOLYMINDEX ÅR 1997

(ENNAKKOTIETOJA)  
(FÖRHANDSUPPGIFTER)

NELJÄNNEKSET  
KVARTAL

I

TOL NI	TAMMI JAN	HELMI FEBR	MAALIS MARS	HUHTI APRIL	TOUKO MAJ
I	193.8 16.4	183.7 14.0	202.6 15.7	230.6 37.1	224.9 16.1
ULT	193.8	188.7	193.4	202.7	207.1
%	16.4	15.2	15.4	20.8	19.8
CO	98.3	92.6	96.7	105.4	102.6
%	-0.1	-2.4	-4.8	8.2	-3.3
ULT	98.3	95.5	95.9	98.2	99.1
%	-0.1	-1.2	-2.4	0.2	-0.5
R	121.7	112.1	121.1	127.4	123.5
%	5.0	2.1	2.2	12.9	2.4
ULT	121.7	116.9	118.3	120.6	121.2
%	5.0	3.6	3.1	5.5	4.9

193.4  
15.4

95.9  
-2.4

118.3  
3.1

TAULU 2:  
TEOLLISUUSTUOTANNON VOLYYMI-INDEKSI TYÖPÄIVÄÄ KOHTI V. 1997  
INDUSTRIPRODUKTIONS VOLYMINDEKX PER ARBETSDAG ÅR 1997

NEIJÄNNEKSET  
KVARTAL

(ENNAKKOTIETOJA)  
(FÖRHANDSUPPGIFTER)

I

TOL NI	TAMMI JAN	HELMI FEBR	MAALIS MARS	HUHTI APRIL	TOUKO MAJ
07	78.1 -1.9	87.8 11.7	87.9 5.2	97.5 -1.8	95.8 1.8
ULT	78.1 -1.9	82.9 4.8	84.6 5.0	87.8 3.0	89.4 2.7
09	61.4 -9.0	64.8 16.7	72.9 28.0	69.6 4.9	78.1 -2.8
ULT	61.4 -9.0	63.1 2.6	66.4 10.6	67.2 9.1	69.4 6.2
C	66.3 -6.7	71.5 14.8	77.3 19.4	77.8 2.4	83.2 -1.3
ULT	66.3 -6.7	68.9 3.4	71.7 8.6	73.2 6.9	75.2 5.0
111-5	109.4 9.5	110.4 9.4	115.2 5.4	115.6 -4.1	117.7 -0.5
ULT	109.4 9.5	109.9 9.4	111.7 8.0	112.7 4.6	113.7 3.5
116	107.4 1.3	91.2 -2.0	91.0 -3.0	105.2 -4.5	108.6 -2.9
ULT	107.4 1.3	99.3 -0.3	96.5 -1.1	98.7 -2.1	100.7 -2.2
117	66.4 11.8	56.6 45.2	84.4 17.6	100.7 18.8	111.1 10.6
ULT	66.4 11.8	61.5 25.0	69.1 21.9	77.0 20.9	83.9 18.0
119	108.1 0.0	99.3 3.0	116.7 12.3	109.5 -4.9	116.0 -7.3
ULT	108.1 0.0	103.7 1.4	108.1 5.1	108.4 2.4	109.9 0.2
11	106.2 7.1	103.1 7.6	108.3 4.4	111.8 -3.7	114.6 -1.0
ULT	106.2 7.1	104.6 7.3	105.9 6.3	107.3 3.5	108.8 2.5
12	94.5 1.1	93.7 3.1	94.6 5.8	105.1 14.6	99.3 0.8
ULT	94.5 1.1	94.1 2.1	94.3 3.3	97.0 6.1	97.4 5.0

84.6  
5.0

66.4  
10.6

71.7  
8.6

111.7  
8.0

96.5  
-1.1

69.1  
21.9

108.1  
5.1

105.9  
6.3

94.3  
3.3

TAULU 2:  
TEOLLISUUSTUOTANNON VOLYMI-INDEKSI TYÖPÄIVÄÄ KOHTI V. 1997  
INDUSTRIPRODUKTIONS VOLYMINDEKX PER ARBEITSDAG ÅR 1997

(ENNAKKOTIETOJA)  
(FÖRHANDSUPPGIFTER)

TOL NI	TAMMI JAN	HELMI FEBR	MAALIS MARS	HUHTI APRIL	TOUKO MAJ	NELJÄNNEKSET KVARTAL
131	50.6 4.3	47.0 -7.0	37.3 -2.2	38.0 -2.9	59.8 1.6	
ULT	50.6 4.3	48.8 -1.5	45.0 -1.7	43.2 -1.9	46.5 -1.1	45.0 -1.7
132	50.2 -1.7	38.0 -8.6	50.3 -2.7	51.3 -3.5	54.2 11.1	
ULT	50.2 -1.7	44.1 -4.8	46.2 -4.1	47.5 -3.9	48.8 -0.9	46.2 -4.1
133	98.7 0.6	78.5 -9.5	79.4 -11.2	79.2 5.8	82.3 -8.2	
ULT	98.7 0.6	88.6 -4.2	85.5 -6.5	84.0 -3.8	83.6 -4.7	85.5 -6.5
13	59.7 2.7	52.3 -7.8	46.2 -5.4	46.8 -0.3	63.7 -0.5	
ULT	59.7 2.7	56.0 -2.5	52.8 -3.3	51.3 -2.7	53.7 -2.2	52.8 -3.3
14	124.8 16.8	106.5 16.3	125.2 12.9	135.3 13.1	126.8 14.4	
ULT	124.8 16.8	115.7 16.5	118.8 15.3	123.0 14.6	123.7 14.6	118.8 15.3
15	130.9 14.6	133.3 13.8	133.1 17.0	135.3 13.9	139.1 19.5	
ULT	130.9 14.6	132.1 14.2	132.4 15.1	133.1 14.8	134.3 15.7	132.4 15.1
16	78.8 -5.6	89.0 2.7	94.4 1.3	95.9 2.6	99.6 2.6	
ULT	78.8 -5.6	83.9 -1.4	87.4 -0.4	89.5 0.3	91.6 0.8	87.4 -0.4
17	94.3 12.8	95.7 20.6	105.5 25.0	106.6 20.9	102.0 17.1	
ULT	94.3 12.8	95.0 16.6	98.5 19.5	100.5 19.8	100.8 19.3	98.5 19.5
181-4	133.5 12.4	134.2 5.1	135.6 5.5	120.6 -8.2	112.6 -10.8	
ULT	133.5 12.4	133.9 8.6	134.5 7.6	131.0 3.5	127.3 0.6	134.5 7.6

TAULU 2:  
TEOLLISUUSTUOTANNON VOLYYMI-INDEKSI TYÖPÄIVÄÄ KOHTI V. 1997  
INDUSTRIPRODUKTIONS VOLYMINDEX PER ARBETSDAG ÅR 1997

(ENNAKKOTIETOJA)  
(FÖRHANDSUPPGIFTER)

TOL NI	TAMMI JAN	HELMI FEBR	MAALIS MARS	HUHTI APRIL	TOUKO MAJ	NELJÄNNEKSET KVARTAL
185-9	98.1 2.3	101.3 4.2	106.3 3.9	107.1 3.3	109.0 2.7	
ULT	98.1 2.3	99.7 3.3	101.9 3.5	103.2 3.5	104.4 3.3	101.9 3.5
18	118.5 8.6	120.2 4.8	123.2 4.9	114.9 -3.9	111.1 -5.6	
ULT	118.5 8.6	119.3 6.7	120.6 6.1	119.2 3.5	117.6 1.6	120.6 6.1
191	131.0 7.8	134.7 6.0	128.9 -4.5	119.8 15.8	131.4 10.9	
ULT	131.0 7.8	132.8 6.9	131.5 2.9	128.6 5.6	129.2 6.7	131.5 2.9
192	94.8 35.1	85.4 21.5	108.3 38.7	110.5 25.6	147.6 29.7	
ULT	94.8 35.1	90.1 28.3	96.1 32.0	99.7 30.2	109.3 30.1	96.1 32.0
19	131.1 10.1	132.6 6.8	131.4 -0.4	123.4 16.0	139.9 13.0	
ULT	131.1 10.1	131.9 8.4	131.7 5.3	129.7 7.7	131.7 8.8	131.7 5.3
211	138.2 -8.5	125.7 -8.6	153.4 -5.0	137.5 -7.9	153.1 3.7	
ULT	138.2 -8.5	132.0 -8.6	139.1 -7.3	138.7 -7.4	141.6 -5.2	139.1 -7.3
212	107.7 8.2	109.2 5.7	113.7 7.8	118.8 7.6	121.5 8.5	
ULT	107.7 8.2	108.4 6.9	110.2 7.2	112.4 7.3	114.2 7.6	110.2 7.2
21	112.1 4.8	111.6 3.0	119.5 5.1	121.5 4.7	126.1 7.7	
ULT	112.1 4.8	111.9 3.9	114.4 4.3	116.2 4.4	118.2 5.1	114.4 4.3
221	108.0 -17.0	119.6 13.7	140.6 18.3	165.0 29.5	139.3 4.2	
ULT	108.0 -17.0	113.8 -3.3	122.8 4.0	133.3 10.7	134.5 9.3	122.8 4.0

TAULU 2:  
TEOLLISUUSTUOTANNON VOLYYMI-INDEKSI TYÖPÄIVÄÄ KOHTI V. 1997  
INDUSTRIPRODUKTIONS VOLYMINDEKSI PER ARBETSDAG ÅR 1997

(CENNAKKOTIETOJA)  
(FÖRHANDSUPPGIFTER)

NELJÄNNEKSET  
KVARTAL

1

TOL NI	TAMMI JAN	HELMI FEBR	MAALIS MARS	HUHTI APRIL	TOUKO MAJ
222	83.4 21.4	74.4 29.0	86.3 28.1	86.6 41.7	87.7 50.6
ULT	83.4 21.4	78.9 24.9	81.4 26.0	82.7 29.8	83.7 33.6
223-9	67.8 12.6	66.1 14.8	71.7 17.6	83.9 19.4	101.9 23.0
ULT	67.8 12.6	66.9 13.7	68.5 15.0	72.4 16.3	78.3 18.0
22	73.6 6.5	73.0 15.4	80.9 18.4	93.8 22.5	105.5 20.7
ULT	73.6 6.5	73.3 10.7	75.8 13.3	80.3 15.9	85.4 17.0
231	169.5 9.0	171.9 16.1	165.0 10.7	172.6 9.6	162.9 9.1
ULT	169.5 9.0	170.7 12.5	168.8 11.9	169.7 11.3	168.4 10.9
232	137.3 8.4	137.2 3.6	146.4 2.4	158.3 16.6	152.8 5.7
ULT	137.3 8.4	137.3 5.9	140.3 4.7	144.8 7.7	146.4 7.3
233	122.9 -10.3	113.4 -9.1	135.9 9.8	146.6 11.6	144.0 11.4
ULT	122.9 -10.3	118.2 -9.8	124.1 -3.5	129.7 0.4	132.6 2.6
23	155.2 6.5	155.4 10.2	156.5 8.5	165.5 11.5	157.9 8.5
ULT	155.2 6.5	155.3 8.3	155.7 8.4	158.2 9.2	158.1 9.0
24	107.4 7.5	108.0 7.8	119.3 8.0	114.7 7.8	128.2 10.4
ULT	107.4 7.5	107.7 7.6	111.6 7.8	112.4 7.8	115.5 8.3
251	102.3 -1.2	105.3 -0.2	123.1 15.0	126.6 11.5	125.7 -1.5
ULT	102.3 -1.2	103.8 -0.7	110.2 4.6	114.3 6.4	116.6 4.6

81.4  
26.0

68.5  
15.0

75.8  
13.3

168.8  
11.9

140.3  
4.7

124.1  
-3.5

155.7  
8.4

111.6  
7.8

110.2  
4.6

TAULU 2:  
TEOLLISUUSTUOTANNON VOLYYMI-INDEKSI TYÖPÄIVÄÄ KOHTI V. 1997  
INDUSTRIPRODUKTIONS VOLYMINDEKSI PER ARBETSDAG ÅR 1997

(ENNAKKOTIETOJA)  
(FÖRHANDSUPPGIFTER)

NELJÄNNEKSET  
KVARTAL

I

TOL NI	TAMMI JAN	HELMI FEBR	MAALIS MARS	HUHTI APRIL	TOUKO MAJ
252	101.7 4.5	101.0 -3.8	107.2 11.6	123.3 10.4	150.4 19.0
ULT %	101.7 4.5	101.4 0.2	103.3 3.8	108.3 5.6	116.7 8.8
25	99.1 2.0	101.4 -2.8	114.5 13.9	125.2 6.4	136.5 6.4
ULT %	99.1 2.0	100.3 -0.5	105.0 4.3	110.0 4.9	115.3 5.2
261-3	298.1 14.7	296.4 15.5	363.9 15.9	334.8 22.1	347.2 12.5
ULT %	298.1 14.7	297.2 15.1	319.4 15.4	323.3 17.1	328.1 16.1
264	141.7 12.6	129.6 12.4	126.9 -3.6	138.9 -10.9	116.5 -13.5
ULT %	141.7 12.6	135.7 12.5	132.7 6.8	134.3 1.6	130.7 -1.5
26	274.0 14.5	270.7 15.3	327.5 14.5	304.7 19.0	311.7 10.6
ULT %	274.0 14.5	272.4 14.9	290.7 14.8	294.2 15.8	297.7 14.7
271-2	100.3 -26.0	120.5 -22.9	129.1 -14.9	134.7 -12.3	138.6 -13.8
ULT %	100.3 -26.0	110.4 -24.3	116.6 -21.1	121.1 -18.8	124.6 -17.8
273,5,9	87.2 9.5	85.0 10.1	86.4 -2.2	79.5 -8.5	88.4 -11.9
ULT %	87.2 9.5	86.1 9.8	86.2 5.5	84.5 1.8	85.3 -1.4
274	75.2 1.0	81.4 6.6	84.7 15.7	83.0 5.5	78.9 -10.1
ULT %	75.2 1.0	78.3 3.8	80.5 7.7	81.1 7.1	80.7 3.2
27	88.4 -12.6	98.6 -10.4	103.7 -5.3	103.9 -7.2	106.1 -12.5
ULT %	88.4 -12.6	93.5 -11.5	96.9 -9.4	98.6 -8.8	100.1 -9.6

103.3  
3.8

105.0  
4.3

319.4  
15.4

132.7  
6.8

290.7  
14.8

116.6  
-21.1

86.2  
5.5

80.5  
7.7

96.9  
-9.4

TAULU 2:  
TEOLLISUUSTUOTANNON VOLYYMI-INDEKSI TYÖPÄIVÄÄ KOHTI V. 1997  
INDUSTRIPRODUKTIONS VOLYMINDEKX PER ARBETSDAG ÅR 1997

(ENNAKKOTIETOJA)  
(FÖRHANDSUPPGIFTER)

TOL NI	TAMMI JAN	HELMI FEBR	MAALIS MARS	HUHTI APRIL	TOUKO MAJ	NELJÄNNEKSET KVARTAL
29	98.0 9.6	103.4 7.4	111.0 5.5	106.5 -1.1	112.8 -10.6	
ULT	98.0 9.6	100.7 8.4	104.1 7.4	104.7 5.1	106.3 1.3	104.1 7.4
D	122.3 7.9	122.6 8.0	133.3 9.7	134.2 8.4	138.4 7.2	
ULT	122.3 7.9	122.4 7.9	126.0 8.6	128.1 8.5	130.1 8.2	126.0 8.6
31	158.2 11.0	149.3 0.0	136.4 2.8	128.6 4.4	110.3 -5.0	
ULT	158.2 11.0	153.7 5.4	148.0 4.6	143.1 4.5	136.5 2.9	148.0 4.6
34	102.3 -2.1	103.5 -1.1	102.3 -3.6	104.8 0.1	102.7 -1.2	
ULT	102.3 -2.1	102.9 -1.6	102.7 -2.3	103.3 -1.7	103.1 -1.6	102.7 -2.3
E	154.3 10.3	146.1 -0.0	134.1 2.5	126.9 4.2	109.8 -4.7	
ULT	154.3 10.3	150.2 5.0	144.8 4.2	140.3 4.2	134.2 2.6	144.8 4.2
C,D,E	124.4 8.0	124.0 7.1	132.6 9.1	132.8 8.0	135.1 6.1	
ULT	124.4 8.0	124.2 7.6	127.0 8.1	128.5 8.1	129.8 7.7	127.0 8.1
14,15	129.0 15.3	125.0 14.4	130.6 15.8	135.3 13.6	135.3 17.9	
ULT	129.0 15.3	127.0 14.8	128.2 15.2	130.0 14.7	131.0 15.4	128.2 15.2
23-27	150.8 7.2	152.2 6.8	173.7 11.2	172.0 11.2	179.0 7.1	
ULT	150.8 7.2	151.5 7.0	158.9 8.5	162.2 9.2	165.5 8.7	158.9 8.5
MUU D	98.0 5.1	99.2 6.3	103.8 5.2	105.2 2.8	109.1 2.7	
ULT	98.0 5.1	98.6 5.7	100.3 5.5	101.6 4.8	103.1 4.3	100.3 5.5

TAULU 2:  
TEOLLISUUSTUOTANNON VOLYYMI-INDEKSI TYÖPÄIVÄÄ KOHTI V. 1997  
INDUSTRIPRODUKTIONS VOLYMINDEKX PER ARBETSDAG ÅR 1997

(ENNAKKOTIETOJA)  
(FÖRHANDSUPPGIFTER)

NELJÄNNEKSET  
KVARTAL

I

TOL NI	TAMMI JAN	HELMI FEBR	MAALIS MARS	HUHTI APRIL	TOUKO MAJ
I	192.8 21.4	191.8 19.2	222.6 27.3	220.6 24.1	234.9 21.4
ULT	192.8 21.4	192.3 20.3	202.4 22.8	206.9 23.1	212.5 22.7
CO	% 2.4	97.0 1.7	102.1 1.9	102.6 0.3	104.9 -0.8
ULT	% 2.4	97.0 2.0	98.9 2.0	99.8 1.5	100.8 1.0
R	119.6 6.9	118.8 6.1	125.1 7.1	125.5 6.8	125.6 4.6
ULT	119.6 6.9	119.2 6.5	121.2 6.7	122.3 6.8	122.9 6.3

202.4  
22.8

98.9  
2.0

121.2  
6.7

---

SVT Suomen virallinen tilasto  
Finlands officiella statistik  
Official Statistics of Finland

Teollisuus 1997:11  
Industri  
Industry

Tiedustelut – Förfrågningar – Inquiries:

Kari Rautio  
Liisa Pulli  
(09) 17 341