

A close-up photograph of several purple tulip buds on their stems, set against a blurred background of more buds and green leaves. The lighting is soft, highlighting the texture of the petals.

Finland in Figures  
2012

# Contents and Sources

---

<b>Environment and Natural Resources</b> . . . . .	2
Sources: Statistics Finland ( <a href="http://www.stat.fi">www.stat.fi</a> ), National Land Survey of Finland ( <a href="http://www.maanmittauslaitos.fi">www.maanmittauslaitos.fi</a> ), Finnish Environment Institute ( <a href="http://www.ymparisto.fi">www.ymparisto.fi</a> ), Finnish Meteorological Institute ( <a href="http://www.fmi.fi">www.fmi.fi</a> ), Ministry of the Environment ( <a href="http://www.ymparisto.fi">www.ymparisto.fi</a> ), Metsähallitus ( <a href="http://www.metsa.fi">www.metsa.fi</a> )	
<b>Population</b> . . . . .	3
Sources: Statistics Finland ( <a href="http://www.stat.fi">www.stat.fi</a> ), National Land Survey of Finland ( <a href="http://www.maanmittauslaitos.fi">www.maanmittauslaitos.fi</a> ), Finnish Immigration Service ( <a href="http://www.migri.fi">www.migri.fi</a> ), Ministry of the Interior ( <a href="http://www.intermin.fi">www.intermin.fi</a> ), Ministry of Employment and the Economy ( <a href="http://www.tem.fi">www.tem.fi</a> )	
<b>Enterprises</b> . . . . .	8
Source: Statistics Finland ( <a href="http://www.stat.fi">www.stat.fi</a> )	
<b>Agriculture, Forestry and Fishery</b> . . . . .	9
Sources: Information Centre of the Ministry of Agriculture and Forestry, Tike ( <a href="http://www.mmmtike.fi">www.mmmtike.fi</a> ), TNS Gallup Food and Farm Facts Ltd ( <a href="http://www.tns-gallup.fi">www.tns-gallup.fi</a> ), Finnish Forest Research Institute ( <a href="http://www.metla.fi">www.metla.fi</a> )	
<b>Manufacturing</b> . . . . .	11
Source: Statistics Finland ( <a href="http://www.stat.fi">www.stat.fi</a> )	
<b>Construction</b> . . . . .	12
Source: Statistics Finland ( <a href="http://www.stat.fi">www.stat.fi</a> )	
<b>Energy</b> . . . . .	12
Source: Statistics Finland ( <a href="http://www.stat.fi">www.stat.fi</a> )	
<b>Trade</b> . . . . .	13
Sources: Statistics Finland ( <a href="http://www.stat.fi">www.stat.fi</a> ), National Board of Customs ( <a href="http://www.tulli.fi">www.tulli.fi</a> )	
<b>Housing</b> . . . . .	14
Source: Statistics Finland ( <a href="http://www.stat.fi">www.stat.fi</a> )	
<b>Transport and Tourism</b> . . . . .	16
Sources: Statistics Finland ( <a href="http://www.stat.fi">www.stat.fi</a> ), Helsinki Region Transport ( <a href="http://www.hsl.fi">www.hsl.fi</a> ), VR Group Ltd ( <a href="http://www.vrgroup.fi">www.vrgroup.fi</a> ), Finnish Transport Agency ( <a href="http://www.liikennevirasto.fi">www.liikennevirasto.fi</a> ), Finavia Corporation ( <a href="http://www.finavia.fi">www.finavia.fi</a> ), Finnish Transport Safety Agency Trafi ( <a href="http://www.trafi.fi">www.trafi.fi</a> )	
<b>Financing and Insurance</b> . . . . .	18
Sources: Statistics Finland ( <a href="http://www.stat.fi">www.stat.fi</a> ), NASDAQ OMX Helsinki Ltd. ( <a href="http://www.nasdaqomxnordic.com">www.nasdaqomxnordic.com</a> ), Bank of Finland ( <a href="http://www.bof.fi">www.bof.fi</a> )	
<b>National Accounts</b> . . . . .	21
Source: Statistics Finland ( <a href="http://www.stat.fi">www.stat.fi</a> )	
<b>Government Finance</b> . . . . .	23
Sources: Statistics Finland ( <a href="http://www.stat.fi">www.stat.fi</a> ), State Treasury ( <a href="http://www.treasuryfinland.fi">www.treasuryfinland.fi</a> ), Ministry of Finance ( <a href="http://www.vm.fi">www.vm.fi</a> ), OECD ( <a href="http://www.oecd.org">www.oecd.org</a> ), Ministry of Foreign Affairs ( <a href="http://www.formin.fi">www.formin.fi</a> )	
<b>Labour Market</b> . . . . .	25
Source: Statistics Finland ( <a href="http://www.stat.fi">www.stat.fi</a> )	

# Contents and Sources

---

<b>Wages, Salaries and Labour Costs</b> . . . . .	26
Source: Statistics Finland ( <a href="http://www.stat.fi">www.stat.fi</a> )	
<b>Income and Consumption</b> . . . . .	28
Sources: Statistics Finland ( <a href="http://www.stat.fi">www.stat.fi</a> ), Information Centre of the Ministry of Agriculture and Forestry, Tike ( <a href="http://www.mmmtike.fi">www.mmmtike.fi</a> ), The National Institute for Health and Welfare ( <a href="http://www.thl.fi">www.thl.fi</a> )	
<b>Prices and Costs</b> . . . . .	30
Source: Statistics Finland ( <a href="http://www.stat.fi">www.stat.fi</a> )	
<b>Social Protection</b> . . . . .	31
Sources: The National Institute for Health and Welfare ( <a href="http://www.thl.fi">www.thl.fi</a> ), Finnish Centre for Pensions ( <a href="http://www.etk.fi">www.etk.fi</a> )	
<b>Health</b> . . . . .	32
Sources: Statistics Finland ( <a href="http://www.stat.fi">www.stat.fi</a> ), The National Institute for Health and Welfare ( <a href="http://www.thl.fi">www.thl.fi</a> )	
<b>Education</b> . . . . .	33
Source: Statistics Finland ( <a href="http://www.stat.fi">www.stat.fi</a> )	
<b>Science, Technology and Information Society</b> . . . . .	34
Sources: Statistics Finland ( <a href="http://www.stat.fi">www.stat.fi</a> ), Finnish Communications Regulatory Authority ( <a href="http://www.ficora.fi">www.ficora.fi</a> )	
<b>Culture and the Media</b> . . . . .	35
Sources: Statistics Finland ( <a href="http://www.stat.fi">www.stat.fi</a> ), Ministry of Education and Culture ( <a href="http://www.minedu.fi">www.minedu.fi</a> ), The National Library of Finland ( <a href="http://www.nationallibrary.fi">www.nationallibrary.fi</a> ), Finnish Audit Bureau of Circulations ( <a href="http://www.levikintarkastus.fi">www.levikintarkastus.fi</a> ), Finnish Film Foundation ( <a href="http://www.ses.fi">www.ses.fi</a> )	
<b>Justice</b> . . . . .	36
Source: Statistics Finland ( <a href="http://www.stat.fi">www.stat.fi</a> )	
<b>Elections</b> . . . . .	37
Source: Statistics Finland ( <a href="http://www.stat.fi">www.stat.fi</a> )	
<b>Foreign Countries</b> . . . . .	38
Sources: Eurostat; UN, Demographic Yearbook; UN, Population and Vital Statistics Report; UN, The State of World Population; CIA, The World Factbook; World Bank, World Development Indicators; ILO, Yearbook of Labour Statistics; OECD, Economic Outlook; IMF, World Economic Outlook	

## Symbols

---

- |                           |   |
|---------------------------|---|
| * preliminary data        | . . data not available or too uncertain for presentation, or subject to secrecy |
| . category not applicable |   |
| - magnitude nil           |   |

A horizontal or vertical line drawn across a time series indicates substantial breaks in the homogeneity of a series

# Environment and Natural Resources

## Geographical data

<b>Area, km<sup>2</sup>, 1.1.2012</b>		<b>Highest point, m</b>	
Area, total	390 903	Halti	1 324
Land area	303 893	<b>Longest river, km</b>	
Fresh water	34 539	Kemijoki	483
Sea water	52 471	<b>Largest lakes, km<sup>2</sup></b>	
<b>Boundaries, km</b>		Saimaa	1 377
Sweden	614	Inarijärvi	1 084
Norway	736	Päijänne	1 083
Russia	1 340	Pielinen	894
Limit of territorial waters	1 250	Oulujärvi	887
Total	3 940	<b>Largest islands, km<sup>2</sup></b>	
<b>Greatest length, km</b>		a) Sea	
Hanko–Utsjoki	1 157	Mainland Åland	685
<b>Greatest width, km</b>		Kemiönsaari	524
Närpiö–Ilomantsi	542	b) Inland waters	
		Soisalo	1 638

Lakes with an area of 500 m<sup>2</sup> or more total about 188 000, of which around 56 000 with an area of over one hectare. Islands with an area of 100 m<sup>2</sup> or more total about 179 000.

## Mean daily temperature (centigrade)

	Helsinki 1971–2000	2011	Sodankylä (Lapland) 1971–2000	2011
January	-4.2	-4.4	-14.1	-13.4
February	-4.9	-9.9	-12.7	-19.0
March	-1.5	-1.0	-7.5	-6.0
April	3.3	5.6	-2.0	2.6
May	9.9	9.9	4.9	6.5
June	14.8	16.7	11.6	14.5
July	17.2	20.6	14.3	16.5
August	15.8	17.5	11.2	12.5
September	10.9	13.6	5.8	8.7
October	6.2	8.5	-0.6	2.9
November	1.4	5.3	-7.7	-2.1
December	-2.2	3.4	-12.4	-3.7

°F = 9/5°C + 32

## Air emissions

	Unit	1990	2000	2008	2009	2010
Greenhouse gas emissions, CO <sub>2</sub> eq.	mil. tons	70.4	69.2	70.2	66.1	74.6
Carbon dioxide <sup>1)</sup>	mil. tons	53.2	53.1	53.5	51.5	59.2
Sulphur (as SO <sub>2</sub> )	1 000 t	249	81	69	59	67
Nitrogen oxides	1 000 t	295	211	169	154	167
Particles <sup>2)</sup>	1 000 t	87	45	41	39	43

1) Emissions from combustion of fossil fuels and peat

2) Emissions from energy production

## Environment and Natural Resources

### Protected and wilderness areas on 1 Jan. 2012

	Number	Area, ha	Water, %
<b>Protected areas</b>	<b>8 779</b>	<b>1 972 600</b>	<b>20.3</b>
National parks	37	980 700	18.0
Strict nature reserves	19	153 600	1.9
Mire reserves	171	461 800	2.5
Herb-rich forest reserves	51	1 200	1.1
Old-growth forest reserves	91	9 800	2.8
Seal reserves	7	18 800	100.0
Protected areas established by Metsähallitus	24	800	5.4
Other state-owned protected areas	38	47 900	15.8
Protected areas on private land	8 289	262 500	57.1
Protected areas on Åland	52	35 500	92.7
<b>Wilderness reserves</b>	<b>12</b>	<b>1 490 300</b>	<b>7.4</b>

In addition, the Act on the Protection of Rapids protects a total of 53 individual rapids, river portions or catchment areas against power station construction. Corresponding acts have been passed on the protection of the Ounasjoki and Kyrönjoki rivers.

## Population

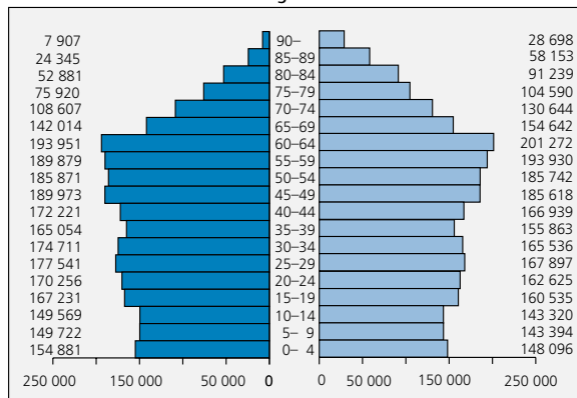
### Population by age group, end-2011

Total population 5 401 267

Men 2 652 534

Age

Women 2 748 733



In 2011 the mean age of men was 40.2 years and that of women 43.0 years. The age of 100 years or more had been reached by 664 persons, 87 of whom were men and 577 women.

# Population

## Population structure

	Unit	1900	1950	1990	2000	2011
Population		31. Dec.				
<b>Total</b>	<b>1 000</b>	<b>2 656</b>	<b>4 030</b>	<b>4 998</b>	<b>5 181</b>	<b>5 401</b>
Men	1 000	1 311	1 926	2 426	2 529	2 652
Women	1 000	1 345	2 104	2 572	2 652	2 749
<b>Age</b>						
0–14 years	%	35.0	30.0	19.3	18.1	16.5
15–64 years	%	59.6	63.3	67.2	66.9	65.4
65– years	%	5.4	6.7	13.5	15.0	18.1
<b>Language <sup>1)</sup></b>						
Finnish	%	86.75	91.10	93.53	92.42	90.04
Swedish	%	12.89	8.64	5.94	5.63	5.39
Lappish	%	0.06	0.06	0.03	0.03	0.03
Russian	%	0.29	0.12	0.08	0.54	1.08
Other	%	0.01	0.08	0.42	1.37	3.45
<b>Marital status</b>						
Single	%	60.9	53.3	45.5	47.1	47.5
Men	%	63.0	55.6	49.5	51.1	51.4
Women	%	58.9	50.8	41.7	43.2	43.7
Married <sup>2)</sup>	%	33.6	39.4	41.6	38.3	37.3
Men	%	34.0	41.2	42.8	39.2	38.0
Women	%	33.2	38.0	40.5	37.5	36.7
Divorced and widowed <sup>2)</sup>	%	5.5	7.2	12.9	14.6	15.2
Men	%	3.0	3.2	7.6	9.7	10.6
Women	%	7.9	11.2	17.8	19.3	19.6
<b>Religion</b>						
Lutheran National Church	%	<sup>3)</sup> 98.1	95.0	87.8	85.1	77.3
Greek Orthodox Church in Finland	%	<sup>4)</sup> 1.7	1.7	1.1	1.1	1.1
Other	%	0.2	0.5	0.9	1.1	1.5
Census register or unknown	%	-	2.8	10.2	12.7	20.1

1) Finnish and Swedish are the official languages

2) In 2011 including registered partnerships

3) Incl. other Lutheran churches

4) Incl. other Orthodox churches

## Population projection

	Unit	2020	2030	2040	2050	2060
Population	1 000	5 636	5 850	5 985	6 090	6 213
0–14 years	%	17	16	15	16	15
15–64 years	%	60	58	58	57	56
65– years	%	23	26	27	28	29

# Population

## Area, population and GDP by region

Region	Land area, km <sup>2</sup> 1.1.2012	Population 31.12.2011 <sup>1)</sup>	Change, % 2011 <sup>1)</sup>	GDP <sup>2)</sup> € mil. *2009	GDP per capita <sup>3)</sup> *2009
<i>Mainland Finland:</i>	<i>302 340</i>	<i>5 372 913</i>	<i>0.5</i>	<i>171 869</i>	<i>100</i>
Uusimaa	9 096	1 549 058	1.1	<sup>4)</sup> 66 584	<sup>4)</sup> 136
Varsinais-Suomi	10 661	467 217	0.4	13 871	93
Satakunta	7 957	226 567	-0.2	6 599	89
Kanta-Häme	5 200	175 230	0.4	4 592	82
Pirkanmaa	12 446	491 472	0.7	14 545	93
Päijät-Häme	5 125	202 236	0.2	5 283	81
Kymenlaakso	5 148	181 829	-0.3	4 913	83
South Karelia	5 613	133 311	-0.3	3 836	88
Etelä-Savo	13 977	153 738	-0.6	3 829	76
Pohjois-Savo	16 768	248 130	0.1	6 541	81
North Karelia	17 763	165 906	0.0	3 947	73
Central Finland	16 704	274 379	0.3	7 374	83
South Ostrobothnia	13 444	193 735	0.1	4 977	79
Ostrobothnia	7 750	179 106	0.7	5 815	102
Central Ostrobothnia	5 019	68 484	0.2	2 076	90
North Ostrobothnia	35 507	397 887	0.7	10 358	82
Kainuu	21 501	81 298	-0.9	1 828	68
Lapland	92 662	183 330	-0.1	4 901	82
Åland	1 552	28 354	1.2	1 321	148
<b>Whole country</b>	<b>303 893</b>	<b>5 401 267</b>	<b>0.5</b>	<b>173 267</b>	<b>100</b>

1) According to the regional division of 1 January 2012

2) Gross domestic product at market prices

3) Whole country = 100

4) Incl. Itä-Uusimaa

## Largest municipalities

	Population 31.12.2011 <sup>1)</sup>	Change, % 2011 <sup>1)</sup>		Population 31.12.2011 <sup>1)</sup>	Change, % 2011 <sup>1)</sup>
Helsinki	595 384	1.2	Pori	83 133	0.1
Espoo	252 439	1.8	Joensuu	73 758	0.6
Tampere	215 168	0.9	Lappeenranta	72 133	0.2
Vantaa	203 001	1.5	Hämeenlinna	67 270	0.7
Turku	178 630	0.7	Rovaniemi	60 637	0.9
Oulu	143 909	1.6	Vaasa	60 398	1.4
Jyväskylä	132 062	1.0	Seinäjoki	58 703	1.5
Lahti	102 308	0.7	Salo	55 283	0.1
Kuopio	97 433	0.7	Kotka	54 831	0.0
Kouvola	87 567	-0.6	Mikkeli	48 907	0.3

At the beginning of 2012, there were a total of 336 municipalities, 61 of which were urban, 65 semi-urban and 210 rural municipalities.

1) According to the regional division of 1 January 2012

## Population

### Families, 2010

	All families	With children aged 0–17	With children aged 0–6	Persons per family
Total of families	1 455 073	582 360	286 057	2.8
Change 2009/2010, %	0.3	-0.3	1.0	
Family type				
Married couple without children	513 889	.	.	2.0
Cohabiting couple without children	195 967	.	.	2.0
Married couple with children	446 433	356 943	178 360	4.0
Cohabiting couple with children	117 254	107 368	67 028	3.7
Mother with children	149 651	101 946	37 768	2.5
Father with children	30 278	15 836	2 713	2.3
Registered male couple <sup>1)</sup>	706	3	1	2.0
Registered female couple <sup>1)</sup>	895	264	187	2.5

1) Incl. registered partnerships with children

### Families and children by the number of children, 2010

	Number of children under 18				Total
	1	2	3	4–	
Children in families	254 551	445 192	230 580	134 147	1 064 470
%	23.9	41.8	21.7	12.6	100
Families	254 551	222 596	76 860	28 353	582 360
%	43.7	38.2	13.2	4.9	100

### Vital statistics

	2009	% <sup>1)</sup>	2010	% <sup>1)</sup>	2011	% <sup>1)</sup>
Live births	60 430	11.3	60 980	11.4	59 961	11.1
Deaths	49 883	9.3	50 887	9.5	50 585	9.4
Excess of births	10 547	2.0	10 093	1.9	9 376	1.7
Immigration	26 699	5.0	25 636	4.8	29 481	5.5
Emigration	12 151	2.3	11 905	2.2	12 660	2.3
Net immigration	14 548	2.7	13 731	2.6	16 821	3.1
Population growth	25 113	4.7	23 849	4.4	25 991	4.8
Marriages	29 836	5.6	29 952	5.6	28 408	5.3
Registered partnerships	246	0.0	322	0.1	333	0.1
Divorces	13 527	2.5	13 619	2.5	13 469	2.5
Divorces from registered partnerships	53	0.0	64	0.0	85	0.0
Life expectancy at birth						
Males	76.5		76.7		*77.2	
Females	83.1		83.2		*83.5	

1) Per 1 000 mean population

# Population

## Foreigners in Finland

Country of citizenship	2010	%	Annual change, %	2011	%	Annual change, %
Estonia	29 080	17.3	14.0	34 006	18.6	16.9
Russia	28 426	16.9	0.8	29 585	16.2	4.1
Sweden	8 510	5.1	0.0	8 481	4.6	-0.3
Somalia	6 593	3.9	18.4	7 421	4.1	12.6
China	5 559	3.3	7.3	6 159	3.4	10.8
Iraq	5 024	3.0	26.3	5 742	3.1	14.3
Thailand	5 021	3.0	11.7	5 545	3.0	10.4
Turkey	3 973	2.4	4.3	4 159	2.3	4.7
Germany	3 715	2.2	2.4	3 806	2.1	2.4
India	3 468	2.1	9.5	3 793	2.1	9.4
Others	68 585	40.8	7.8	74 436	40.6	8.5
<b>Total</b>	<b>167 954</b>	<b>100</b>	<b>7.9</b>	<b>183 133</b>	<b>100</b>	<b>9.0</b>

## Finnish citizenships granted <sup>1)</sup>

Country of previous citizenship	2008	2009	2010	*2011
Russia	2 211	1 026	1 925	1 646
Estonia	262	166	243	299
Turkey	195	94	132	164
Iran	329	180	137	143
Sweden	274	126	104	107
Iraq	379	207	78	106
Former Serbia and Montenegro	324	154	109	99
Afghanistan	279	186	108	98
Ukraine	62	53	92	95
Somalia	595	290	131	90
Others	1 772	931	1 275	1 528
<b>Total</b>	<b>6 682</b>	<b>3 413</b>	<b>4 334</b>	<b>4 375</b>

1) Persons permanently resident in Finland

## Asylum-seekers and refugees

	2008	2009	2010	2011
Asylum-seekers	4 035	5 988	4 018	3 088
Decisions on asylum <sup>1)</sup>				
Asylum granted	89	116	181	169
Residence permit granted	696	<sup>2)</sup> 1 257	<sup>2)</sup> 1 603	<sup>2)</sup> 1 102
No asylum or residence permit granted	1 011	2 568	3 428	1 890
Family reunification				
Positive decisions <sup>3)</sup>	467	444	423	495
Negative decisions <sup>3)</sup>	239	349	596	1 004
Quota	750	750	750	750
Received refugees <sup>4)</sup>	2 219	2 611	<sup>5)</sup> 3 207	<sup>5)</sup> 1 724
Immigrating as refugees, from 1973–	31 769	34 380	<sup>5)</sup> 37 587	<sup>5)</sup> 39 311

1) Decisions of the Finnish Immigration Service

2) Incl. residence permits granted on the basis of humanitarian and subsidiary protection

3) Between 2008 and 2010 one decision can concern more than one person, from 2011 onwards one person

4) Refugees by quota, asylum-seekers having received a positive decision, persons admitted under the family reunification scheme

5) Excl. refugees at reception centres awaiting placement in municipalities

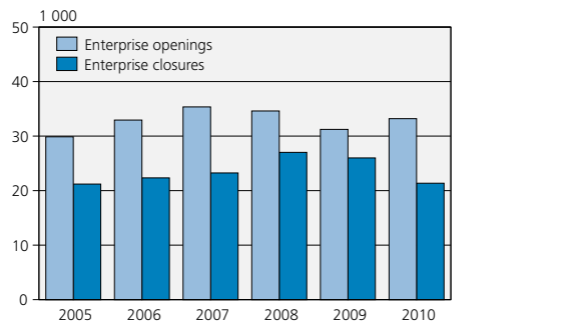
## Enterprises, 2010

Industry (TOL 2008)	Enterprises		Personnel		Turnover	
		%	1 000	%	€ million	%
Agriculture, forestry and fishing	56 403	17.7	67	4.7	1 484	0.4
Manufacturing	21 776	6.8	330	22.9	123 449	34.4
Construction	40 805	12.8	146	10.1	24 168	6.7
Wholesale and retail trade, repair of motor vehicles and motorcycles	45 430	14.2	251	17.4	115 726	32.2
Transportation and storage	22 576	7.1	129	8.9	20 644	5.8
Accommodation and food service activities	11 167	3.5	54	3.7	5 391	1.5
Information and communication	8 546	2.7	80	5.6	15 870	4.4
Financial and insurance activities	4 842	1.5	45	3.1	-	-
Real estate activities	14 796	4.6	18	1.3	5 441	1.5
Professional, scientific and technical activities	32 347	10.1	89	6.2	11 399	3.2
Administrative and support service activities	12 967	4.1	104	7.2	8 627	2.4
Human health and social work activities	17 790	5.6	54	3.8	4 262	1.2
Other industries	29 506	9.3	76	5.3	22 449	6.3
<b>All industries</b>	<b>318 951</b>	<b>100</b>	<b>1 444</b>	<b>100</b>	<b>358 909</b>	<b>100</b>

### Size of personnel

0– 9	301 155	94.4	409	28.3	62 565	17.4
10– 49	14 825	4.6	285	19.8	61 814	17.2
50–249	2 355	0.7	233	16.1	57 684	16.1
250–499	343	0.1	117	8.1	37 033	10.3
500–	273	0.1	400	27.7	139 812	39.0

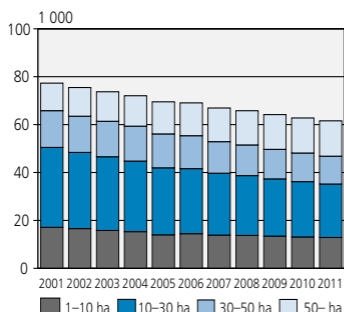
## Enterprise openings and closures



# Agriculture, Forestry and Fishery

## Farms

By size of arable land area, number



Land use, 2011

	1 000 ha
Arable land and garden	2 290
Rented fields	761
Arable land under cultivation	2 275
Meadow and pasture <sup>1)</sup>	19
Productive forest	3 076
Other land	790
<b>Total</b>	<b>6 175</b>
2010	6 206
2009	6 288
2008	6 335
2007	6 412
2006	6 502
2005	6 502
2004	6 551
2003	6 607
2002	6 690
2001	6 845

The average arable land area of farms was 37.4 hectares in 2011.

1) Only used meadows and pastures, and grazing land

## Livestock

	2006	2007	2008	2009	2010	2011
	1 000					
Cattle	949	927	915	918	926	914
Pigs	1 436	1 448	1 483	1 381	1 367	1 335
Poultry <sup>1)</sup>	3 947	3 898	4 056	3 785	4 232	4 050
Sheep	117	119	122	118	126	129
Horses	66	68	69	72	74	..
Reindeer	198	193	195	193	194	196

1) Egg-laying hens and chickens

## Self-sufficiency in foodstuffs

Production as % of consumption

Product group	2006	2007	2008	2009	2010	2011
Cereals	96	116	114	114	97	123
Dairy products, fluids	105	100	99	99	97	95
Dairy products, fats	128	125	121	121	118	109
Beef	90	90	85	86	83	83
Pork	115	115	116	112	109	103
Poultry meat	106	102	109	102	99	103
Eggs	116	116	117	106	117	116
Sugar	65	47	33	44	42	49

# Agriculture, Forestry and Fishery

## Agricultural production

	Unit	2007	2008	2009	2010	2011
<b>Crop yield</b>						
Wheat	mil. kg	797	788	887	724	975
Rye	mil. kg	87	61	42	69	78
Barley	mil. kg	1 984	2 129	2 171	1 340	1 514
Oats	mil. kg	1 222	1 213	1 115	810	1 043
Potatoes	mil. kg	702	684	755	659	673
Sugar beets	mil. kg	673	468	559	542	676
Wheat	kg/ha	3 930	3 640	4 100	3 430	3 850
Rye	kg/ha	2 740	2 580	2 550	2 720	2 910
Barley	kg/ha	3 720	3 640	3 860	3 210	3 510
Oats	kg/ha	3 520	3 420	3 460	2 910	3 390
Potatoes	kg/ha	25 730	26 120	28 610	26 210	27 580
Sugar beets	kg/ha	42 180	34 520	37 710	37 120	48 010

## Dairy products

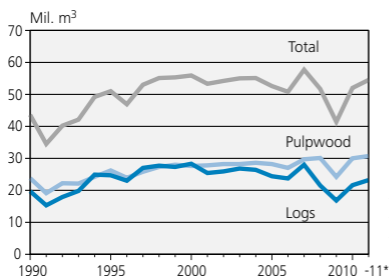
Milk	mil. l	2 226	2 188	2 215	2 222	2 190
Butter	mil. kg	48	47	48	46	42
Cheese	mil. kg	94	100	97	101	100
Beef	mil. kg	89	82	82	83	84
Pork	mil. kg	213	217	206	203	202
Poultry	mil. kg	95	101	95	96	101
Eggs	mil. kg	57	58	54	62	63

## Forest statistics

Forestry land (incl. protected areas) in 2004–2008 totalled 26 263 000 ha, of which 52.1% was owned privately, 7.7% by companies, 35.1% by the state and 5.0% by others.

The volume of growing stock was 2 205 mil. m<sup>3</sup>, of which 49.8% was pine, 30.3% spruce and 19.9% non-coniferous.

### Commercial roundwood removals



### Increment and drain of the growing stock

Period	Increment	Drain
Mil. m <sup>3</sup> per year		
1970–74	58	55
1975–79	67	46
1980–84	73	53
1985–89	78	55
1990–94	82	53
1995–99	87	65
2000–04	96	70
2005–09	103	67
2010–11	104	72

m<sup>3</sup> = cubic metre, solid volume over bark

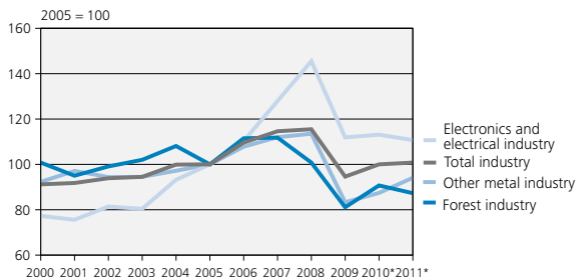
# Manufacturing

## Industrial statistics, 2010

Branch of industry (TOL 2008)	Establishments	Personnel <sup>1)</sup> 1 000	Value added in production € million	%
<b>Total industry</b>	<b>26 515</b>	<b>344</b>	<b>32 102</b>	<b>100</b>
Mining and quarrying	946	5	626	1.9
Manufacturing	23 190	321	26 534	82.7
Food products	1 726	29	2 071	6.5
Beverages	90	3	371	1.2
Textiles	832	2	176	0.5
Wearing apparel	1 090	2	107	0.3
Leather and related products	231	2	79	0.2
Wood and of products of wood and cork	2 337	21	1 161	3.6
Paper and paper products	252	21	2 984	9.3
Printing and reproduction of recorded media	1 218	10	558	1.7
Coke and refined petroleum products	19	2	698	2.2
Chemicals and chemical products	362	12	1 791	5.6
Basic pharmaceutical products and pharmaceutical preparations	33	4	807	2.5
Rubber and plastic products	639	13	920	2.9
Other non-metallic mineral products	948	14	894	2.8
Basic metals	175	14	1 386	4.3
Fabricated metal products, except machinery and equipment	4 958	36	2 120	6.6
Computer, electronic and optical products	582	32	3 153	9.8
Electrical equipment	460	15	1 315	4.1
Machinery and equipment n.e.c.	1 586	43	3 550	11.1
Motor vehicles, trailers and semi-trailers	275	6	349	1.1
Other transport equipment	423	9	311	1.0
Furniture	1 076	7	350	1.1
Other manufacturing	1 338	4	250	0.8
Repair and installation of machinery and equipment	2 539	19	1 133	3.5
Electricity, gas, steam and air conditioning supply	867	11	3 896	12.1
Water supply; sewerage, waste management and remediation activities	1 512	7	1 045	3.3

1) Paid personnel in total

## Volume index of industrial output (TOL 2008)



## Construction

### Construction

Completed buildings	Unit	2009	2010	*2011
<b>All buildings</b>	<b>mil. m<sup>3</sup></b>	<b>38.64</b>	<b>33.00</b>	<b>35.29</b>
Residential	mil. m <sup>3</sup>	9.95	10.58	12.62
Industrial	mil. m <sup>3</sup>	6.53	3.60	3.42
Agricultural	mil. m <sup>3</sup>	3.45	3.81	3.18
Other	mil. m <sup>3</sup>	18.71	15.01	16.07
<b>Completed dwellings</b>				
<b>All dwellings</b>	<b>number</b>	<b>22 201</b>	<b>25 894</b>	<b>31 361</b>
Detached houses	number	10 620	10 484	11 105
Attached houses	number	2 325	2 867	3 697
Blocks of flats	number	8 493	11 762	15 988
Other than residential buildings	number	763	781	571
<b>Volume index of newbuilding</b>	2005 = 100	85.7	96.9	104.6
<b>Building cost index</b>	2010 = 100	.	100.0	1) 103.3
<b>Building cost index</b>	2005 = 100	113.0	114.2	1) 118.0
<b>Building cost index</b>	2000 = 100	126.1	127.5	1) 131.7
<b>Building cost index</b>	1995 = 100	137.1	138.6	1) 143.2

1) Final data

## Energy

### Total energy consumption

	2010 Petajoule (PJ)	*2011	%	Annual change, % 2010	*2011
Oil	353	334	24.1	5	-5
Wood fuels	320	309	22.2	19	-3
Nuclear energy	239	243	17.5	-3	2
Coal	189	150	10.8	25	-21
Natural gas	149	134	9.6	11	-10
Peat	95	87	6.3	31	-8
Net imports of electricity	38	50	3.6	-13	32
Hydro power	46	44	3.2	1	-3
Wind power	1	2	0.1	6	64
Other energy sources	36	36	2.6	10	0
<b>Total</b>	<b>1 464</b>	<b>1 389</b>	<b>100</b>	<b>10</b>	<b>-5</b>
Renewable energy sources 1), %	27.0	27.7			

1) Includes, inter alia, wood fuels, hydro and wind power, the biodegradable proportion of recycled fuels

### Production of electricity

	2009 GWh	2010	*2011	%
Hydro power	12 573	12 743	12 306	17
Wind power	277	294	483	1
Nuclear power	22 601	21 889	22 281	32
Condensing power etc.	8 963	14 179	9 624	14
Combined heat and power, industry	8 866	10 250	10 952	16
Combined heat and power, district heat	15 928	17 848	14 912	21
<b>Total production</b>	<b>69 207</b>	<b>77 203</b>	<b>70 559</b>	<b>100</b>

## Foreign trade

	Imports		Exports		Trade balance
	€ million	%	€ million	%	€ million
2000	36 837	<sup>1)</sup> 42.7	49 484	<sup>1)</sup> 57.3	12 647
2001	35 891	<sup>1)</sup> 42.9	47 800	<sup>1)</sup> 57.1	11 910
2002	35 611	<sup>1)</sup> 43.0	47 245	<sup>1)</sup> 57.0	11 634
2003	36 775	<sup>1)</sup> 44.2	46 378	<sup>1)</sup> 55.8	9 604
2004	40 730	<sup>1)</sup> 45.4	48 917	<sup>1)</sup> 54.6	8 187
2005	47 027	<sup>1)</sup> 47.3	52 453	<sup>1)</sup> 52.7	5 426
2006	55 253	<sup>1)</sup> 47.3	61 489	<sup>1)</sup> 52.7	6 237
2007	59 616	<sup>1)</sup> 47.6	65 688	<sup>1)</sup> 52.4	6 072
2008	62 402	<sup>1)</sup> 48.8	65 580	<sup>1)</sup> 51.2	3 178
2009	43 655	<sup>1)</sup> 49.2	45 063	<sup>1)</sup> 50.8	1 409
2010	51 899	<sup>1)</sup> 49.7	52 439	<sup>1)</sup> 50.3	539
2011*	60 387	<sup>1)</sup> 51.6	56 668	<sup>1)</sup> 48.4	-3 719

### Main trading partners, 2011\*

Russia	11 315	18.7	5 330	9.4	-5 985
Germany	7 485	12.4	5 630	9.9	-1 855
Sweden	6 025	10.0	6 726	11.9	701
China	4 381	7.3	2 663	4.7	-1 718
Netherlands	3 134	5.2	3 836	6.8	703
United States	2 217	3.7	2 908	5.1	691
United Kingdom	1 770	2.9	2 914	5.1	1 144
France	1 970	3.3	1 758	3.1	-212
Norway	1 947	3.2	1 596	2.8	-350
Italy	1 581	2.6	1 345	2.4	-236
Other countries	18 563	30.7	21 961	38.8	3 398
<b>Total</b>	<b>60 387</b>	<b>100</b>	<b>56 668</b>	<b>100</b>	<b>-3 719</b>

### Trade by country group, 2011\*

EU	31 617	52.4	31 531	55.6	-86
Euro area	19 646	32.5	17 428	30.8	-2 218
Rest of Europe	14 657	24.3	9 960	17.6	-4 697
OECD	37 093	61.4	38 339	67.7	1 246
External trade	28 770	47.6	25 136	44.4	-3 634
Developing countries	9 711	16.1	9 188	16.2	-523

### Imports and exports by products by activity (CPA 2008), 2011\*

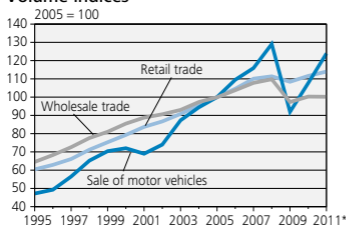
Imports	€ million	%
Chemical industry products	11 359	18.8
Products from mining and quarrying	10 909	18.1
Electric and electronics industry products	8 096	13.4
Machinery and equipment	5 088	8.4
Transport equipment	4 512	7.5
Other	20 423	33.8
Exports	€ million	%
Chemical industry products	12 327	21.8
Forest industry products	11 095	19.6
Metal and metal products	9 156	16.2
Machinery and equipment	7 865	13.9
Electric and electronics industry products	7 610	13.4
Other	8 614	15.2

1) Of total trade

## Trade

### Domestic trade (TOL 2008)

#### Volume indices



#### Turnover <sup>1)</sup>

€ million % <sup>2)</sup>

#### 2010

Sale of motor vehicles	15 789	7.6
Wholesale trade	68 686	9.8
Retail trade	35 292	3.5

#### 2011\*

Sale of motor vehicles	18 426	16.7
Wholesale trade	74 044	7.8
Retail trade	37 092	5.1

1) The turnover data for the year 2010 is based on the annual statistics on Finnish enterprises. The turnover data for 2011 are based on the annual change in the turnover of trade.

2) Annual change

## Housing

### Buildings and summer cottages

	1990	2000	2008	2009	2010
	1 000				
Residential buildings	1 005	1 111	1 214	1 224	1 235
Detached houses	908	993	1 083	1 092	1 102
Attached houses	53	66	75	76	76
Blocks of flats	45	52	56	56	57
Other buildings	158	189	208	210	211
Summer cottages	368	451	482	485	489
Saunas <sup>1)</sup>	932	1 212	1 463	1 479	1 502

1) Only saunas in flats. The total number of saunas was estimated to be over 2 000 000 at the end of 2010.

### Household-dwelling units by type and size, 2010 <sup>1)</sup>

Size of household-dwelling unit	All buildings	Detached houses	Attached houses	Blocks of flats	Other or unknown
1 person	1 040 378	216 337	148 446	645 759	29 836
2 persons	837 234	389 411	115 503	319 440	12 880
3 persons	290 767	161 062	44 151	81 680	3 874
4 persons	238 135	162 138	32 082	41 460	2 455
5 persons	90 845	69 113	8 583	12 060	1 089
6+ persons	39 838	31 304	2 643	5 044	847
<b>Total</b>	<b>2 537 197</b>	<b>1 029 365</b>	<b>351 408</b>	<b>1 105 443</b>	<b>50 981</b>

1) A household-dwelling unit consists of all persons occupying the same dwelling on a permanent basis

### Dwelling units by tenure status of dwelling, %

	1990	2000	2008	2009	2010
Owner-occupied dwelling	66.8	58.0	59.2	59.4	59.2
Rented dwelling <sup>1)</sup>	24.7	30.8	29.8	29.3	29.3
Right of occupancy dwelling	..	1.0	1.2	1.2	1.3
Other form of tenure or unknown	8.4	10.1	9.9	10.2	10.3

1) Includes also official residences and employer-provided dwellings

## Housing

### Dwelling units

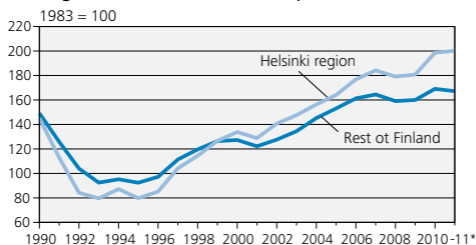
	Unit	1990	2000	2009	2010
Dwelling units	1 000	2 210	2 512	2 784	2 808
Floor area per dwelling	m <sup>2</sup>	74	77	79	80
Floor area per person	m <sup>2</sup>	31.4	35.3	38.9	39.1
Persons per room		0.7	0.6	0.6	0.6
Overcrowding <sup>1)</sup> , % of dwelling population	%	30.5	23.7	18.0	17.9

1) More than one person per room, excl. kitchen

### Prices of dwellings

	Old blocks of flats		New blocks of flats	
	Helsinki region	Rest of Finland	Helsinki region	Rest of Finland
Average unencumbered prices per m <sup>2</sup> , €				
2007	2 840	1 417	3 748	2 540
2008	2 893	1 445	3 846	2 670
2009	2 932	1 469	3 780	2 723
2010	3 279	1 593	4 349	2 873
2011*	3 433	1 618	4 553	3 001

### Dwellings in old blocks of flats: real price indices



### Prices of real estate

	Detached houses		Plots for detached houses	
	Average price €/m <sup>2</sup>	Real price index 2005 = 100	Average price €/m <sup>2</sup>	Real price index 2005 = 100
2007	1 384	109.8	12.8	118.6
2008	1 379	106.5	13.3	119.6
2009	1 385	104.0	14.1	115.3
2010	1 474	111.1	16.7	128.3
2011	1 508	110.3	18.0	120.4

### Average rents of rented dwellings

	2006	2007	2008	2009	2010	2011
	€/m <sup>2</sup> /month					
Government-subsidised dwellings	7.68	7.96	8.38	8.93	9.28	9.60
Non-subsidised dwellings	8.93	9.35	9.73	10.07	10.40	10.74
All rented dwellings	8.37	8.72	9.04	9.48	9.86	10.19

# Transport and Tourism

## Transport

	Unit	2008	2009	2010	2011
<b>Transport network</b>					
Length of railway line <sup>1)</sup>	km	5 919	5 919	5 919	5 944
Length of tram line	km	89	91	91	95
Length of underground line	km	21	21	21	21
Highways <sup>2)</sup>	km	78 141	78 161	78 162	78 139
Streets <sup>3)</sup>	km	27 743	28 834	28 531	..
Coastal waterways	km	10 037	10 036	10 073	10 079
Inland waterways	km	9 496	9 738	9 747	9 791
<b>Passengers by mode of transport</b>					
Railway transport	mil.	66.9	67.6	68.9	68.4
Tramway transport	mil.	53.9	54.9	54.5	53.7
Underground transport	mil.	57.6	57.3	57.1	61.5
Bus and motor coach transport <sup>4)</sup>	mil.	331.4	325.9	336.3	..
Water transport <sup>5)</sup>	mil.	20.8	21.1	21.7	22.0
Air transport <sup>5)</sup>	mil.	17.5	16.2	16.5	19.1
<b>Domestic passenger transport performance, passenger km</b>					
Public transport	mil.	13 572	13 223	13 248	13 209
Railway transport	mil.	4 052	3 876	3 959	3 882
Tramway transport	mil.	112	114	113	118
Underground transport	mil.	420	418	417	397
Bus and motor coach transport	mil.	7 540	7 540	7 540	7 540
Coastal transport	mil.	124	124	126	124
Inland water transport	mil.	12	11	15	11
Air transport	mil.	1 312	1 138	1 078	1 137
Passenger car transport	mil.	63 400	64 330	64 745	65 490
<b>Domestic goods transport performance, freight tonne km</b>					
Railway transport	mil.	10 777	8 872	9 750	9 395
Road transport	mil.	27 264	23 770	25 401	*23 770
Coastal transport	mil.	2 948	2 528	3 635	3 973
Inland water transport	mil.	279	309	246	262
Air transport	mil.	2	1	1	1

1) State railway line

2) Roads maintained by the Finnish Transport Agency (31 Dec.). Ramps and ferry routes excluded

3) Roads and streets maintained by local authority

4) Includes charter transport but not private transport

5) National and international

## Road and water traffic accidents

	2008	2009	2010	*2011
Road traffic accidents				
Involving personal injury	6 881	6 414	6 072	6 406
Fatal	321	255	241	273
Alcohol-related	881	799	709	679
Deaths	344	279	272	292
Persons injured	8 513	8 057	7 673	7 929
Water traffic accidents	1 942	1 595	1 595	..
Deaths	54	56	65	55

## Transport and Tourism

### Motor vehicles

	2009	2010	2011
Passenger cars	2 776 664	2 877 484	2 978 729
per 1 000 inhabitants	519	535	551
Lorries and vans	443 912	464 408	488 939
Other	25 838	26 296	26 689
<b>Total</b>	<b>3 246 414</b>	<b>3 368 188</b>	<b>3 494 357</b>
per 1 000 inhabitants	607	627	647
Motorcycles	216 443	226 877	236 661
Tractors	370 565	376 807	383 951
Snowmobiles <sup>1)</sup>	117 051	121 976	125 937

1) Excl. Åland

### Number of overnight stays by foreigners at accommodation establishments

Country of domicile	2010	%	*2011	Annual change, %	
				%	*2011
Russia	1 056 424	21.1	1 286 832	23.4	21.8
Sweden	517 849	10.3	552 190	10.0	6.6
Germany	510 280	10.2	541 264	9.8	6.1
United Kingdom	406 272	8.1	389 692	7.1	-4.1
Estonia	205 429	4.1	228 488	4.1	11.2
France	213 414	4.3	214 034	3.9	0.3
United States	178 482	3.6	201 928	3.7	13.1
Norway	159 377	3.2	173 248	3.1	8.7
Netherlands	165 779	3.3	164 942	3.0	-0.5
Italy	142 389	2.8	156 806	2.8	10.1
Other	1 449 373	29.0	1 601 350	29.1	10.5
<b>Total</b>	<b>5 005 068</b>	<b>100</b>	<b>5 510 774</b>	<b>100</b>	<b>10.1</b>

### Finns' leisure trips abroad <sup>1)</sup>

Country of destination	2008	2009	2010	2011
Estonia	714 000	718 000	900 000	1 020 000
Spain	386 000	390 000	380 000	599 000
Sweden	338 000	378 000	459 000	378 000
Germany	131 000	169 000	222 000	232 000
United Kingdom	89 000	141 000	190 000	202 000
Russia	125 000	125 000	192 000	181 000
Italy	156 000	173 000	169 000	161 000
France	90 000	111 000	120 000	151 000
Turkey	52 000	104 000	107 000	110 000
Thailand	89 000	121 000	111 000	94 000
Other	1 158 000	1 166 000	1 124 000	1 165 000
<b>Total</b>	<b>3 328 000</b>	<b>3 596 000</b>	<b>3 974 000</b>	<b>4 293 000</b>

1) Trips with overnight stop in destination country made by the population aged 15 to 74

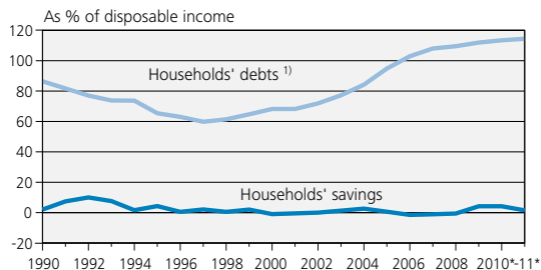
### Travel account, € million

	2006	2007	2008	2009	*2010	*2011
Income	1 891	2 070	2 181	2 022	2 189	2 768
Expenses	2 723	2 908	3 053	3 136	3 201	3 433
Net	-832	-838	-872	-1 114	-1 012	-665

## Outstanding credit by borrower sector

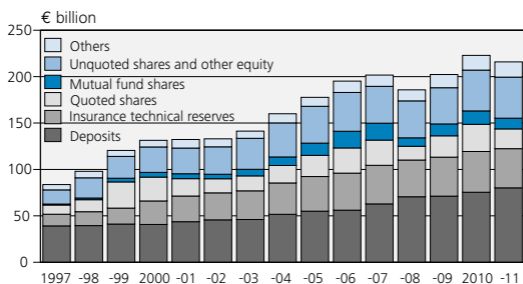


## Households' indebtedness rate and savings ratio



1) Incl. households' share of the debts of housing companies

## Financial assets of households



## Financing and Insurance

### Stock of deposits and loans <sup>1)</sup> by monetary financial institutions, 2011\*

End of year	€ million	Interest rate, %
<b>Public's deposits from the euro area</b>	<b>126 680</b>	<b>1.02</b>
Non-financial corporations <sup>2)</sup>	26 293	0.80
Households <sup>3)</sup>	82 612	1.05
<b>Loans to the public in the euro area</b>	<b>180 977</b>	<b>2.83</b>
Non-financial corporations <sup>2)</sup>	60 361	2.84
Households <sup>3)</sup>	109 551	2.88
Housing loans	81 781	2.51
Consumer credit and other loans	27 770	3.96

1) Euro-denominated – 2) Incl. housing corporations – 3) Incl. non-profit institutions serving households

### New loans by monetary financial institutions <sup>1)</sup>, 2011\*

	€ million	Interest rate, %
<b>To non-financial corporations and housing corporations</b>	<b>82 874</b>	<b>2.66</b>
Overdrafts	45 437	2.60
<b>To households <sup>2)</sup></b>	<b>82 061</b>	<b>5.56</b>
Overdrafts and credit card credits	51 131	7.23
Housing loans	22 537	2.50
Consumer credit	3 849	3.95
Other loans	4 544	3.32

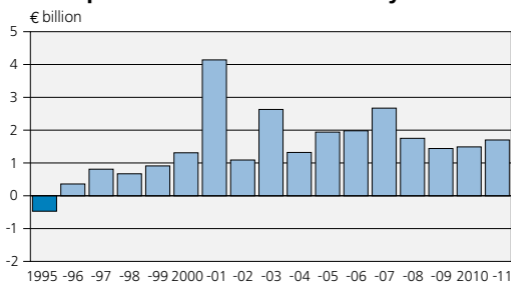
1) Euro-denominated to the public in the euro area

2) Incl. non-profit institutions serving households

### Market rates of interest, %

	2007	2008	2009	2010	2011
<b>Euribor rates</b>					
1 month	4.080	4.276	0.888	0.570	1.178
3 months	4.277	4.644	1.218	0.813	1.393
12 months	4.449	4.826	1.610	1.352	2.009
<b>Yields on government bonds</b>					
5 years	4.18	3.88	2.70	1.78	2.08
10 years	4.29	4.30	3.74	3.00	3.00

### Banks' profit/loss for the financial year



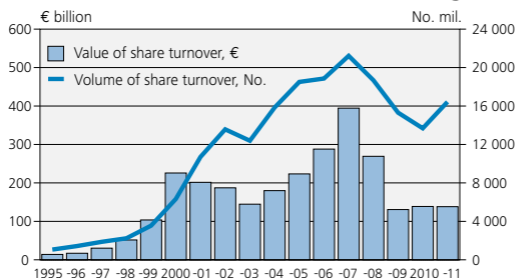
## Financing and Insurance

### OMX share indices (28.12.1990 = 1 000)

	2009	% <sup>1)</sup>	2010	% <sup>1)</sup>	2011	% <sup>1)</sup>
OMX Helsinki	5 673	-32.9	6 894	21.5	6 470	-6.2
OMX Helsinki Cap	3 167	-26.7	4 175	31.8	4 089	-2.1

1) Annual change

### Share turnover at Helsinki Stock Exchange



### Investments in Finland and from Finland

Investment stock	2007	2008	*2009	*2010	*2011
	€ billion				
<b>Direct investments</b>					
Finnish investments abroad	79.2	82.0	89.7	102.6	107.3
Foreign investments in Finland	62.3	60.0	58.8	64.1	64.1
<b>Securities investments</b>					
Finnish investments in foreign securities	173.9	129.2	174.9	212.0	208.0
Foreign investments in Finnish securities	257.9	177.5	203.3	225.2	218.1

### Exchange rates, 2011

#### Average exchange rate of euro

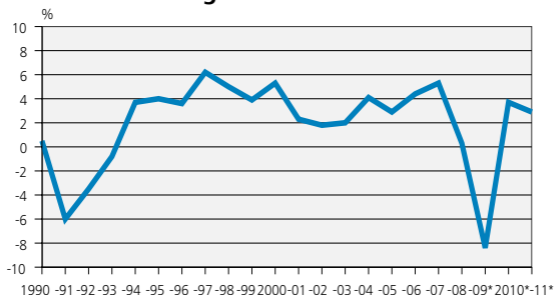
United States	dollar (USD)	= 1.3920	Lithuania	litas (LTL)	= 3.4528
Canada	dollar (CAD)	= 1.3761	Poland	zloty (PLN)	= 4.1206
United Kingdom	pound (GBP)	= 0.86788	Russia	rouble (RUB)	= 40.8846
Sweden	krone (SEK)	= 9.0298	China	yuan renminbi (CNY)	= 8.9960
Norway	krone (NOK)	= 7.7934	Thailand	baht (THB)	= 42.429
Denmark	krone (DKK)	= 7.4506	Turkey	lira (TRY)	= 2.3378
Switzerland	franc (CHF)	= 1.2326	Japan	yen (JPY)	= 110.96
Czech Republic	koruna (CZK)	= 24.590	South Africa	rand (ZAR)	= 10.0970
Latvia	lats (LVL)	= 0.7063	Australia	dollar (AUD)	= 1.3484

## National Accounts

### Gross domestic product at market prices

	At current prices		At 2000 prices € billion
	€ billion	€/inhabitant	
2001	139.3	26 848	135.2
2002	143.6	27 621	137.7
2003	145.5	27 917	140.5
2004	152.3	29 124	146.3
2005	157.4	30 009	150.5
2006	165.8	31 477	157.2
2007	179.8	34 003	165.5
2008	185.7	34 944	166.0
2009*	172.5	32 313	152.2
2010*	179.7	33 509	157.8
2011*	191.6	35 559	162.3

### GDP: annual change in volume



### Industries' value added as a proportion of gross value added, %

Industry (TOL 2008)	2006	2007	2008	*2009	*2010
Agriculture, forestry and fishing	2.4	3.0	2.7	2.8	3.0
Whole industry	26.3	26.4	24.6	20.4	21.7
Construction	6.9	7.1	7.3	7.1	6.6
Trade; transportation and storage; accommodation and food services	17.0	16.8	17.2	17.1	17.0
Information and communication	4.8	4.8	4.8	5.1	5.0
Financial and insurance activities	2.9	3.2	2.8	2.9	2.8
Real estate activities	10.7	10.3	10.8	11.9	11.8
Professional, scientific, technical, administration and support service activities	6.7	7.0	7.5	7.8	7.8
Public administration, defence, education, human health and social work activities	19.4	18.6	19.2	21.5	21.2
Other services	2.9	2.8	2.9	3.2	3.2
<b>Gross domestic product at basic prices</b>	<b>100</b>	<b>100</b>	<b>100</b>	<b>100</b>	<b>100</b>
Primary production	2.4	3.0	2.7	2.8	3.0
Secondary production	33.2	33.5	32.0	27.5	28.3
Services	64.3	63.5	65.3	69.7	68.7

## National Accounts

### National balance of supply and demand

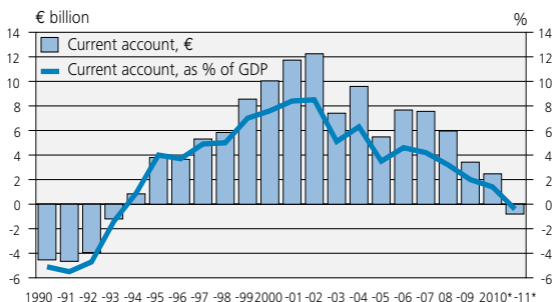
	€ billion		Annual change in volume, %			
	*2011	%	2008	*2009	*2010	*2011
<b>Supply</b>						
GDP	191.6	71.6	0.3	-8.4	3.7	2.9
Imports	75.9	28.4	7.5	-16.4	7.7	0.1
Total supply	267.5	100	2.4	-10.8	4.8	2.1
<b>Demand</b>						
Exports	74.9	28.2	5.8	-21.5	7.8	-0.8
Consumption expenditure	151.0	56.8	1.9	-1.6	2.1	2.6
– private	105.3	39.6	1.9	-2.7	3.0	3.3
– government	45.7	17.2	1.9	1.1	0.2	0.8
Gross fixed capital formation	36.7	13.8	-0.6	-13.3	2.6	4.6
– private	31.9	12.0	-0.9	-15.7	4.1	5.0
– government	4.8	1.8	1.5	5.0	-6.7	2.4
Changes in inventories, acquisition of valuables	3.3	1.3	..	..	..	..
Total demand	265.9	100	2.4	-11.1	4.4	2.8
Statistical discrepancy	1.5		..	..	..	..

### Net national income, %

	2008	*2009	*2010	*2011
Wages and salaries <sup>1)</sup>	46.9	50.2	48.6	47.8
Employers' social contributions	11.5	12.0	11.6	11.0
Net property and entrepreneurial income	27.9	23.7	25.9	26.4
Taxes on production and imports re- ceived by general government less subsidies paid by general government	13.6	14.1	13.8	14.8
<b>Net national income</b>	<b>100</b>	<b>100</b>	<b>100</b>	<b>100</b>
€ million	157 112	146 048	153 833	163 807

1) Including wages and salaries receivable from the rest of the world, net. Excluding income from employee stock options.

### Current account <sup>1)</sup>



1) According to National Accounts

# Government Finance

## Central government budget

	Balance sheet 2010 € million	Budget 1) 2011	Budget proposal 2012	Change 2011–2012 € million %	
<b>Revenue</b>					
Taxes and other levies	32 207	35 830	38 200	2 370	7
On income and property	10 061	11 844	12 119	275	2
On turnover	14 416	15 365	16 450	1 085	7
Excise duties	5 284	5 990	6 700	710	12
Other taxes	2 339	2 520	2 809	289	11
Other levies	107	111	123	12	11
Miscellaneous revenues	5 069	4 703	4 849	146	3
Interest income, income from sale of shares and profits entered as income	1 486	1 752	2 009	257	15
Loans, net	11 561	8 241	7 295	-946	-11
<b>Total</b>	<b>50 323</b>	<b>50 527</b>	<b>52 353</b>	<b>1 827</b>	<b>4</b>
<b>Expenditure</b>					
Parliament	120	133	143	10	8
President of the Republic	15	22	19	-3	-14
Prime Minister's Office	78	79	82	3	4
Ministries:					
Foreign Affairs	1 174	1 268	1 283	14	1
Justice	813	836	856	20	2
Interior	1 329	1 222	1 245	23	2
Defence	2 732	2 856	2 853	-3	-0
Finance	16 278	15 294	16 196	902	6
Education and Culture	6 374	6 730	6 663	-67	-1
Agriculture and Forestry	2 761	2 829	2 704	-124	-4
Transport and Communications	2 252	2 059	2 375	316	15
Employment and the Economy	2 592	3 423	3 367	-56	-2
Social Affairs and Health	11 165	11 518	12 111	592	5
Environment	307	323	271	-52	-16
Rents on State debt	1 890	1 933	2 185	252	13
<b>Total</b>	<b>49 880</b>	<b>50 527</b>	<b>52 353</b>	<b>1 827</b>	<b>4</b>

1) Excl. supplementary budget

## Debt

	Central government debt		General government debt (EDP)	
	€ billion	as % of GDP	€ billion	as % of GDP
2000	63.4	48.0	57.9	43.8
2001	61.8	44.3	59.1	42.5
2002	59.3	41.2	59.6	41.5
2003	63.3	43.5	64.8	44.5
2004	63.8	41.9	67.6	44.4
2005	60.0	38.1	65.7	41.7
2006	58.9	35.5	65.7	39.6
2007	56.1	31.2	63.2	35.2
2008	54.4	29.3	63.0	33.9
2009*	64.3	37.3	75.0	43.5
2010*	75.2	41.8	87.0	48.4
2011*	79.7	41.6	93.0	48.6

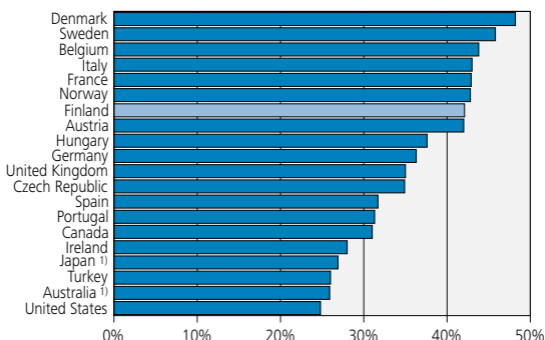
## Government Finance

### Taxes

	Taxes, € million			Tax rate, % of GDP		
	*2009	*2010	*2011	*2009	*2010	*2011
<b>All taxes</b>	<b>73 835</b>	<b>75 968</b>	<b>82 185</b>	<b>42.8</b>	<b>42.3</b>	<b>42.9</b>
State taxes	34 061	34 680	39 292	19.7	19.3	20.5
Income tax	9 325	9 437	11 057	5.4	5.3	5.8
Value added tax	14 951	15 256	17 005	8.7	8.5	8.9
Municipal taxes	17 595	18 535	19 167	10.2	10.3	10.0
Social security funds	22 026	22 601	23 536	12.8	12.6	12.3
European Union	153	152	190	0.1	0.1	0.1

### Tax rate in selected countries, 2010\*

Tax revenue as % of GDP/GNP



1) 2009

### Official development assistance

	Net disbursements, € million			As % of GNI
	Bilateral assistance	Multilateral assistance	Total assistance	
2000	235.6	166.9	402.4	0.31
2001	250.6	183.8	434.4	0.31
2002	266.7	223.7	490.4	0.34
2003	273.2	221.1	494.3	0.34
2004	323.4	223.8	547.2	0.36
2005	480.1	245.6	725.7	0.46
2006	377.3	283.9	661.3	0.40
2007	426.6	290.2	716.9	0.40
2008	480.6	327.6	808.2	0.43
2009	568.1	358.4	926.5	*0.53
2010	633.5	372.9	1 006.4	*0.55
2011*	614.1	399.2	1 013.3	0.52

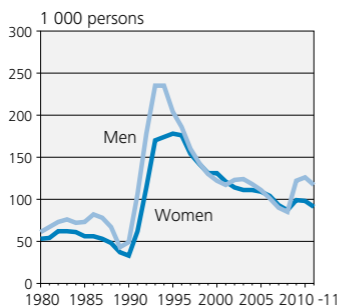
## Labour Market

### Population by activity

	2000	2009	2010	2011
	1 000 persons			
<b>Mean population</b>	<b>5 176</b>	<b>5 339</b>	<b>5 363</b>	<b>5 388</b>
<b>Population aged 15–74</b>	<b>3 901</b>	<b>4 025</b>	<b>4 043</b>	<b>4 059</b>
Labour force	2 589	2 678	2 672	2 682
Employed	2 335	2 457	2 447	2 474
Unemployed	253	221	224	209
Inactive population	1 312	1 347	1 372	1 376
Labour force rate, %	66.4	66.5	66.1	66.1
Unemployment rate, %	9.8	8.2	8.4	7.8
Employment rate (persons aged 15–64), %	66.9	68.3	67.8	68.6
<b>Employed</b>	<b>2 335</b>	<b>2 457</b>	<b>2 447</b>	<b>2 474</b>
<b>Hours worked</b>				
Part-time work	286	343	358	369
Full-time work	2 047	2 113	2 087	2 102
Unknown	2	2	2	2
<b>Employer</b>				
Private	1 692	1 794	1 774	1 796
Local government	486	502	510	517
Central government	151	155	153	151
Unknown	6	6	10	10
<b>Industrial status</b>				
Self-employed persons and assisting family members	319	334	328	331
Wage and salary earners	2 016	2 123	2 120	2 143
<b>Industry (TOL 2008)</b>				
Agriculture, forestry and fishing; mining and quarrying	146	119	115	110
Manufacturing; electricity, gas, steam and air conditioning and water supply; sewerage and waste management	473	406	388	384
Construction	147	175	172	176
Wholesale and retail trade; repair of motor vehicles and motorcycles	277	296	298	303
Transportation and storage	152	153	156	147
Accommodation and food service activities	77	85	83	83
Information and communication	89	94	95	99
Financial, insurance and real estate activities	70	70	71	75
Professional, scientific and technical activities; administrative and support service activities	184	244	250	253
Public administration and defence; compulsory social security	115	116	117	116
Education	165	164	174	179
Human health and social work activities	326	388	379	396
Arts, entertainment and recreation; other service activities	109	138	139	141
Industry unknown	6	9	12	11
<b>Hours worked, million hours</b>	<b>4 019</b>	<b>3 958</b>	<b>3 998</b>	<b>4 034</b>

## Labour Market

### Unemployment



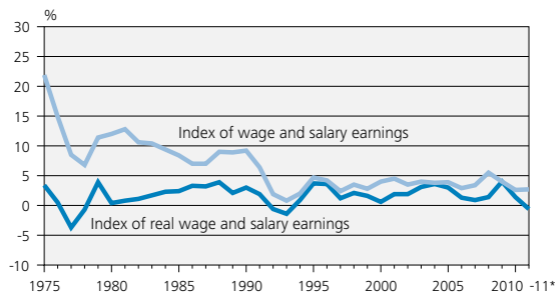
	Unemployment rate, %		
	Total	Men	Women
1996	14.6	14.3	14.9
1997	12.7	12.3	13.0
1998	11.4	10.9	12.0
1999	10.2	9.8	10.7
2000	9.8	9.1	10.6
2001	9.1	8.6	9.7
2002	9.1	9.1	9.1
2003	9.0	9.2	8.9
2004	8.8	8.7	8.9
2005	8.4	8.2	8.6
2006	7.7	7.4	8.1
2007	6.9	6.5	7.2
2008	6.4	6.1	6.7
2009	8.2	8.9	7.6
2010	8.4	9.1	7.6
2011	7.8	8.4	7.1

## Wages, Salaries and Labour Costs

### Income level of wage and salary earners

	Index of wage and salary earnings 2005 = 100		Annual change, %			
	2010	*2011	Nominal		Real	
			2010	*2011	2010	*2011
<b>Total</b>	<b>119.8</b>	<b>123.1</b>	<b>2.6</b>	<b>2.7</b>	<b>1.4</b>	<b>-0.6</b>
Private sector	119.1	122.5	2.3	2.8	1.0	-0.6
Local government	120.8	123.8	3.4	2.5	2.2	-0.8
Central government	124.8	128.3	3.3	2.9	2.1	-0.5
Men	118.5	121.7	2.1	2.7	0.9	-0.7
Women	120.8	124.2	3.1	2.8	1.9	-0.5

### Index of wage and salary earnings, average annual changes

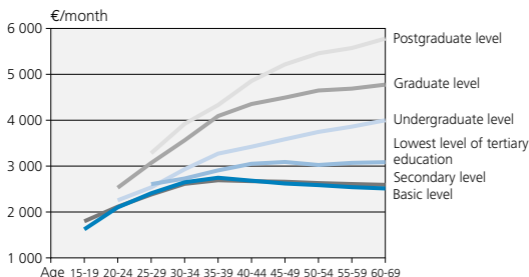


## Wages, Salaries and Labour Costs

### Total earnings by employer sector and gender, 2010

Employer sector	Full-time employees			
	Number	Monthly earnings, €		
		Total	Men	Women
Private	939 681	3 108	3 338	2 759
Primary production	1 337	3 121	3 168	2 830
Manufacturing	361 035	3 152	3 234	2 842
Services	577 309	3 081	3 444	2 737
Municipality	376 945	2 792	3 262	2 663
State	77 634	3 411	3 714	3 072
<b>Total</b>	<b>1 394 260</b>	<b>3 040</b>	<b>3 352</b>	<b>2 735</b>

### Total earnings by level of education and age, 2010

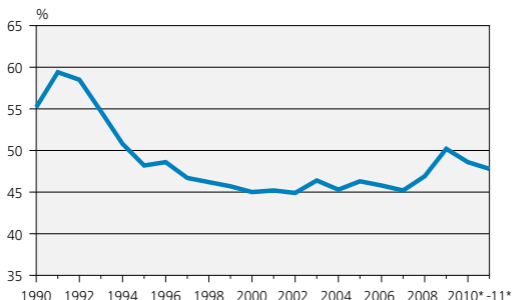


### Total earnings by occupation and gender, 2010

Main category of occupation	Full-time employees			
	Number	Monthly earnings, €		
		Total	Men	Women
Armed forces	9 002	3 929	3 960	2 981
Legislators, senior officials and managers	57 158	5 430	5 852	4 632
Professionals	293 897	3 862	4 231	3 531
Technicians and associate professionals	312 642	3 082	3 430	2 805
Clerks	118 788	2 488	2 642	2 444
Service workers and shop and market sales workers	228 525	2 300	2 557	2 209
Skilled agricultural and fishery workers	6 823	2 175	2 234	2 106
Craft and related trades workers	150 591	2 745	2 781	2 317
Plant and machine operators and assemblers	124 457	2 784	2 889	2 391
Elementary occupations	89 641	2 126	2 395	1 928
Unknown	2 737	2 912	3 002	2 799
<b>Total</b>	<b>1 394 260</b>	<b>3 040</b>	<b>3 352</b>	<b>2 735</b>

## Wages, Salaries and Labour Costs

### Wages and salaries <sup>1)</sup> as % of national income



1) Including wages and salaries receivable from the rest of the world, net. Excluding income from employee stock options.

## Income and Consumption

### Income recipients <sup>1)</sup> by income bracket, 2010

Income bracket, €	Income recipients			Income %	Taxes %	Taxes as % of income
	Men 1 000	Women	Total %			
- 4 999	236	238	10.5	0.8	0.1	3.5
5 000- 9 999	225	322	12.2	3.7	1.1	6.8
10 000-14 999	239	398	14.1	6.9	3.1	10.0
15 000-19 999	218	288	11.2	7.7	5.3	15.1
20 000-24 999	201	264	10.3	9.1	7.0	16.9
25 000-29 999	207	263	10.4	11.2	9.4	18.4
30 000-39 999	358	317	15.0	20.2	19.8	21.5
40 000-49 999	209	122	7.3	12.8	14.6	25.1
50 000-59 999	116	52	3.7	7.9	10.1	27.8
60 000-79 999	97	37	3.0	7.9	10.9	30.2
80 000-99 999	36	12	1.1	3.7	5.6	33.2
100 000-	42	11	1.1	8.1	12.9	35.1
<b>Total</b>	<b>2 185</b>	<b>2 324</b>	<b>100</b>	<b>100</b>	<b>100</b>	<b>21.9</b>

The average income in 2010 was €25 649 per income recipient, €29 711 for men and €21 837 for women.

1) Natural persons

## Income and Consumption

### Income of households and low income earning

	Disposable income (in 2010 money)			Persons in low income households 1 000	Low income earners of population %
	Mean	Median	Low income limit		
	€/household		€/consumption unit <sup>1)</sup>		
2000	32 485	26 714	11 470	576.1	11.3
2001	32 763	27 586	11 759	575.8	11.2
2002	33 611	28 563	12 143	587.2	11.4
2003	34 714	29 311	12 453	590.9	11.5
2004	36 369	29 890	13 012	629.1	12.2
2005	37 275	31 247	13 500	660.5	12.8
2006	37 765	31 510	13 458	651.8	12.5
2007	38 749	31 641	13 777	706.9	13.5
2008	38 120	31 576	13 940	696.1	13.3
2009	39 032	32 861	14 407	690.3	13.1
2010	40 086	33 407	14 776	716.0	13.5

1) Consumption units were calculated by giving the members of a household the following weights: the first adult 1, other persons aged 14 or over 0.5 and 0 to 13-year-old children 0.3.

### Household expenditure

	1980	1990	2000	*2009	*2010
	%				
Housing and energy	18.6	18.2	24.7	26.9	26.9
Food and non-alcoholic beverages	21.2	16.3	12.6	12.9	12.3
Recreation and culture	10.2	11.2	11.3	11.7	11.5
Transport	14.4	14.5	12.9	10.2	11.0
Hotels, cafés and restaurants	6.4	7.6	6.4	6.5	6.3
Furnishings, household equipment and routine maintenance of the house	6.0	5.4	4.8	5.2	5.4
Alcoholic beverages and tobacco	6.3	6.6	5.8	5.3	5.1
Clothing and footwear	6.1	5.6	4.6	5.0	5.0
Health	2.1	2.9	3.8	4.5	4.6
Communications	1.1	1.4	3.1	2.2	2.2
Education	0.2	0.3	0.5	0.5	0.4
Miscellaneous goods and services	7.3	9.9	9.6	9.2	9.2
<b>Total consumption expenditure</b>	<b>100</b>	<b>100</b>	<b>100</b>	<b>100</b>	<b>100</b>

### Consumption of selected commodities

Per person	Unit	1980	1990	2000	2009	*2010
Milk products	kg	263.0	222.9	193.9	183.9	183.4
Butter	kg	11.7	5.5	3.8	3.0	2.9
Margarine	kg	7.9	7.6	7.7	..	..
Cheese	kg	6.6	12.7	16.5	18.7	19.1
Wheat	kg	44.7	43.5	45.9	48.2	46.5
Rye	kg	20.8	17.4	15.3	15.5	16.1
Potatoes	kg	59.8	59.5	61.6	..	..
Fresh vegetables	kg	21.1	41.5	52.8	59.1	56.2
Fresh fruits	kg	49.8	51.0	45.2	46.4	47.6
Meat	kg	58.9	64.1	68.3	73.3	75.2
Coffee <sup>1)</sup>	kg	10.3	10.2	8.7	8.9	8.3
Sugar	kg	36.8	33.5	32.0	32.6	31.8
Tobacco	kg	1.2	1.1	<sup>2)</sup> 0.9	<sup>2)</sup> 0.5	<sup>2) 3)</sup> 0.6
Alcoholic bev., 100%	l	6.3	7.7	7.0	8.3	<sup>3)</sup> 8.1

1) Sales of roasted coffee – 2) Incl. untaxable consumption – 3) Final data

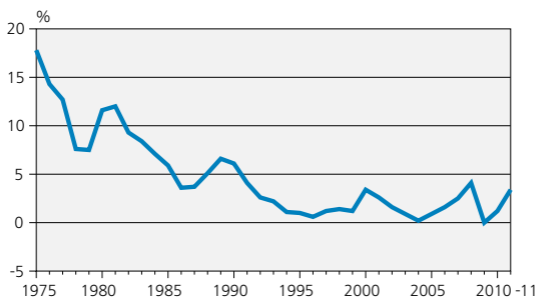
## Prices and Costs

### Consumer price index

	2005 = 100		2010 = 100	
	2010	2011	2010	2011
<b>Total index</b>	<b>109.7</b>	<b>113.5</b>	<b>100.0</b>	<b>103.4</b>
Food and non-alcoholic beverages	110.5	116.8	100.0	106.3
Alcoholic beverages and tobacco	121.7	122.7	100.0	100.8
Housing, water, electricity, gas and other fuels	115.5	122.8	100.0	106.3
Transport	106.7	111.0	100.0	103.9
Recreation and culture	103.8	104.1	100.0	99.7

### Inflation

#### Consumer price index: average annual change



### Cost-of-living index

1951:10 = 100	1960	1970	1980	1990	2000	2009	2010	2011
Total index	138	223	651	1 248	1 501	1 730	1 751	1 812

### Producer price indices

2005 = 100	2007	2008	2009	2010	2011
Producer price index	106.3	110.8	103.2	108.3	114.2
Export price index	102.6	103.0	94.2	98.3	103.1
Import price index	108.6	112.2	102.5	109.4	118.2
Basic price index for domestic supply	109.9	116.1	108.7	114.2	121.8
Wholesale price index	109.3	115.4	107.0	113.1	122.6

1949 = 100	1970	1980	1990	2000	2009	2010	2011
Wholesale price index	297	919	1 435	1 700	1 893	2 000	2 169
Production price index	308	932	1 433	1 666	1 756	1 843	1 944
Export price index	343	969	1 392	1 686	1 566	1 633	1 714
Import price index	277	858	1 000	1 335	1 401	1 495	1 616

## Prices and Costs

### Selected mean prices

	Unit	2008 €	2009	2010	2011
Low fat milk	l	0.87	0.89	0.79	0.84
Butter	500 g	2.88	2.29	1.93	2.33
Cheese, Emmenthal	kg	12.12	12.86	12.57	13.13
Eggs	kg	3.00	2.99	3.00	3.25
Potatoes	kg	0.76	0.76	0.68	0.80
Wheat flour	2 kg	1.19	1.21	1.04	1.21
Wheat bread	500 g	1.59	1.60	1.52	1.65
Minced steak	kg	8.70	8.97	8.33	8.74
Beef roast	kg	11.76	12.62	12.10	13.54
Sausage	kg	3.71	3.95	3.85	4.24
Tuna fish, tinned	150 g	1.29	1.33	1.27	1.49
Coffee, packaged	500 g	2.79	2.78	3.06	4.25
Caster sugar	kg	1.02	1.01	0.96	1.00
Oranges	kg	1.54	1.42	1.48	1.46
Petrol 95E	l	1.41	1.29	1.43	1.56

## Social Protection

### Social expenditure by function

	Net expenditure, € million			
	2009	%	2010	%
Sickness and health	13 078	24.9	13 468	24.6
Disability	6 244	11.9	6 419	11.7
Old age	17 989	34.3	19 116	35.0
Survivors	1 666	3.2	1 724	3.2
Family and children	5 687	10.8	5 845	10.7
Unemployment	4 147	7.9	4 370	8.0
Housing	852	1.6	923	1.7
Other social protection	1 234	2.4	1 301	2.4
Administration	1 530	2.9	1 480	2.7
<b>Total of social expenditure</b>	<b>52 427</b>	<b>100</b>	<b>54 645</b>	<b>100</b>
<b>As % of GDP</b>	<b>30.4</b>		<b>30.4</b>	

### Pension beneficiaries

Pension category	2008	2009	2010	2011
Old-age pension	1 005 277	1 048 379	1 093 267	1 134 942
Unemployment pension	50 770	46 602	33 938	23 017
Disability pension	272 878	272 326	267 248	260 453
Part-time pension	29 140	27 887	28 764	27 521
Special pensions for farmers	27 850	26 298	24 330	22 152
Surviving spouse's pension	263 512	263 818	263 176	262 692
Orphan's pension	23 893	23 344	22 503	21 808
<b>Total <sup>1)</sup></b>	<b>1 414 200</b>	<b>1 443 189</b>	<b>1 463 835</b>	<b>1 483 041</b>

The average total pension of the pension recipients in 2011 was €1 415 per month, €1 610 for men and €1 258 for women.

1) The same individual may be the beneficiary of more than one type of pension

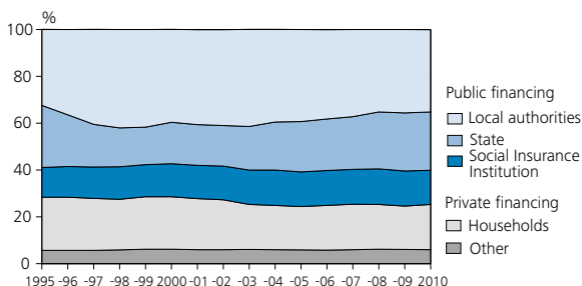
## Health and medical care

	2007	2008	2009	2010	2011
Pharmacies	610	613	617	618	620
Head dispensers	2 337	2 399	2 417	2 473	2 532
Pharmacists	6 392	6 446	6 493	6 588	6 684
Physicians	18 843	19 114	19 500	20 306	20 734
Persons per physician	281	278	274	264	260
Nurses	66 239	67 282	68 392	69 817	71 170
Practical nurses for social and health care	68 902	74 652	80 489	87 006	93 946
Dentists	4 540	4 718	4 731	4 699	4 878

## Causes of death, 2010

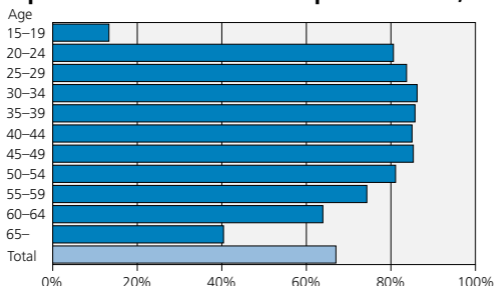
Cause of death	Deaths total	%	Men	%	Women	%
Cardiovascular diseases	20 475	40	9 900	39	10 575	42
Tumours	11 879	23	6 239	24	5 640	22
Dementia, Alzheimers disease	6 057	12	1 890	7	4 167	16
Respiratory diseases	1 988	4	1 221	5	767	3
Alcohol related diseases and accid. poisoning by alcohol	1 962	4	1 536	6	426	2
Gastrointestinal diseases	1 270	2	571	2	699	3
Other diseases	3 578	7	1 694	7	1 884	7
Accidents and violence	3 594	7	2 430	10	1 164	5
– suicides	954	2	718	3	236	1
No death certificate	107	0	66	0	41	0
<b>Total</b>	<b>50 910</b>	<b>100</b>	<b>25 547</b>	<b>100</b>	<b>25 363</b>	<b>100</b>

## Health care expenditure by source of finance



Total health care expenditure amounted to €16 017 million in 2010.

### Population with educational qualification <sup>1)</sup>, 2010



1) Population by age group with a qualification from upper secondary schools, vocational schools and colleges, polytechnics or universities

### Students in education leading to qualifications and qualifications attained

Students	2008	2009	2010
Basic comprehensive school education, compulsory education	561 061	553 329	546 423
Basic adult education <sup>1)</sup>	2 463	2 326	2 361
Upper secondary general school educ. <sup>2)</sup>	114 240	112 088	111 778
Vocational and professional education <sup>3)</sup>	275 498	281 572	279 863
Polytechnic education <sup>4)</sup>	132 501	135 033	138 852
University education <sup>5)</sup>	164 068	168 475	169 404
<b>Total</b>	<b>1 249 831</b>	<b>1 252 823</b>	<b>1 248 681</b>

#### Qualifications achieved

Leaving certificates from comprehensive school, compulsory education	66 810	65 083	64 957
Leaving certificates from comprehensive school, adult education	221	336	373
Upper secondary general school qualifications <sup>6)</sup>	32 963	33 034	32 697
Vocational and professional qualifications	62 498	66 427	67 056
Polytechnic degrees <sup>7)</sup>	21 812	21 039	21 899
University degrees <sup>8)</sup>	38 211	23 831	29 118
<b>Total</b>	<b>222 515</b>	<b>209 750</b>	<b>216 100</b>

1) Includes full syllabus students in comprehensive education

2) Incl. full syllabus or a corresp. syllabus students in upper secondary general school educ.

3) Data on education preparing for a skills examination and on apprenticeship training relate to a calendar year. The data on school type syllabus-based vocational education describe the situation on 20 September.

4) Includes permanent and experimental polytechnics

5) The data are from 20 September. From 2010 onwards, the data also include the National Defence University.

6) Includes matriculation examinations, IB, Reifepfung and Gymnasieexamen examinations

7) Includes second-cycle polytechnic degrees

8) A record number of degrees were completed in university education in 2008 as a consequence of the degree reform

## Research and development expenditure

	2007	2008	2009	2010	<sup>1)</sup> 2011
	€ million				
Business enterprises	4 513	5 102	4 847	4 855	4 954
Public sector <sup>2)</sup>	565	589	657	692	695
University sector <sup>3)</sup>	1 165	1 181	1 283	1 425	1 504
<b>Total</b>	<b>6 243</b>	<b>6 871</b>	<b>6 787</b>	<b>6 971</b>	<b>7 152</b>
as % of GDP	3.5	*3.7	*3.9	*3.9	*3.7
	%				
Business enterprises	72.3	74.3	71.4	69.6	69.3
Public sector <sup>2)</sup>	9.0	8.6	9.7	9.9	9.7
University sector <sup>3)</sup>	18.7	17.2	18.9	20.4	21.0
<b>Total</b>	<b>100</b>	<b>100</b>	<b>100</b>	<b>100</b>	<b>100</b>

1) Estimate based on survey responses and other calculations

2) Incl. private non-profit sector

3) Incl. central university hospitals and polytechnics

## Communications

	Unit	2007	2008	2009	2010
Fixed telephone subscriptions	1 000	1 750	1 655	1 430	1 250
Mobile telephone subscriptions	1 000	6 069	6 901	7 700	8 390
Broadband subscriptions	1 000	1 733	2 084	2 474	3 196
Fixed telephone subscriptions	no./1 000 inh.	330	311	267	233
Mobile telephone subscriptions	no./1 000 inh.	1 145	1 296	1 439	1 561
Broadband subscriptions	no./1 000 inh.	327	391	462	595
Outgoing calls from fixed local networks	million	1 042	898	692	580
Outgoing mobile phone calls	million	4 778	4 915	4 986	5 136
Text messages	million	3 182	3 567	3 800	4 003

## Frequency of information technology equipment in households

Device	2006	2007	2008	2009	2010	2011
	% of households					
Widescreen or flat screen TV <sup>1)</sup>	34	40	48	57	56	63
IPTV	..	..	..	3	4	6
Digital camera	51	58	64	67	68	71
PC	71	76	79	82	84	87
Portable PC	29	37	46	58	64	71
Printer or scanner	53	57	57	57	58	58
Broadband connection	55	63	68	72	75	78
Mobile broadband	..	..	..	20	29	40
Wireless Local Area Network (WLAN)	..	..	..	31	34	37
Computer as a television	..	..	..	16	18	15
Mobile Internet phone (WAP/GPRS/3G)	43	48	51	52	55	..
Smartphone	..	..	..	..	..	33
GPS mobile phone	..	..	..	23	32	43
GPS tracking device in car	4	9	14	23	27	30

1) As from the year 2010 only flat screen TV

## Culture and the Media

### Public libraries <sup>1)</sup>

	Unit	2008	2009	2010	2011
Libraries	number	888	863	842	836
Collections	1 000	40 508	40 056	39 655	39 311
Loans	1 000	99 777	98 785	96 228	97 448
Borrowers	1 000	2 179	2 136	2 089	2 095

1) Excl. Åland

### Books published in Finland

	2007	2008	2009	2010
<b>Total of books published</b>	<b>14 154</b>	<b>13 419</b>	<b>12 714</b>	<b>12 017</b>
Books in national languages				
Non-fiction	7 754	7 256	6 535	5 904
Fiction	1 516	1 541	1 600	1 705
Translations				
Into Finnish	2 341	2 262	2 314	2 432
Into Swedish	113	83	95	112

### Newspapers and periodicals

	2007	2008	2009	2010
<b>Newspapers</b>				
Dailies (7–4 times a week)	53	51	51	49
Non-dailies (3–1 times a week)	151	150	150	130
<b>Total</b>	<b>204</b>	<b>201</b>	<b>201</b>	<b>179</b>
Circulation, 1 000	3 156	3 066	2 960	2 886
<b>Periodicals <sup>1)</sup></b>	<b>3 366</b>	<b>3 313</b>	<b>3 156</b>	<b>3 056</b>

1) Issued at least 4 times a year

### Largest newspapers

	2008	2009	2010	2011
	<b>Circulation</b>			
Helsingin Sanomat, Helsinki	412 421	397 838	383 361	365 994
Iltä-Sanomat, Helsinki	161 615	152 948	150 351	143 321
Aamulehti, Tampere	139 130	135 293	131 539	130 081
Turun Sanomat, Turku	111 845	109 504	107 199	103 314
Iltalehti, Helsinki	122 548	112 778	107 052	102 124
Kaleva, Oulu	81 716	80 826	78 216	74 787
Kaupparehti, Helsinki	86 654	78 731	70 118	68 252
Keskisuomalainen, Jyväskylä	73 559	71 777	68 880	68 101
Savon Sanomat, Kuopio	65 056	64 113	61 546	61 666
<b>In Swedish:</b>				
Hufvudstadsbladet, Helsinki	51 162	49 944	48 046	46 395

## Culture and the Media

### Cinemas

	2006	2007	2008	2009	2010
Cinema halls	330	316	320	306	289
Seats, 1 000	56	56	55	52	50
Premieres	181	163	169	174	186
Visits per inhabitant	1.3	1.2	1.3	1.3	1.4

## Justice

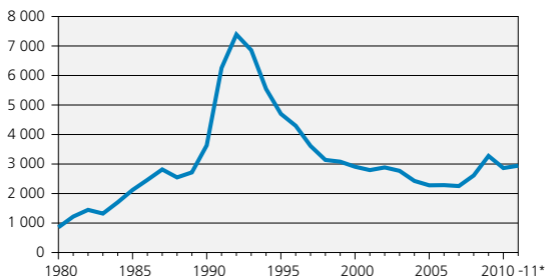
### Criminality <sup>1)</sup>

	2008	2009	2010	2011
All offences <sup>2)</sup>	440 711	441 416	431 623	458 251
Manslaughter, murder, homicide	132	114	110	114
Attempted manslaughter, murder or homicide	363	366	308	306
Assault	34 803	32 895	33 082	40 171
Rape	915	660	818	1 039
Theft	146 493	151 678	148 213	151 243
Robbery	1 696	1 640	1 508	1 622
Damage to property	56 566	50 709	49 160	54 970
Fraud, embezzlement	19 488	20 604	19 163	21 023
Drunken driving	25 819	23 350	21 130	21 459
Offences involving narcotics	15 482	18 524	19 724	20 394
Alcohol-related offences and infractions	3 081	2 987	4 053	5 121
Endangering of traffic safety, traffic infraction	435 466	488 867	503 986	504 578

1) Offences recorded by the police, from 2009 onwards incl. also offences recorded by the Finnish Customs and the Finnish Border Guard

2) Excl. endangering of traffic safety, traffic infraction

### Bankruptcy petitions



## Parliamentary elections 2011

Party	Votes	%	Change from 2007 % points	Seats 2011	2007
KOK	599 138	20.4	-1.9	44	50
SDP	561 558	19.1	-2.3	42	45
PS	560 075	19.1	15.0	39	5
KESK	463 266	15.8	-7.4	35	51
LEFT	239 039	8.1	-0.7	14	17
Green League	213 172	7.3	-1.2	10	15
RKP	125 785	4.3	-0.3	9	9
KD	118 453	4.0	-0.8	6	7
Other parties	47 322	1.6	-0.4	-	-
Others	11 763	0.4	-0.1	1	1
<b>Total</b>	<b>2 939 571</b>	<b>100</b>		<b>200</b>	<b>200</b>
Women	1 230 180	41.8	-0.3	85	84

Voting turnout <sup>1)</sup> 70.5% (67.4% incl. Finns resident abroad)

Explanations: KOK = National Coalition Party, SDP = Social Democratic Party of Finland, PS = True Finns, KESK = Centre Party of Finland, LEFT = Left Alliance, RKP = Swedish People's Party in Finland, KD = Christian Democrats in Finland

1) Finnish citizens resident in Finland

## Presidential election 2012

1st round on 22 Jan. 2012

Candidate	Votes	%
Sauli Niinistö	1 131 254	37.0
Pekka Haavisto	574 275	18.8
Paavo Väyrynen	536 555	17.5
Timo Soini	287 571	9.4
Paavo Lipponen	205 111	6.7
Paavo Arhinmäki	167 663	5.5
Eva Biaudet	82 598	2.7
Sari Essayah	75 744	2.5
<b>Total</b>	<b>3 060 771</b>	<b>100</b>

Voting turnout <sup>1)</sup> 72.8%, (69.7% incl. Finns resident abroad)

2nd round on 5 Feb. 2012

Candidate	Votes	%
Sauli Niinistö	1 802 328	62.6
Pekka Haavisto	1 077 425	37.4
<b>Total</b>	<b>2 879 753</b>	<b>100</b>

Voting turnout <sup>1)</sup> 68.9% (66.0% incl. Finns resident abroad)

Sauli Niinistö was elected President of the Republic in the second round of the elections.

1) Finnish citizens resident in Finland

## Municipal elections 2008 <sup>1)</sup>

Party	Votes	%	Party	Votes	%
KOK	597 727	23.4	RKP	119 896	4.7
SDP	541 187	21.2	KD	106 639	4.2
KESK	512 220	20.1	Other parties	20 919	0.8
Green League	227 999	8.9	Others	61 478	2.4
LEFT	223 673	8.8	<b>Total</b>	<b>2 549 235</b>	<b>100</b>
PS	137 497	5.4	Women	1 069 763	42.0

Voting turnout 61.2%

See explanations above.

1) The results of the re-elections held in Karkkila, Kauniainen and Vihti on 6 September 2009 are included in the data

## Elections

### European Parliament elections 2009

Party	Votes	%	Change in votes cast 2009–2004 % points	Number of Euro-MPs elected
KOK	386 416	23.2	-0.5	3
KESK	316 798	19.0	-4.3	3
SDP	292 051	17.5	-3.6	2
Green League	206 439	12.4	2.0	2
PS	162 930	9.8	9.2	1
RKP	101 453	6.1	0.4	1
KD	69 458	4.2	-0.1	1
Others	129 286	7.8	-3.0	-
<b>Total</b>	<b>1 664 831</b>	<b>100</b>		<b>13</b>
Women	774 457	46.5	1.6	8

Voting turnout 40.3% (resident in Finland)

See page 37 for explanations.

## Foreign Countries

### General government deficit/surplus and debt

EU Member State (2011)	Deficit (-) / surplus (+), as % of GDP			Debt, as % of GDP		
	2009	2010	2011	2009	2010	2011
Austria	-4.1	-4.5	-2.6	69.5	71.9	72.2
Belgium	-5.6	-3.8	-3.7	95.8	96.0	98.0
Bulgaria	-4.3	-3.1	-2.1	14.6	16.3	16.3
Cyprus	-6.1	-5.3	-6.3	58.5	61.5	71.6
Czech Republic	-5.8	-4.8	-3.1	34.4	38.1	41.2
Denmark	-2.7	-2.5	-1.8	40.6	42.9	46.5
Estonia	-2.0	0.2	1.0	7.2	6.7	6.0
Finland	-2.5	-2.5	-0.5	43.5	48.4	48.6
France	-7.5	-7.1	-5.2	79.2	82.3	85.8
Germany	-3.2	-4.3	-1.0	74.4	83.0	81.2
Greece	-15.6	-10.3	-9.1	129.4	145.0	165.3
Hungary	-4.6	-4.2	4.3	79.8	81.4	80.6
Ireland	-14.0	-31.2	-13.1	65.1	92.5	108.2
Italy	-5.4	-4.6	-3.9	116.0	118.6	120.1
Latvia	-9.8	-8.2	-3.5	36.7	44.7	42.6
Lithuania	-9.4	-7.2	-5.5	29.4	38.0	38.5
Luxembourg	-0.8	-0.9	-0.6	14.8	19.1	18.2
Malta	-3.8	-3.7	-2.7	68.1	69.4	72.0
Netherlands	-5.6	-5.1	-4.7	60.8	62.9	65.2
Poland	-7.4	-7.8	-5.1	50.9	54.8	56.3
Portugal	-10.2	-9.8	-4.2	83.1	93.3	107.8
Romania	-9.0	-6.8	-5.2	23.6	30.5	33.3
Slovakia	-8.0	-7.7	-4.8	35.6	41.1	43.3
Slovenia	-6.1	-6.0	-6.4	35.3	38.8	47.6
Spain	-11.2	-9.3	-8.5	53.9	61.2	68.5
Sweden	-0.7	0.3	0.3	42.6	39.4	38.4
United Kingdom	-11.5	-10.2	-8.3	69.6	79.6	85.7

## Foreign Countries

### Comparative international data

	Area	Population	Population growth	Life expectancy,
	1 000 km <sup>2</sup>	Million	%/year	years
	2010	2010	2010–2015	2012
Finland	338	5.4	0.3	79
Sweden	450	9.4	0.6	81
Norway	324	4.9	0.7	80
Denmark	43	5.5	0.3	79
Iceland	103	0.3	1.2	81
Argentina	2 780	40.5	0.9	77
Australia	7 692	22.3	1.3	82
Austria	84	8.4	0.2	80
Belgium	31	10.9	0.3	80
Brazil	8 515	193.3	0.8	73
Canada	9 985	34.1	0.9	81
Chile	756	17.1	0.9	78
China	9 597	<sup>1)</sup> 1 334.7	0.4	75
Czech Republic	79	10.5	0.3	77
Egypt	1 002	78.7	1.7	73
Estonia	45	1.3	-0.1	74
France	552	63.0	0.5	81
Germany	357	81.8	-0.2	80
Greece	132	11.3	0.2	80
Hungary	93	10.0	-0.2	75
India	3 287	1 182.1	1.3	67
Indonesia	1 911	<sup>1)</sup> 234.4	1.0	72
Ireland	70	4.5	1.1	80
Israel	22	7.6	1.7	81
Italy	301	60.5	0.2	82
Japan	378	127.5	-0.1	84
Latvia	65	2.2	-0.4	73
Lithuania	65	3.3	-0.4	76
Luxembourg	3	0.5	1.4	80
Mexico	1 964	<sup>1)</sup> 107.6	1.1	77
Netherlands	37	16.6	0.3	81
New Zealand	270	4.4	1.0	81
Nigeria	924	<sup>2)</sup> 140.0	2.5	52
Pakistan	796	<sup>1)</sup> 165.2	1.8	66
Poland	313	38.2	0.0	76
Portugal	92	10.6	0.0	79
Russia	17 098	142.9	-0.1	66
South Africa	1 221	50.0	0.5	49
Spain	506	46.1	0.6	81
Switzerland	41	7.8	0.4	81
Turkey	784	73.1	1.1	73
Ukraine	604	46.0	-0.5	69
United Kingdom	243	62.2	0.6	80
United States	9 629	309.1	0.9	78

1) 2009 – 2) 2006

## Foreign Countries

### Comparative international data

	GNP per capita		Unem- ployment % 2010	Inflation % 2010
	USD 2010	Purchasing power parity, USD 2010		
Finland	47 720	37 290	8.4	1.2
Sweden	50 110	39 730	8.4	1.2
Norway	84 290	56 830	3.5	2.4
Denmark	59 050	40 230	7.4	2.3
Iceland	32 710	27 680	7.6	5.4
Argentina	8 620	15 570	7.7	10.5
Australia	<sup>1)</sup> 43 590	<sup>1)</sup> 38 380	5.2	2.8
Austria	47 060	39 790	4.4	1.8
Belgium	45 910	38 260	8.3	2.2
Brazil	9 390	11 000	6.7	5.0
Canada	43 270	38 310	8.0	1.8
Chile	10 120	14 590	8.1	1.4
China	4 270	7 640	<sup>2)</sup> 4.2	3.3
Czech Republic	17 890	23 620	7.3	1.5
Egypt	2 420	6 060	9.0	11.7
Estonia	14 460	19 760	16.9	3.0
France	42 390	34 440	9.8	1.5
Germany	43 110	37 950	7.1	1.1
Greece	26 940	27 050	12.5	4.7
Hungary	12 850	19 050	11.2	4.9
India	1 330	3 550	..	12.0
Indonesia	2 500	4 200	7.3	5.1
Ireland	41 000	33 370	13.7	-0.9
Israel	27 170	27 630	6,6	2,7
Italy	35 150	31 130	8.4	1.5
Japan	41 850	34 640	5.1	-0.7
Latvia	11 620	16 350	18.7	-1.2
Lithuania	11 390	17 870	17.8	1.2
Luxembourg	77 160	61 790	4.6	2.3
Mexico	8 890	14 290	5.4	4.2
Netherlands	49 050	41 900	4.5	1.3
New Zealand	<sup>1)</sup> 28 770	<sup>1)</sup> 28 050	6.5	2.3
Nigeria	1 180	2 170	..	13.7
Pakistan	1 050	2 790	<sup>2)</sup> 5.2	11.7
Poland	12 440	19 060	9.6	2.6
Portugal	21 880	24 760	10.8	1.4
Russia	9 900	19 190	7.5	6.9
South Africa	6 090	10 360	24.9	4.1
Spain	31 750	31 640	20.1	1.8
Switzerland	71 530	50 170	4.5	0.7
Turkey	9 890	15 170	11.9	8.6
Ukraine	3 000	6 620	8.1	9.4
United Kingdom	38 370	36 410	7.8	0.3
United States	47 390	47 360	9.6	1.6

1) 2009 – 2) 2008

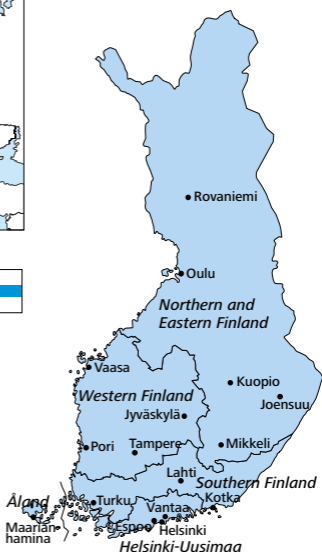


## Major regions (NUTS 2)

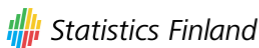
### Suomi Finland



- 1955 Member of the UN
- 1955 Member of the Nordic Council
- 1961 Associate member of the EFTA
- 1969 Member of the OECD
- 1986 Full member of the EFTA
- 1989 Member of the Council of Europe
- 1995 Member of the European Union



Town locations © National Land Survey of Finland 53/MML/11



Information Service,  
Statistics Finland  
tel. +358 9 1734 2220  
[www.stat.fi](http://www.stat.fi)

Publication orders,  
Edita Publishing Oy  
tel. +358 20 450 05  
[www.editapublishing.fi](http://www.editapublishing.fi)

Cover photograph: Fennopress Oy  
Cover design:  
Irene Koumolou, Statistics Finland

Editing and layout:  
Statistics Finland, General publications

Edita Prima Oy, Helsinki 2012

© 2012 Statistics Finland

Quoting is encouraged provided Statistics Finland is acknowledged as the source.

ISSN 2242-8496 (pdf)  
ISBN 978-952-244-379-3 (pdf)  
ISSN 0357-0371 (print)  
ISBN 978-952-244-347-2 (print)  
Product number 3056 (print)